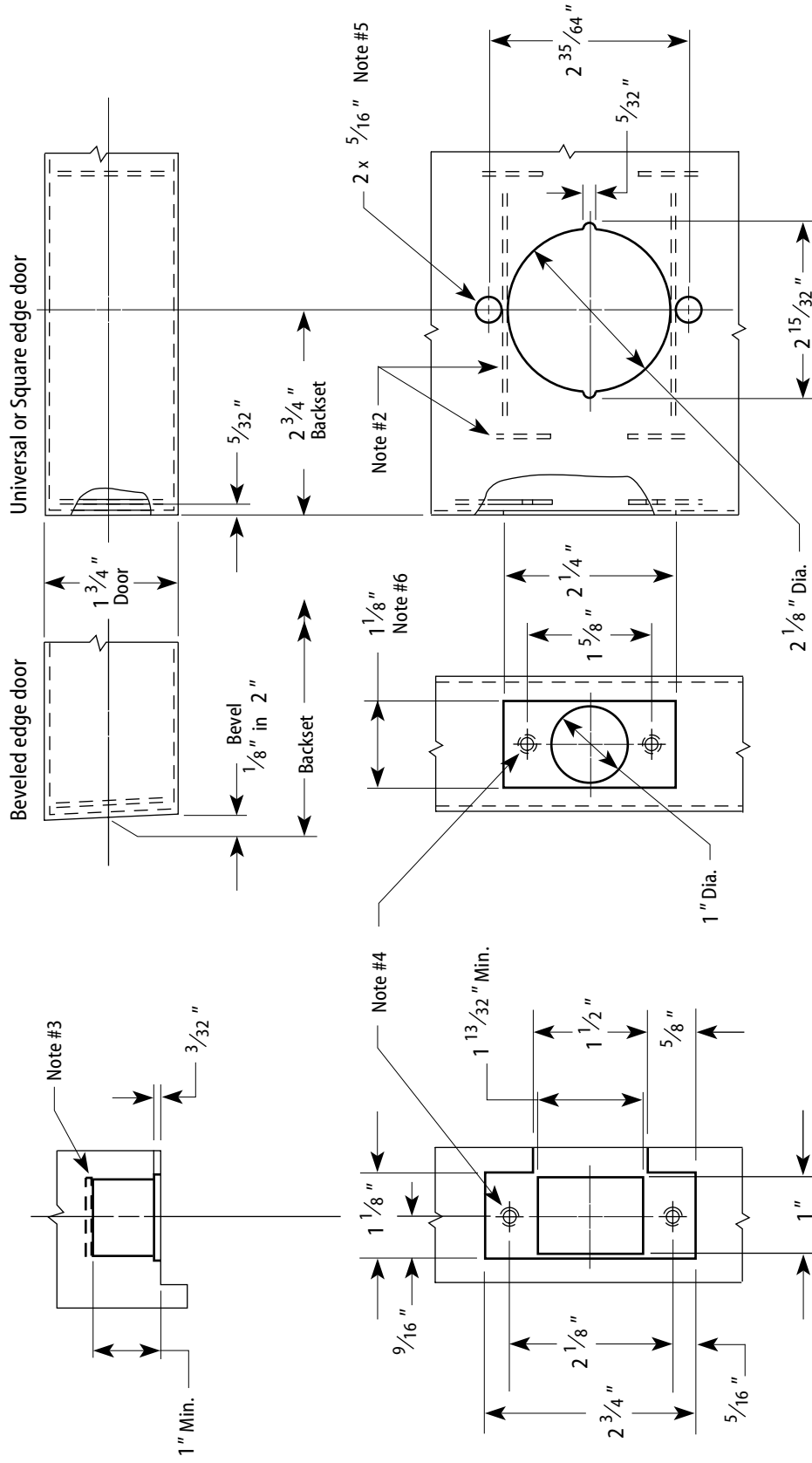


Notes

- 1 Allow plus tolerance for clearance per ANSI A115-2.
- 2 Lock and latch case support by door manufacturer.
- 3 Plaster guard by door manufacturer.
- 4 Prepare for a #8-32 screw.
- 5 For 73KC and 93K only: The 63K and 83K "C" style roses will **not** cover these holes.
- 6 For 63K and 73KC only, a 1" latch face is available.
- 7 For 73KC locks, use the KD303 drill jig to ensure that through-bolts and levers are properly aligned.



Frame Preparation

2 3/4" Backset Door Preparation

| | | | | | | |
|---|-------------------|--------------------------------------|--------------------------|---------------------|-------------------------------|-----------------|
| Title Door & Frame Preparation for 63K, 73KC, 83K, & 93K Cylindrical Locks | | | | | BEST ACCESS SYSTEMS | |
| Series 63K, 73KC, 83K, 93K | Backset 2 3/4" | Strike Small ANSI strike (STK) | Door thickness 1 3/4" | Rev date 11/2002 | Template number K08 | Rev G |