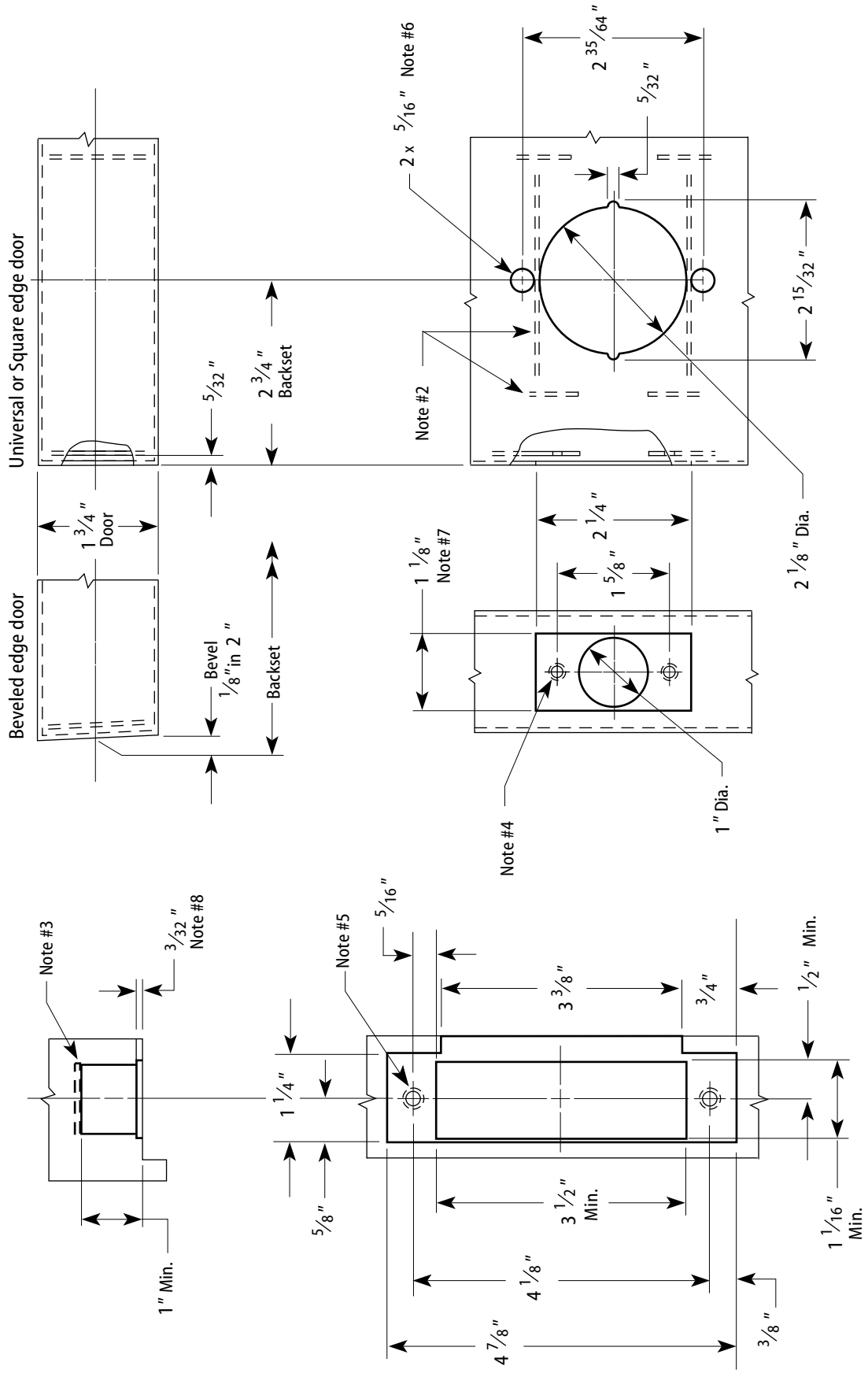


Notes

- 1 Allow plus tolerance for clearance per ANSI A115.2.
- 2 Lock and latch case support by door manufacturer.
- 3 Plaster guard by door manufacturer
- 4 Prepare for a #8-32 screw.
- 5 Prepare for a #12-24 screw.
- 6 For 73KC and 93K only! The 63K and 83K "C" style trim will **not** cover these holes.
- 7 For 63K and 73KC only, a 1" latch face is available.
- 8 When a strike box is used, 9/64".
- 9 For 73KC locks, use the KD303 drill jig to ensure that through-bolts and levers are properly aligned.



Frame Preparation

2 3/4" Backset Door Preparation

Title Door & Frame Preparation for 63K, 73KC, 83K, & 93K Cylindrical Locks		BEST ACCESS SYSTEMS			
Series 63K, 73KC, 83K, 93K	Backset 2 3/4"	Strike Large ANSI strike (S3)	Door thickness 1 3/4"	Rev date 11/2002	Template number K09
					Rev G