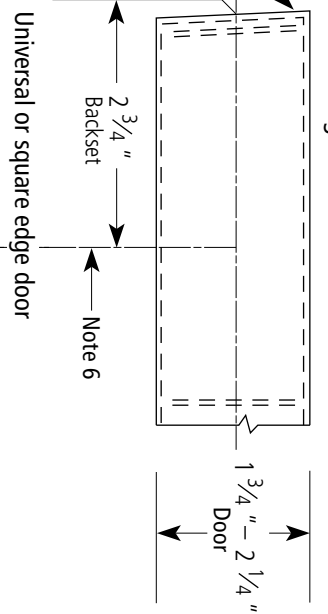


Notes

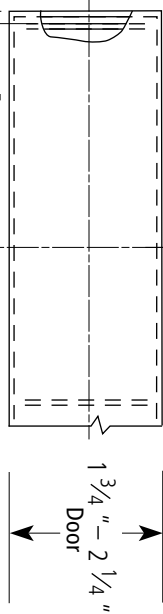
1. Also see the W16 Template—Installation Template for 83KM/93KM Cylindrical Locks.
2. Allow plus tolerance for clearance per ANSI A115.5. The general tolerance is $\pm 1/64"$.
3. The lock and latch case support are required from the door manufacturer.
4. The plaster guard is required from the frame manufacturer.
5. Prepare for a #8–32 screw.
6. For backsets other than $2 1/4"$, position the vertical centerline of the lock appropriately.
7. Drill the 1" hole $1 3/4"$ deep, drill the $3/8"$ hole through the door.
8. Drill the 1" hole 1" deep.

Bevel angle = $1/8"$ in 2"

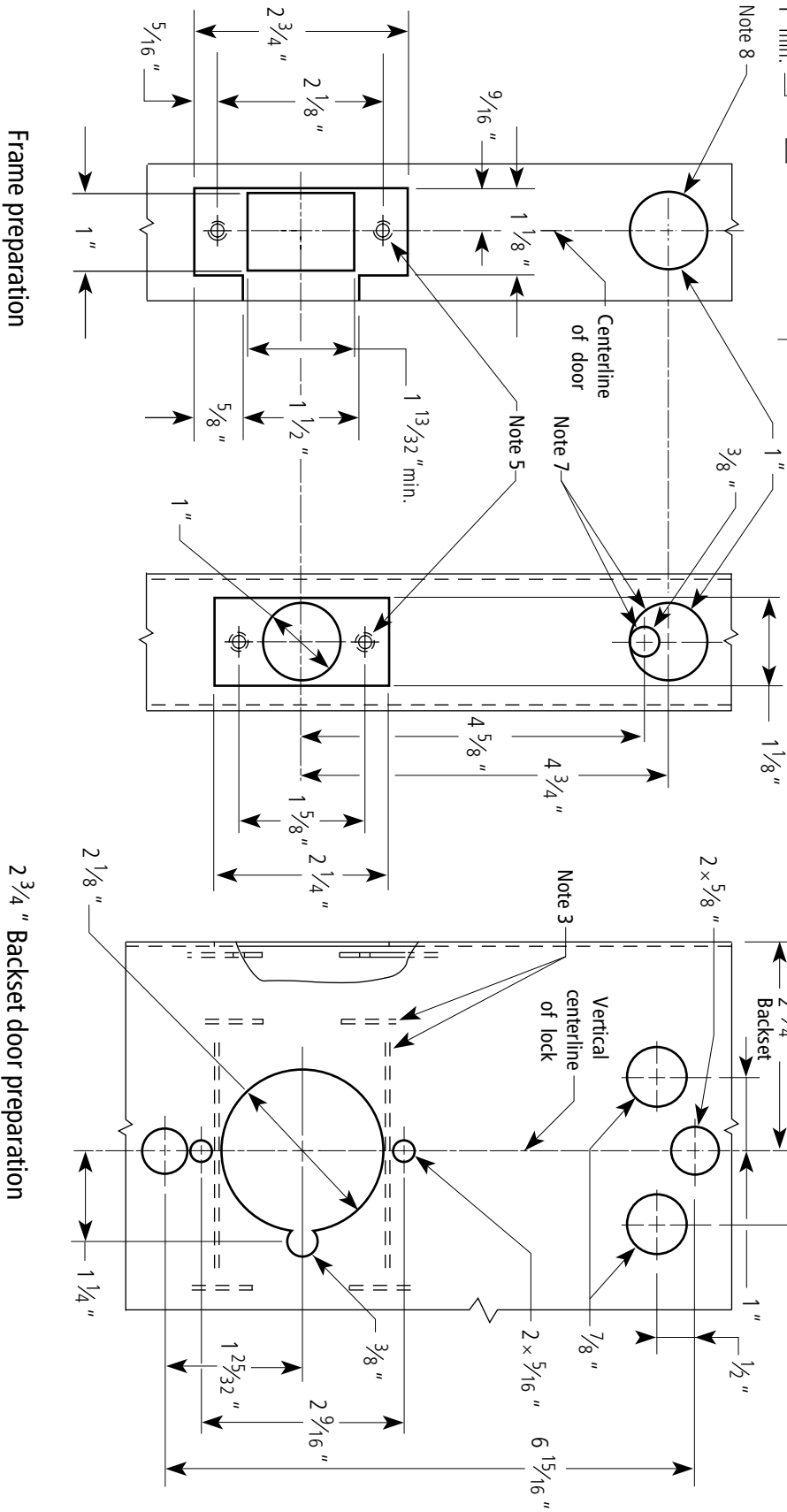
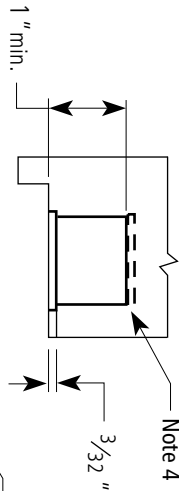
Beveled edge door



Universal or square edge door



Strike box — overhead view



Frame preparation

2 3/4 " Backset door preparation

Title Installation Specifications for 83KM/93KM–85KM/95KM IDH Max Cylindrical Locks with Small Strike			
Series 8KM/9KM	Backset 2 3/4", 3 3/4", 5"	Trim style MS, PH, PM	Door thickness 1 3/4"–2 1/4"

BEST ACCESS SYSTEMS		W13	Rev C
Rev date 09/2014	Template number		