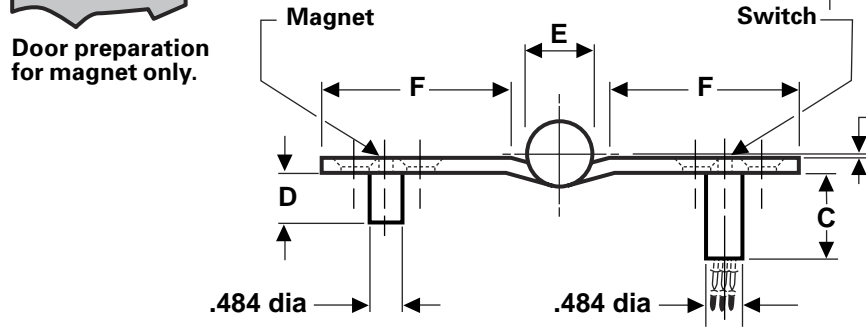
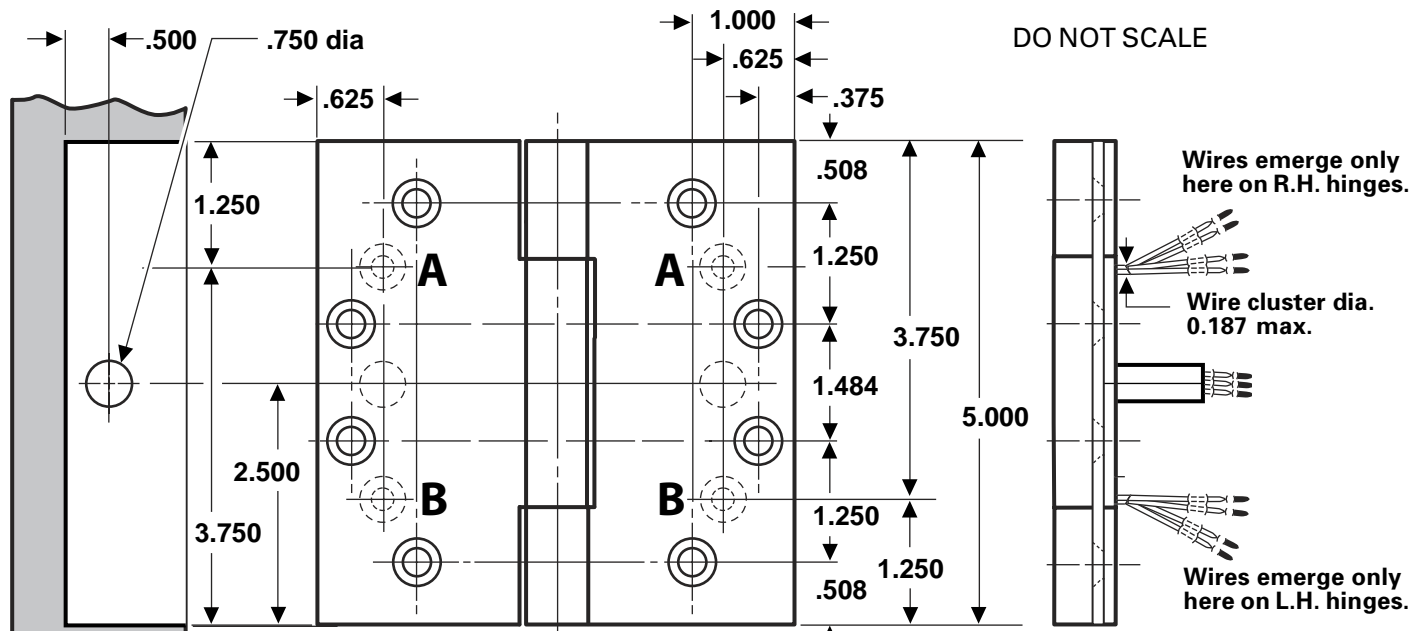


FULL MORTISE TEMPLATE BUTT HINGES WITH CONCEALED WIRES AND CONCEALED SWITCH

Size: 5 × 4½"

A and B holes require a 3/4 hole for through wires.



This view shows CS construction only.

1/32 (1/16 clearance between hinge leaves when parallel.)

Drill a 0.750 inch diameter hole in the hinge reinforcement to allow the wires and connectors (wire nuts) to pass through freely. A larger hole may be required, depending on connector size.

De-burr both faces of the hole and prime to help avoid damaging wire insulation.

Switches mount in jamb leaf. Arrangement for R.H. door shown. Specify the hand of door when ordering.

NOTES:

- 1 Available with four (4) wires (use suffix-54), six (6) wires (use suffix-56) or eight (8) wires (use suffix-58).
- 2 It is suggested that the hinge be mounted in the center or lower position on the door, rather than the top.
- 3 0.750 diameter recommended hole size for switch housing clearance.
- 4 Use a JB-2R Junction Box. See template T90-38R.

CLASS NUMBER		Gauge of Metal	(E) Outside Diameter	DISTANCE FROM EDGE OF LEAF TO SWAGE LINE (F)	C	D
Steel Hinges	Nonferrous Hinges					
CECSCB1900	CECSCB1960	0.146	0.580	1 55/64	1.218	0.859
CECSCB1900R	CECSCB1960R	0.146	0.699	1 13/16	1.218	0.859
CECSCB1901	CECSCB1961	0.190	0.715	1 13/16	1.172	0.812
CECSCB1901R	CECSCB1961R	0.190	0.748	1 22/32	1.172	0.812

Machine Screw Size — ½ × 12-24 F.H.

Wood Screw Size — [1¼ × No. 12 F.H. for standard weight (0.146) hinges
1½ × No. 12 F.H. for heavy weight (0.190) hinges