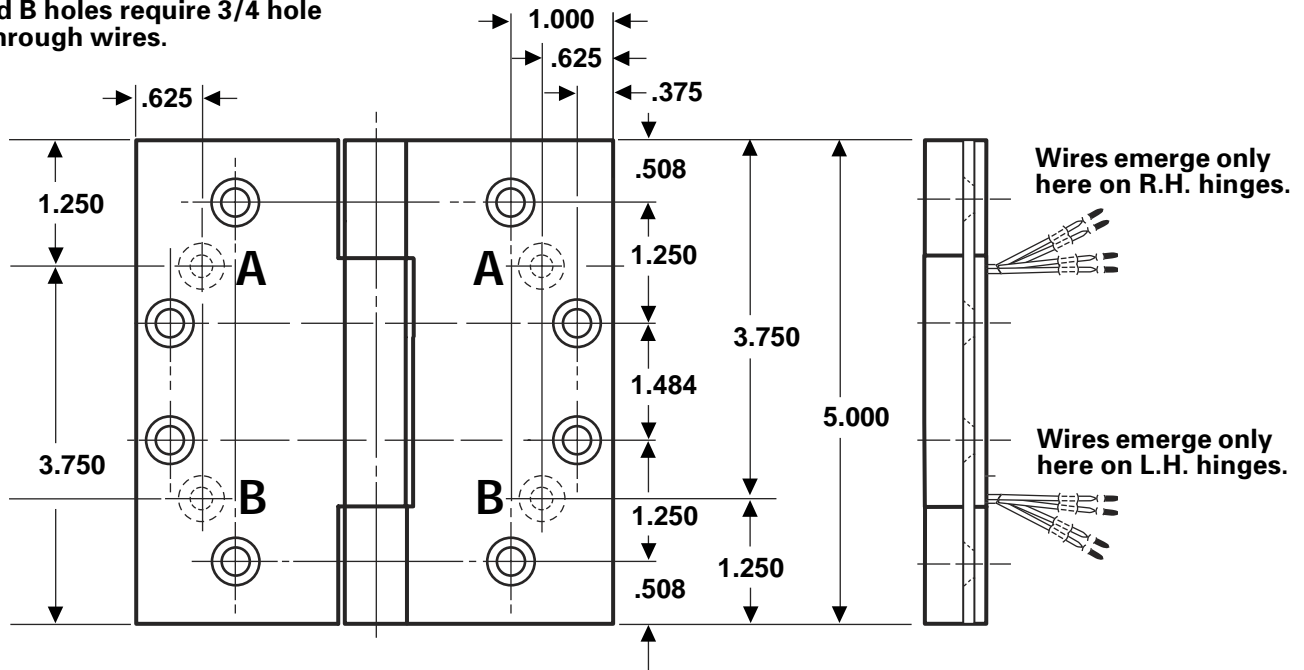


# FULL MORTISE TEMPLATE BUTT HINGES WITH CONCEALED WIRES

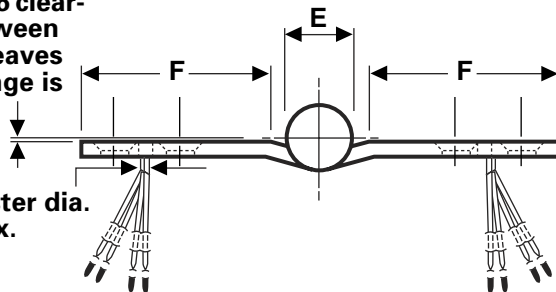
Size: 5 × 4½"

A and B holes require 3/4 hole for through wires.



1/32 (1/16 clearance between parallel leaves when hinge is closed.)

Wire cluster dia. 0.187 max.



DO NOT SCALE

Drill a 0.750 inch diameter hole in the hinge reinforcement to allow the wires and connectors (wire nuts) to pass through freely. A larger hole may be required, depending on connector size.

De-burr both faces of the hole and prime to help avoid damaging wire insulation.

Use a JB-2R Junction Box. See template T90-38R.

**NOTES:**

- 1 Available with four (4) wires (use suffix-54), six (6) wires (use suffix-56), or eight (8) wires (use suffix-58).
- 2 Available with both concealed wires and a concealed switch. See template T50-20.

CLASS NUMBER		Gauge of Metal	(E) Outside Diameter	DISTANCE FROM EDGE OF LEAF TO SWAGE LINE (F)
Steel Hinges	Nonferrous Hinges			5 × 4½
CECB1900	CECB1960	0.146	0.580	1 55/64
CECB1900R	CECB1960R	0.146	0.669	1 13/16
CECB1901	CECB1961	0.190	0.715	1 13/16
CECB1901R	CECB1961R	0.190	0.748	1 23/32
CEIHTCB1901	CEIHTCB1961	0.190	0.715	1 13/16
CEIHTCB1901R	CEIHTCB1961R	0.190	0.748	1 23/32

Machine Screw Size — ½ × 12-24 F.H.

Wood Screw Size — [ 1¼ × No. 12 F.H. for standard weight (0.146) hinges  
1½ × No. 12 F.H. for heavy weight (0.190) hinges

NOTE: Prefix IHT indicates Institutional Hinge.