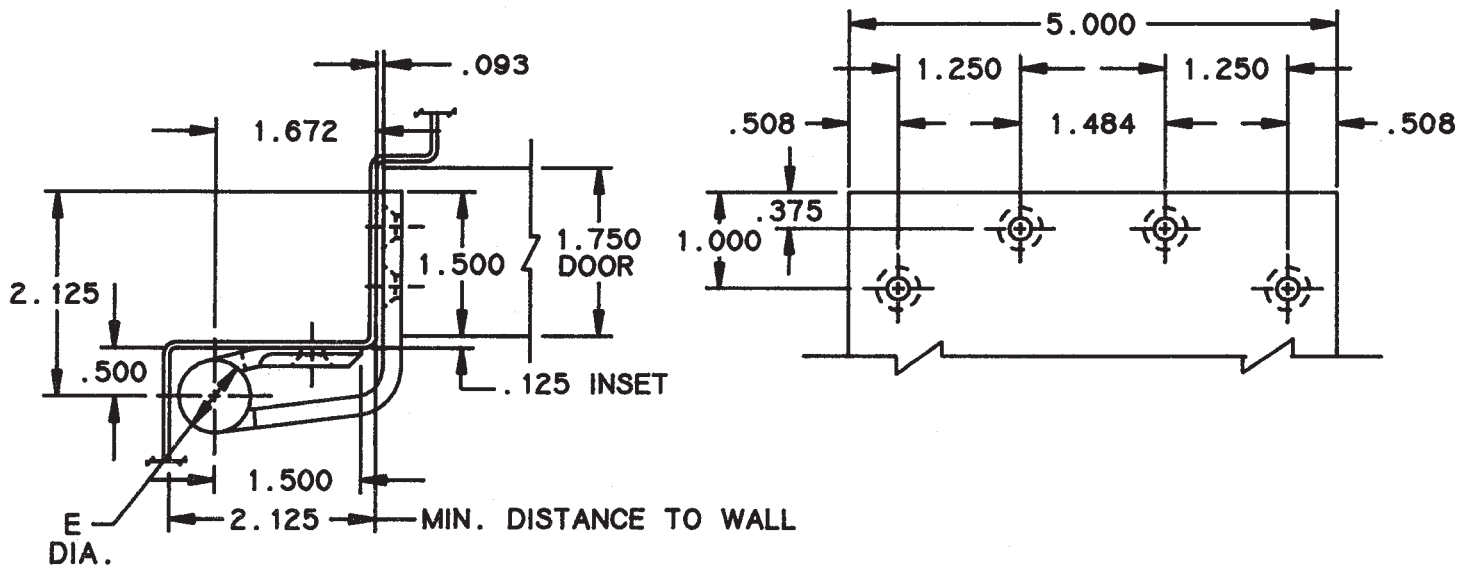
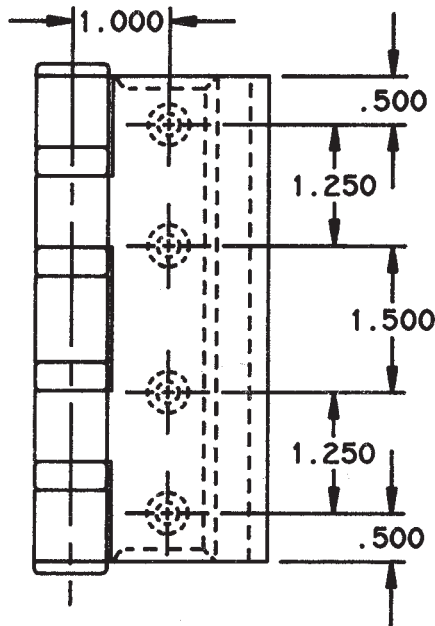


# HALF MORTISE "SWING-CLEAR" TEMPLATE HINGES FOR DOORS WITH SQUARE HINGE STILES

Size: 5"



DO NOT SCALE



NOTES:

- 1 This hinge alters the normal pivot point of the door. For door closers, friction or overhead door holders to be used in conjunction with this hinge, consult manufacturer of the device to be used for application details.
- 2 1¾ doors will clear opening at 95°.
- 3 For doors thicker than 1¾ door backsets should be increased by the amount of the additional door thickness.

Class No.	Material	Gauge of Metal	(E) Outside Diameter
CB264	Steel	0.190	0.748
FBB264	Steel	0.190	0.748
CB1941	Steel	0.190	0.715
CB1941R	Steel	0.190	0.748

Template hinges of the hospital type conform to above screw hole location. Hospital type hinges are designated by prefix "HT" to class number. Hand of hinge may be changed by inverting hinge and reversing pin and tip.

Machine Screw Size — Jamb Leaf — ½ × 12-24 F.H.

Door Leaf — ½ × 12-24 F.H. or 1¼ × No. 12 F.H. WD. SCR.