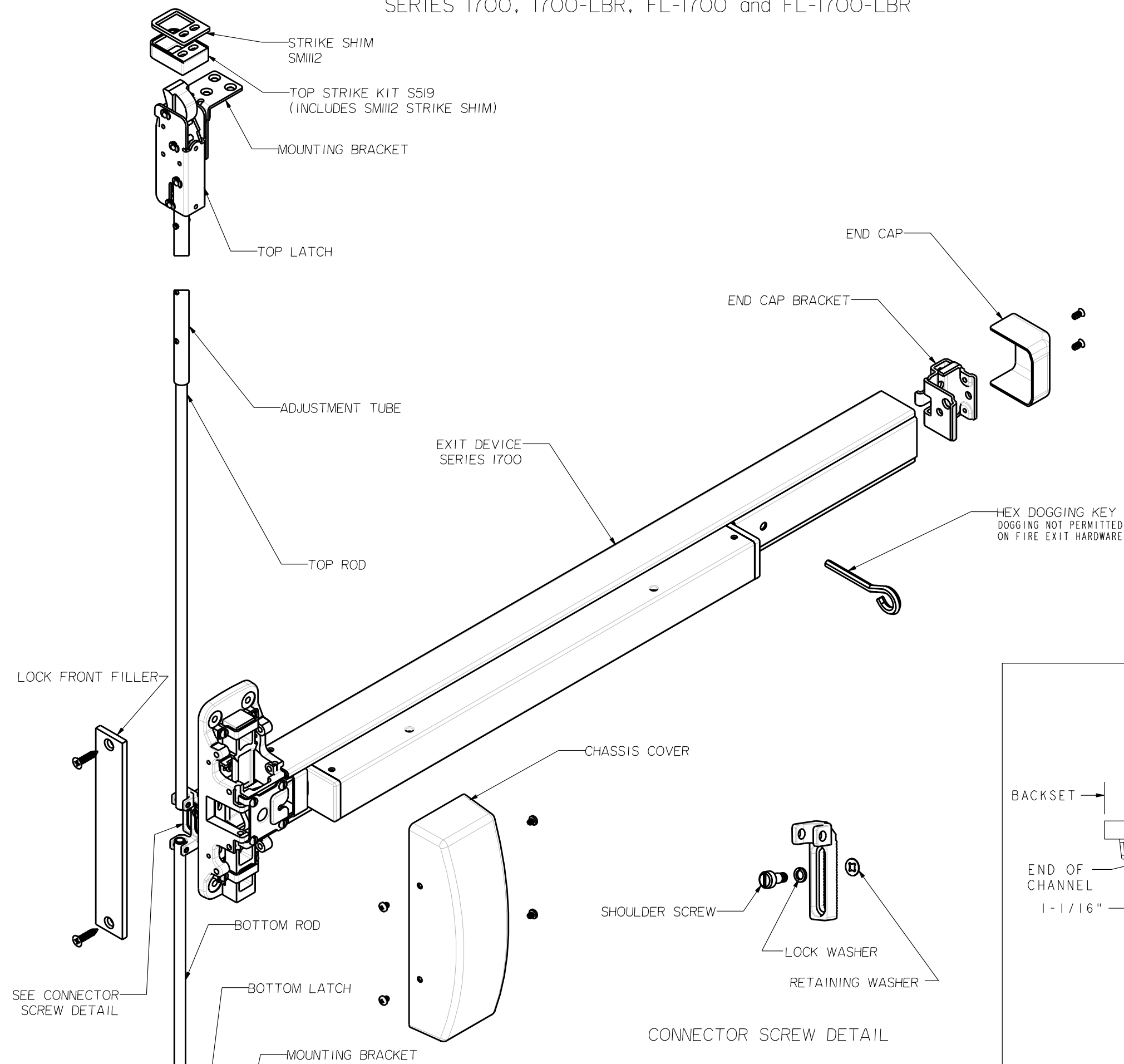


INSTALLATION INSTRUCTIONS

REVERSIBLE - CONCEALED VERTICAL ROD DEVICES
 SERIES 1700, 1700-LBR, FL-1700 and FL-1700-LBR



LATCH ADJUSTMENT

IF REQUIRED

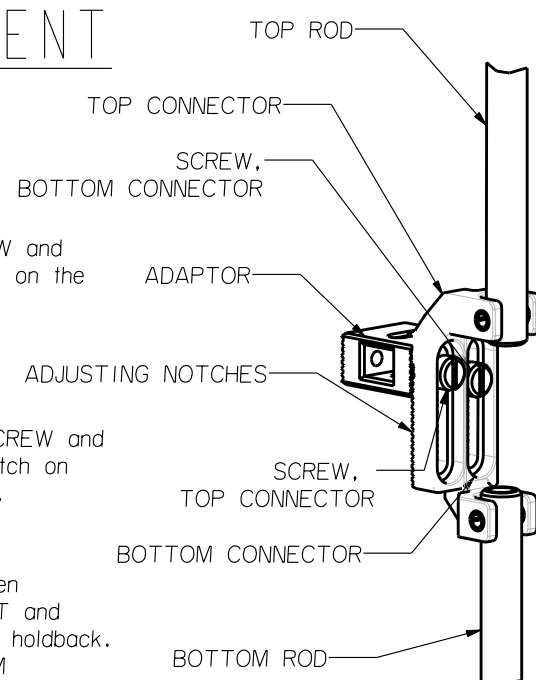
1. Holdback is properly adjusted when the latches will stay retracted after depressing and releasing the touch bar.

If no Holdback: loosen TOP CONNECTOR SCREW and move the TOP CONNECTOR up 1/16" (one notch on the Adapter) and retighten. Recheck holdback.

2. Deadlocking is properly adjusted when you cannot push down the extended latch bolt.

If no deadlocking: loosen TOP CONNECTOR SCREW and move the TOP CONNECTOR down 1/16" (one notch on the Adapter) and retighten. Recheck deadlocking.

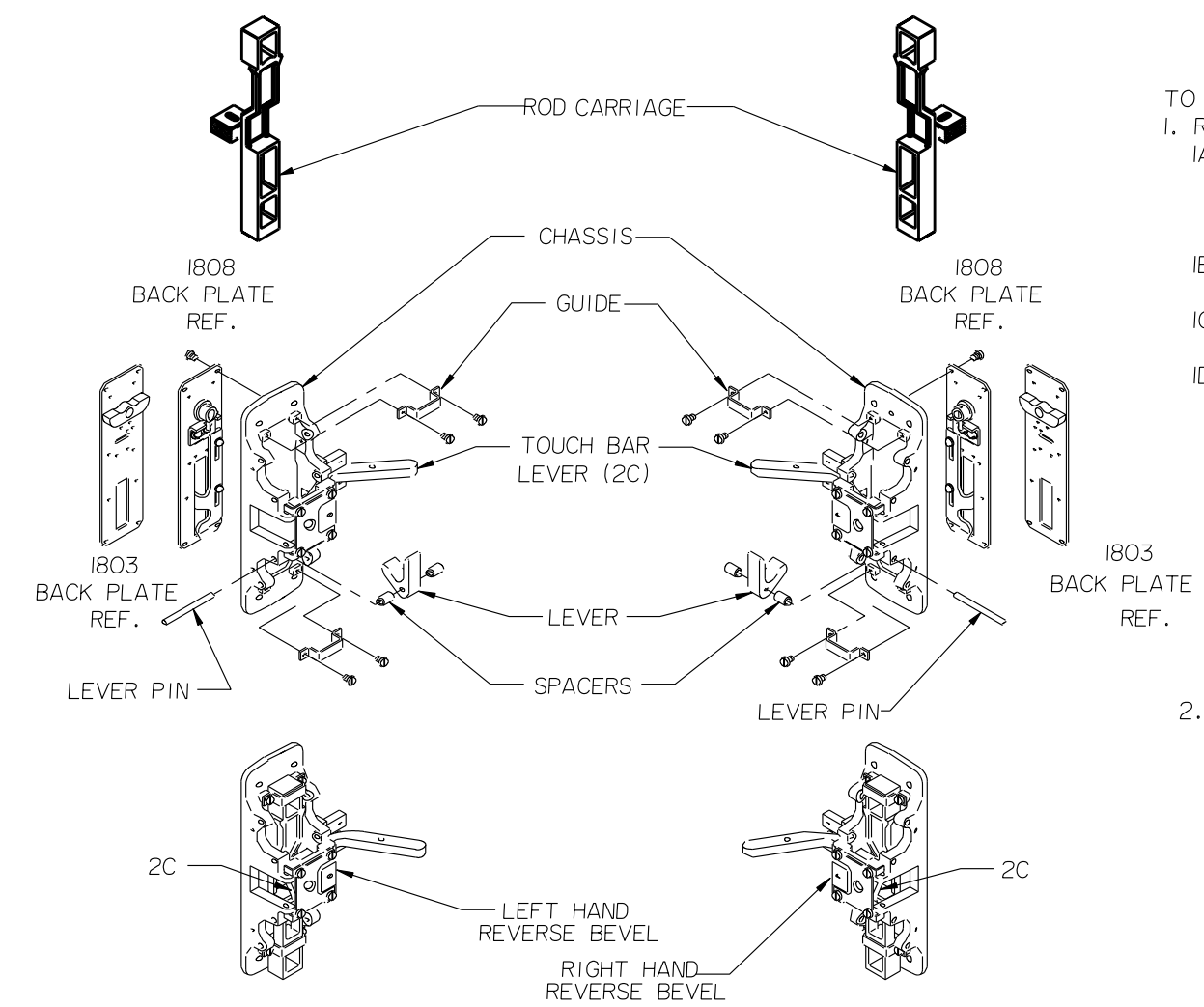
3. The BOTTOM BOLT is properly adjusted when there is 1/8" clearance, between BOTTOM BOLT and the BOTTOM STRIKE, when the latch bolt is in holdback. TO adjust BOTTOM BOLT: loosen The BOTTOM CONNECTOR SCREW and move the BOTTOM CONNECTOR in the proper direction and retighten. Recheck adjustment.



BOTTOM STRIKE
 020-97

LHRB Shown
 (RHRB Opposite)

INSTRUCTIONS TO CHANGE HAND

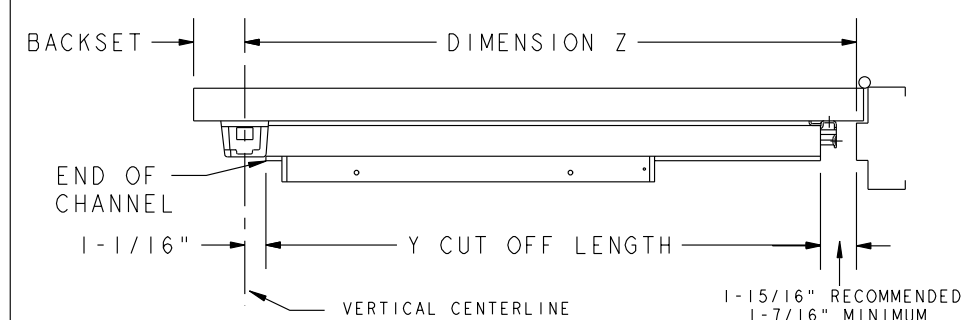


- TO CHANGE DEVICE HANDING:
1. Remove Chassis Parts:
 - IA. FOR DEVICES WITH OUTSIDE FUNCTIONS ONLY. Remove Back Plate Assembly by removing 4 screws and rotating 90°.
 - IB. Remove guides by removing the 4 screws.
 - IC. Slide lever pin out and remove lever and spacers.
 - ID. Remove Rod Carriage.

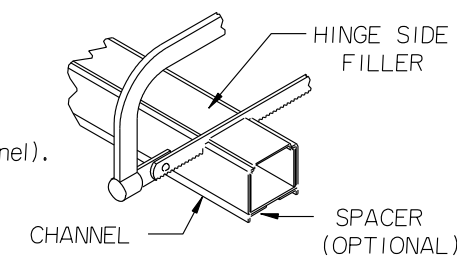
2. Reinstall Chassis Parts:
 - 2A. Rotate Chassis 180°
 - 2B. Insert Rod Carriage
 - 2C. Assemble Lever and Spacers. (lever must be on the top of the Touch Bar Lever)
 - 2D. Attach guides with 4 screws.
 - 2E. FOR DEVICES WITH OUTSIDE FUNCTIONS ONLY - Attach Back Plate Assembly by rotating 90° and secure with 4 screws.

CUT DEVICE

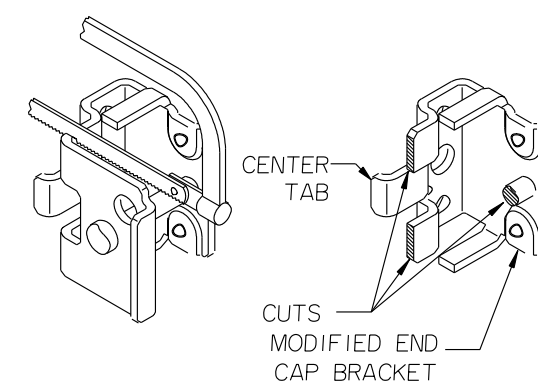
IF REQUIRED



1. Determine cut off length "y" by subtracting 3" from dimension "z".
2. Mark cut off point (hinge side filler must be all the way inside of channel).
3. Cut off channel, hinge side filler, spacer (if specified) and deburr.

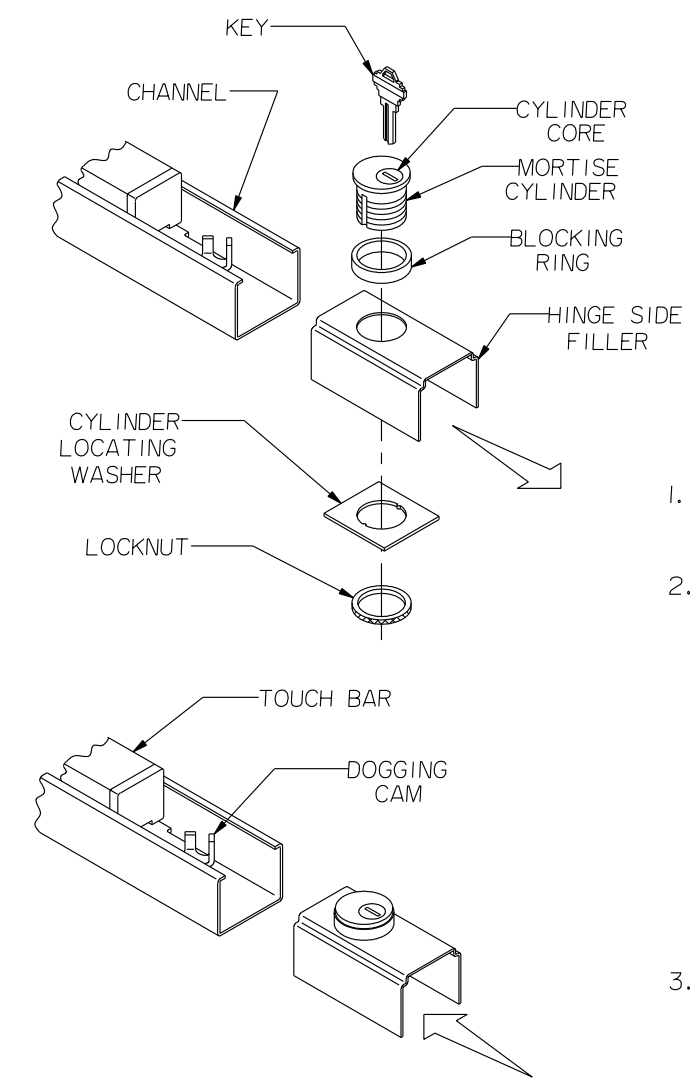


NOTE: When preparing a device for a 2' 6" door the end cap bracket must be modified. Cut the bracket through the three specified locations. (see illustration) DO NOT cut thru the CENTER TAB. (Not required for Fire Exit Devices)



OPTIONAL CYLINDER DOGGING

CYLINDER INSTALLATION INSTRUCTIONS
 1-1/4" LONG STANDARD MORTISE CYLINDER REQUIRED



1. Slide hinge side filler out of channel.
2. Install cylinder.
 - a. Insert cylinder locating washer inside the hinge side filler.
 - b. Place blocking ring on outside of hinge side filler.
 - c. Position cylinder in hinge side filler with cylinder core away from touch bar end.
 - d. Fasten cylinder with locknut.
3. Slide hinge side filler into the channel. (DOGGING CAM must be in dogged down position)