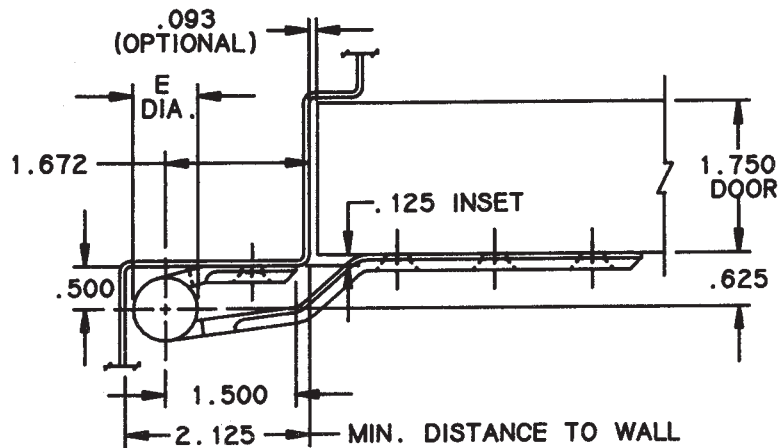
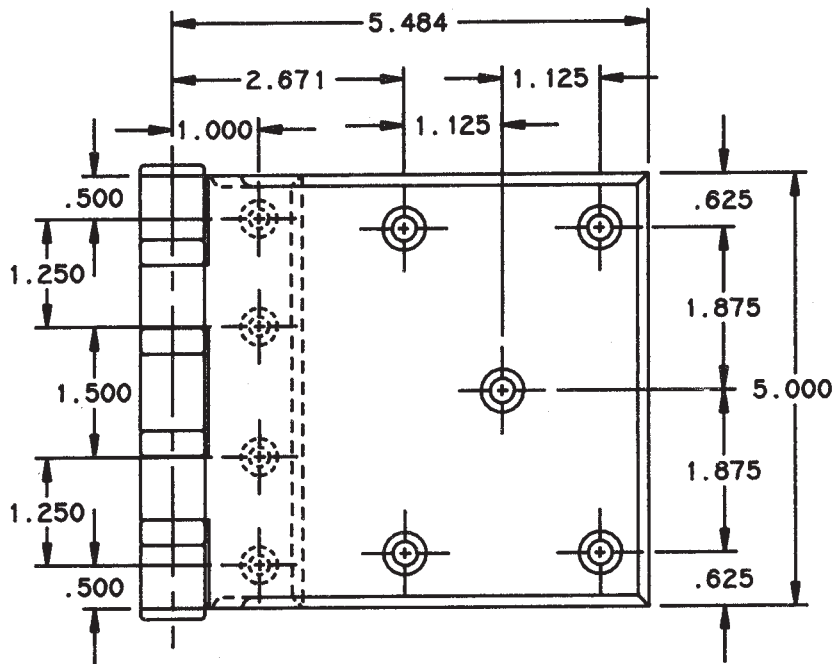


**FULL SURFACE "SWING-CLEAR" TEMPLATE HINGE**

Size: 5"



DO NOT SCALE



**NOTES:**

- 1 This hinge alters the normal pivot point of door. For door closers, friction or overhead door holders to be used in conjunction with this hinge, consult manufacturer of the device to be used for application details.
- 2 1¾ doors will clear opening at 95°.

Class No.	Material	Gauge of Metal	(E) Outside Diameter
CB266	Steel	0.190	0.748
FBB266	Steel	0.190	0.748
CB1951	Steel	0.190	0.715
CB1951R	Steel	0.190	0.748

Template hinges of the hospital type conform to above screw hole location. Hospital type hinges are designated by prefix "HT" to class number. Hand of hinge may be changed by inverting hinge and reversing pin and tip.

Machine Screw Size — Jamb Leaf — ½ × 12-24 F.H.

Door Leaf — 2 × ¼-20 O.H.M.S. with grommet nut or 1½ × No. 14 F.H. WD. SCRS.