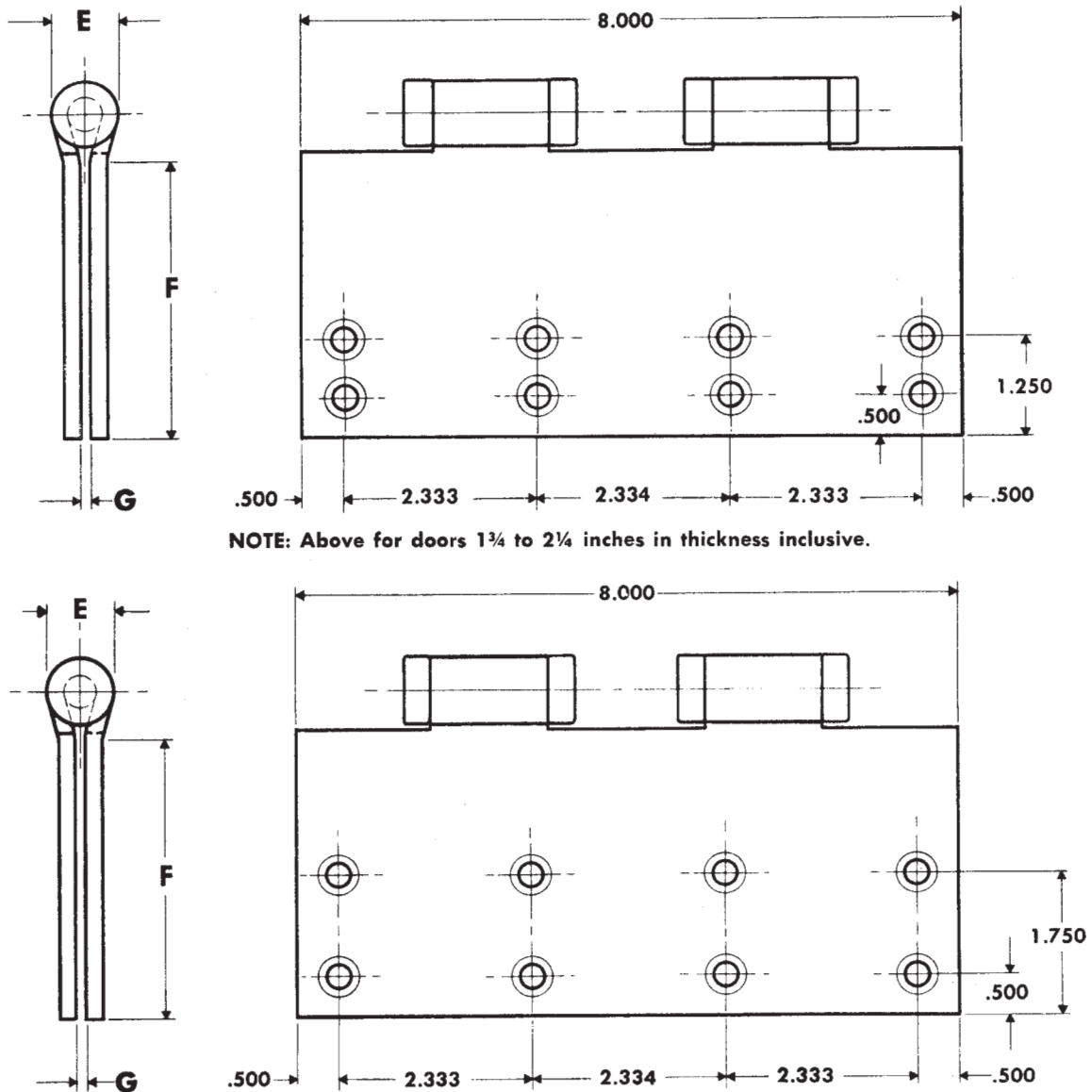


FULL MORTISE TEMPLATE BUTT HINGES

Sizes: 8 x 6 and 8 x 8"



NOTE: Above for doors 1 3/4 to 2 1/4 inches in thickness inclusive.

DO NOT SCALE

NOTE: Above for doors 2 1/2 inches or more in thickness.

CLASS NUMBER		Gauge of Metal	(E) Outside Diameter	DISTANCE FROM EDGE OF LEAF TO SWAGE LINE (F)		G
Steel Hinges	Nonferrous Hinges			8 x 6	8 x 8	
CB168	CB199	0.203	0.847	2 1/4	3 1/4	1/16
FBB168	FBB199	0.203	0.847	2 1/4	3 1/4	1/16

Template hinges of the hospital type conform to above screw hole location. Hospital type hinges are designated by prefix "HT" to class number.

Machine Screw Size — 1/4-20 x 1/2 F.H.
Wood Screw Size — No. 14 x 1 1/2 F.H.