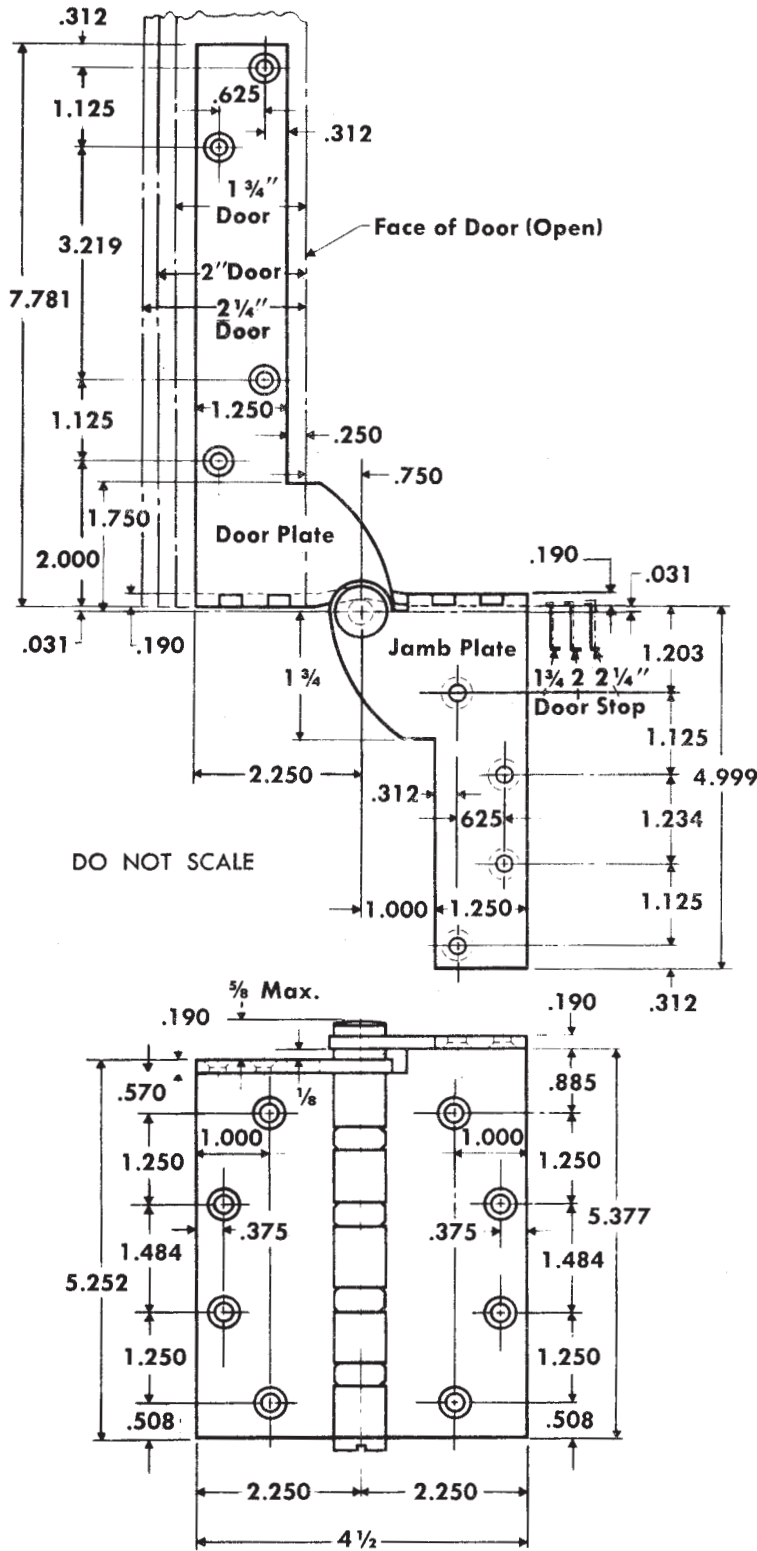


# FULL MORTISE TEMPLATE PIVOT REINFORCED HINGES FOR DOORS WITH SQUARE EDGE HINGE STILES

Size: 5 x 4 1/2"

**TOP HINGE - RIGHT HAND SHOWN  
LEFT HAND IS OPPOSITE**



DO NOT SCALE

For use with door holders, closers and operators. See templates T50-07 and T50-10 for types which provide clearance for concealed devices.

SET CLASS NO.		
Steel	Nonferrous	Gauge of Metal
CB212	CB222	0.190
FBB212	FBB222	0.190
CB1908	CB1968	0.190
CB1908R	CB1968R	0.190

Machine Screw Size — 1/2 x 12-24 F.H.  
Wood Screw Size — 1 1/2 x No. 12 F.H.

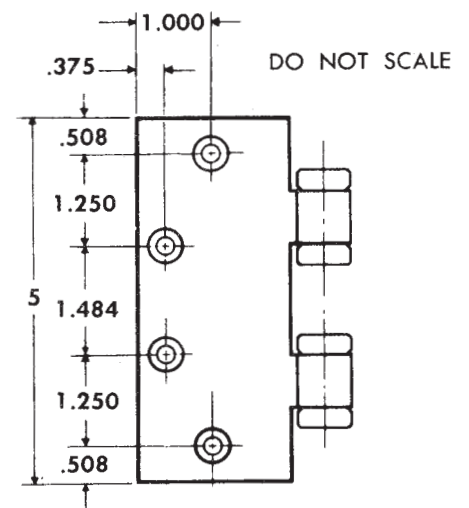
NOTE: Backsets which apply when pivot-reinforced hinge is used on door thickness indicated and when the usual 1/16 stop clearance is desired.

Door Thickness	*Backset on Door	*Backset on Frame
1 3/4	1/4	5/16
2	1/2	9/16
2 1/4	3/4	13/16

**\*CAUTION: These backsets must be used on ALL hinges in set.**

### CENTER AND BOTTOM HINGES

Size — 5 x 4 1/2  
Gauge of Metal — .190



Machine Screw Size — 1/2 x 12-24 F.H.  
Wood Screw Size — 1 1/2 x No. 12 F.H.