

Inside door preparation

For use with Von Duprin exit devices

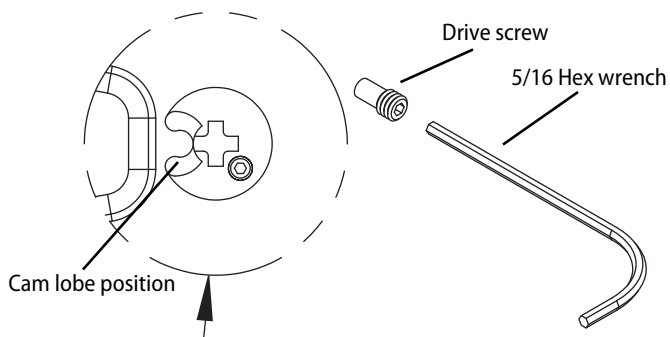
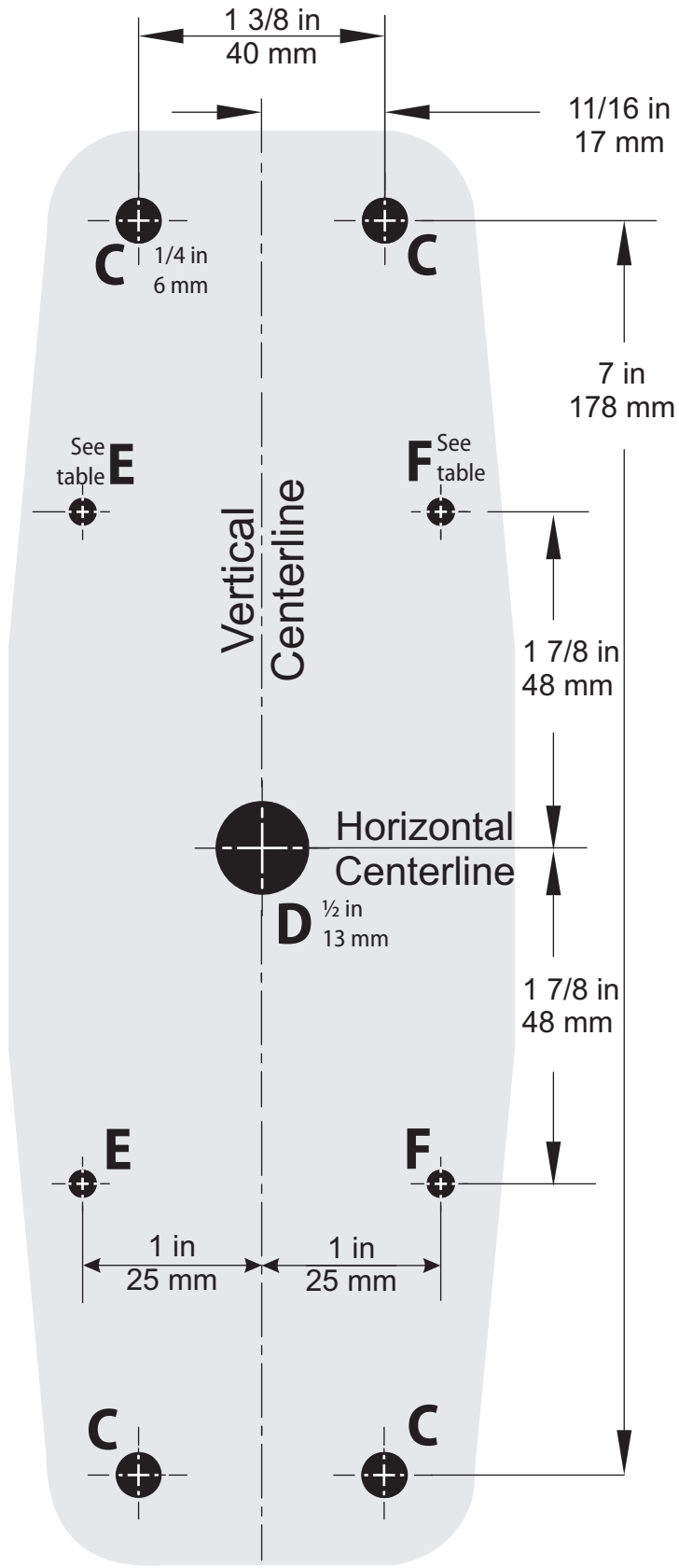


Figure 1 Replace drive screw

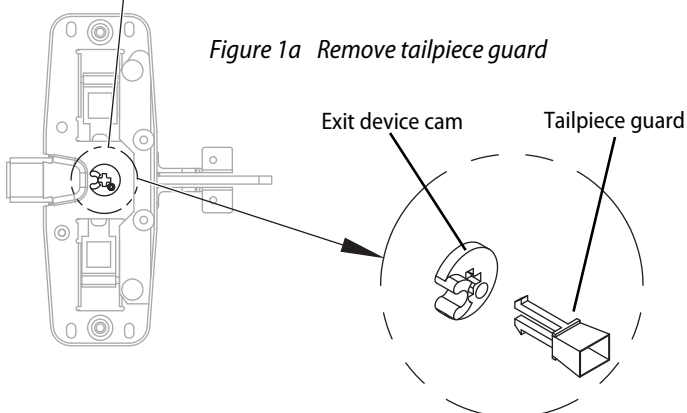
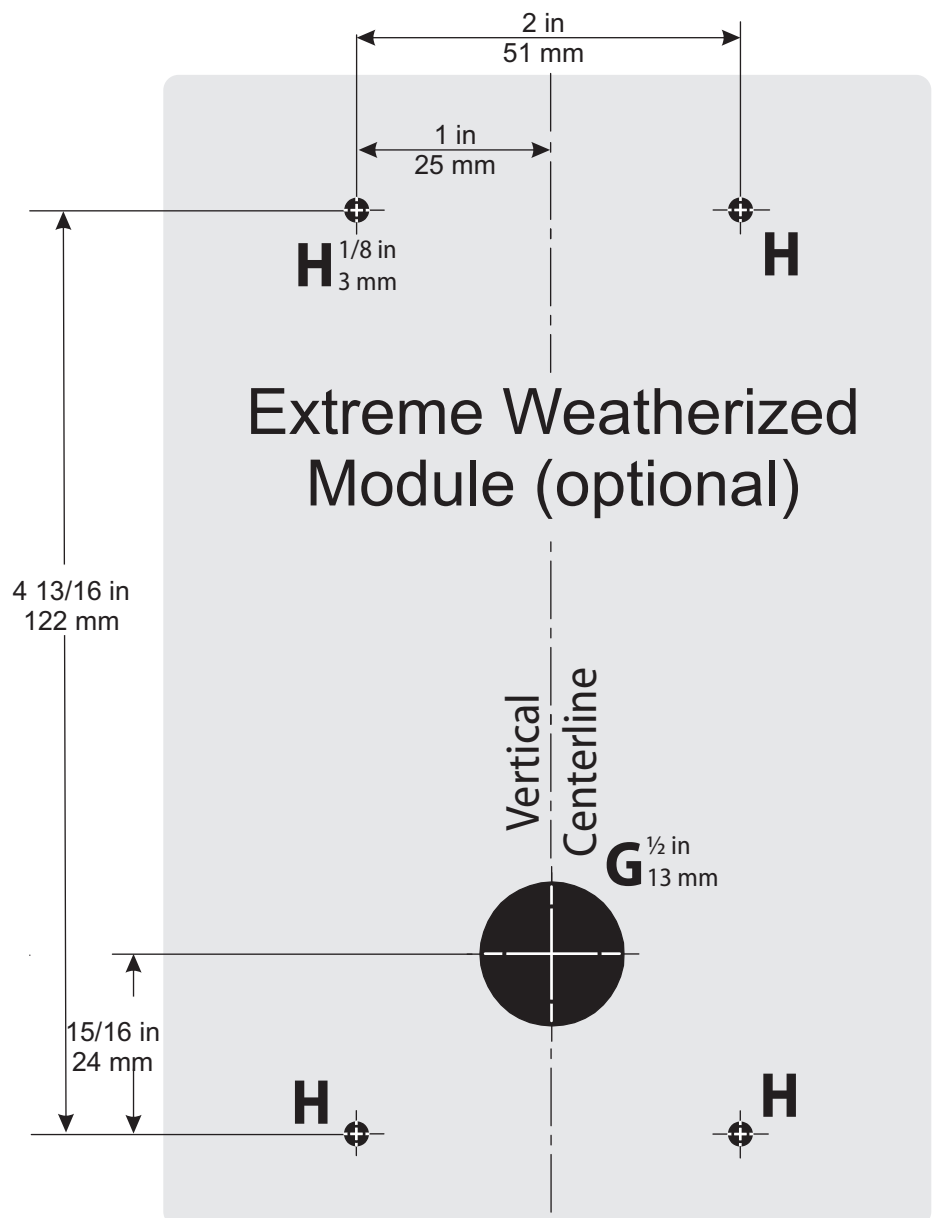


Figure 1a Remove tailpiece guard



Align the Extreme Weatherized module template as close to the exit device chassis as practical.

Instructions:

- 1 This template is for use on new construction, or doors that have previously used the following Von Duprin Exit Device:
Rim Exit Series 98-F and 99-F;
Vertical Rod Series 9827-F and 9927-F; or,
Concealed Vertical Rod Series 9847-F, 9947-F, 9848-F or 9948-F.
- 2 If the removed trim was Von Duprin function K, L or TP, replace the drive screw in the exit device cam to provide the night latch function. See Figure 1.
- 3 Revise the hole pattern on the door to the pattern on this template. If the existing holes on the door are larger than on this template, they may be used if they meet the exit device manufacturer's specifications.
- 4 Remove the Von Duprin tailpiece guide, if installed. See Figure 1a.
- 5 If replacing Von Duprin trim style 990, 991, 696, or 697, plug the unused mounting holes.
- 6 Reinstall the exit device on the door using holes E or F as applicable. Reinstall the end cap mounting bracket using the original hardware.
- 7 Refer to *Installation Instructions for Stanley Omnilock QAXOM Exit Device Locks (T83325)* for installation of the Omnilock Quick Adapter.

| Hole | Diameter | Depth | Additional Information |
|------|---|---|--|
| A | 13/32 in (10 mm) | 1 9/16 in (40 mm) | For mounting post |
| | 15/32 in (12 mm) | 1/4 in (6 mm) | Counter sink |
| B | 1 7/8 in (46 mm) | 13/16 in (21 mm) | Bearing clearance hole |
| C | 1/4 in (6 mm) | Through door | Exit device and adapter mount |
| D | 1/2 in (13 mm) | Through door | Tailpiece access hole |
| E | Metal : #10-24 tap Wood: 1/8 in (3 mm) | Metal: Through one side Wood: 1 in (25 mm) | Left hand door |
| F | | | Right hand door |
| G | 1/2 in (13 mm) | Through one side | For Extreme Weatherized models on hollow metal door only |
| H | 1/8 in (3 mm) | | |
| J | 1/2 in (13 mm) | | |

Title Installation Template for QAXOM used with Von Duprin VD8 Exit Device

STANLEY OMNILOCK

Series QAXOM Backset ---- Trim style ---- Door thickness ----

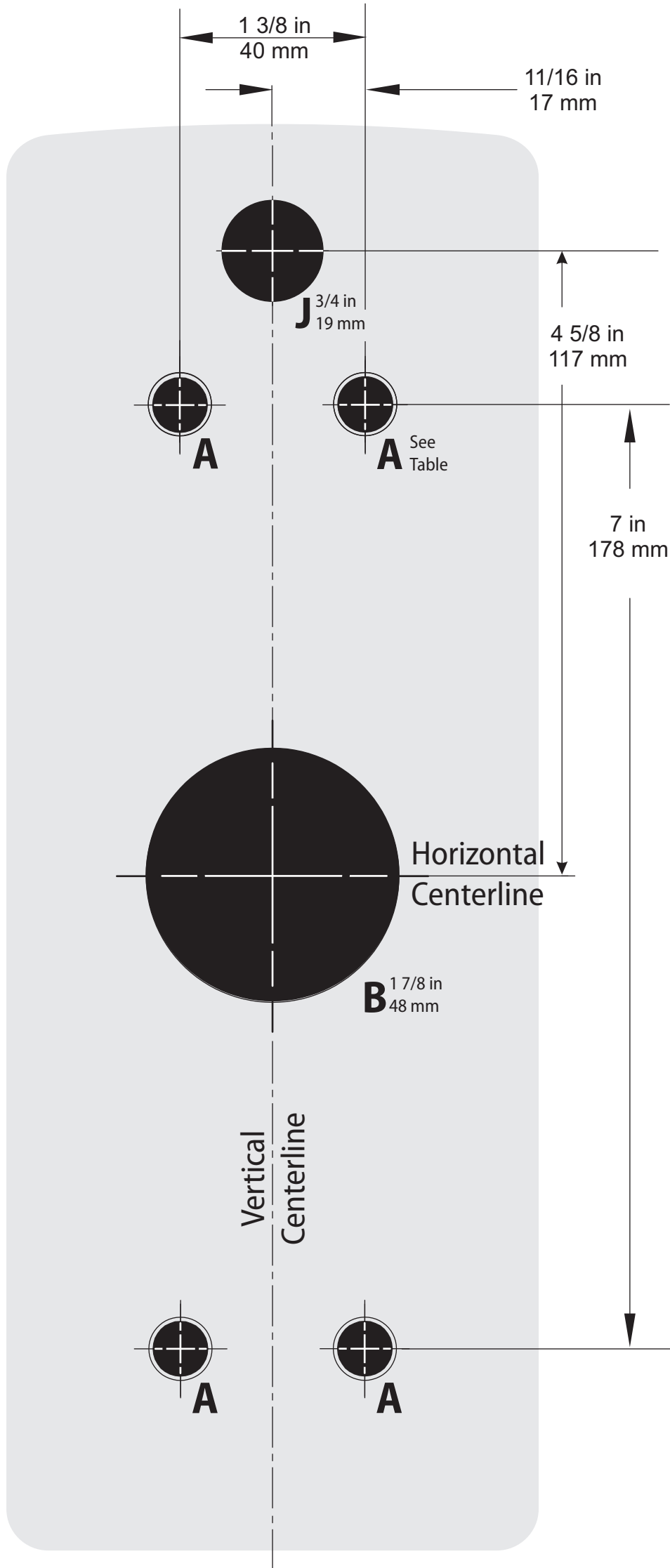
Rev date 02/2010

Template number **OM10**

Rev **A**

Outside door preparation

For use with Von Duprin exit devices



| Hole | Diameter | Depth | Additional Information |
|------|---|--|---|
| A | 13/32 in (10 mm) | 1 9/16 in (40 mm) | For mounting post |
| | 15/32 in (12 mm) | 1/4 in (6 mm) | Counter sink |
| B | 1 7/8 in (46 mm) | 13/16 in (21 mm) | Bearing clearance hole |
| C | 1/4 in (6 mm) | Through door | Exit device and adapter mount |
| D | 1/2 in (13 mm) | Through door | Tailpiece access hole |
| E | Metal : #10-24 tap Wood: 1/8 in (3 mm) | Metal: Through oneside Wood: 1 in (25 mm) | Left hand door |
| F | | | Right hand door |
| G | 1/2 in (13 mm) | Through one side | <i>For Extreme Weatherized models on hollow metal door only</i> |
| H | 1/8 in (3 mm) | | |
| J | 1/2 in (13 mm) | | |