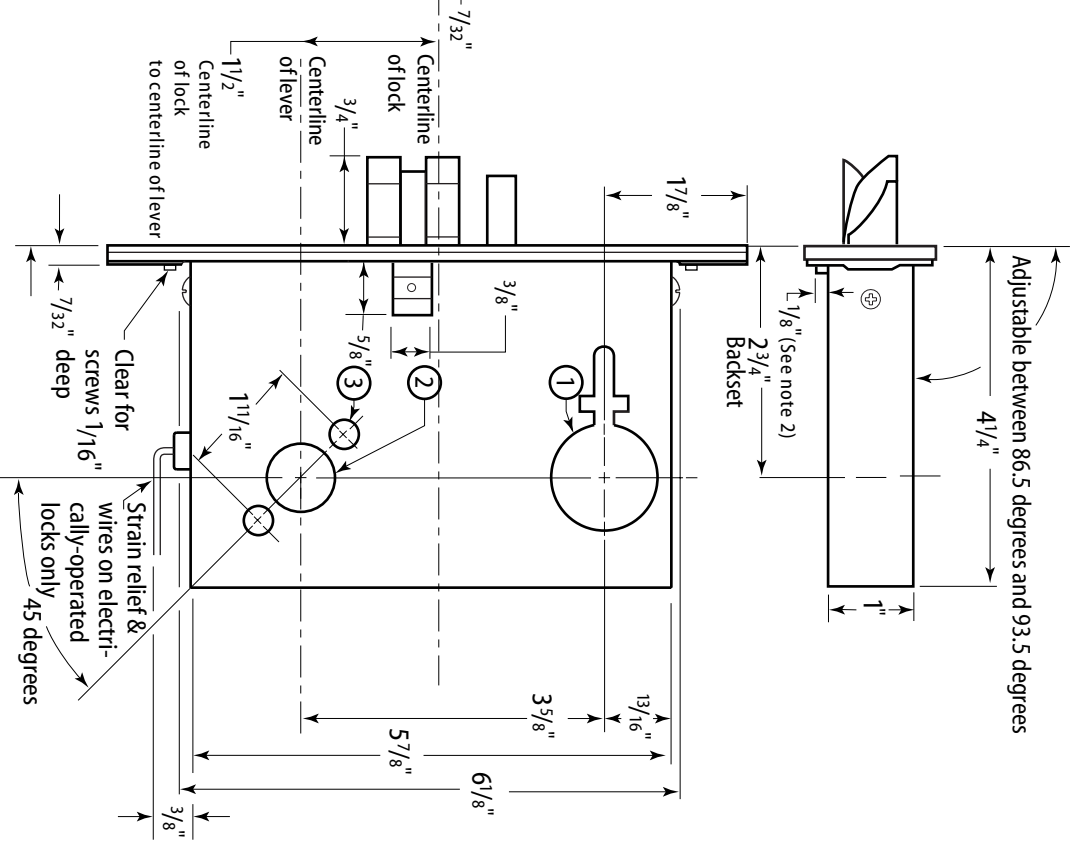


Locate solid portion at the top

- Lock case holes:**
- ① **Cylinder hole**— $1\frac{1}{4}$ " dia.\*
  - ② **Knob hole**— $7/8$ " dia.
  - ③ **Thru-bolt holes**— $3/8$ " dia. (two required)
- \*For 36H and 37H Series drill a  $1\frac{3}{4}$ " dia. hole.

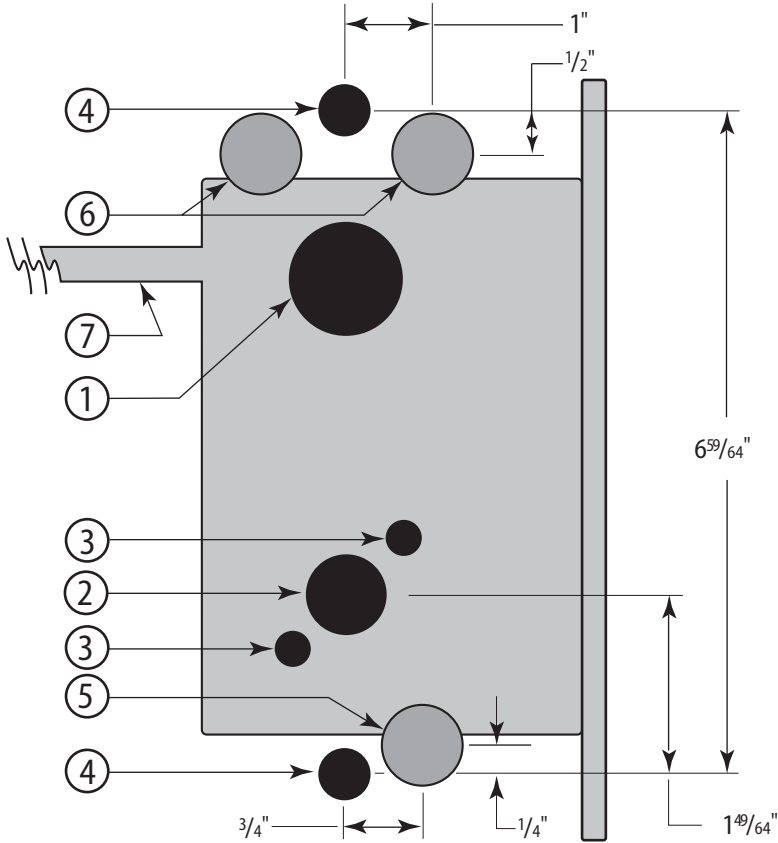
**Notes**

- 1 Before drilling check the hole pattern chart on the reverse side. See also the W15 installation template.
- 2 Mortise the clearance for the anti-friction latch.
- 3 The maximum door-to-frame gap is  $3/16$ "
- 4 Allow  $3/64$ " clearance for the strike box thickness.
- 5 For metal doors, lock case support is required from the door manufacturer.
- 6 Tap for a #12-24 machine screw or drill for #12 wood screw (a combination screw is supplied).



Title Installation Specifications for 34HW-35HW IDH Max Mortise Locks				<b>BEST ACCESS SYSTEMS</b>		
Series 34HW-35HW	Backset 2 3/4"	Trim style MS, KP, PH, PM	Door thickness 1 3/4"-3"	Rev date 10/2003	Template number <b>W12</b>	Rev <b>B</b>

Lockset function	Inside holes						Outside holes					
	Knob 7/8" dia	Through-bolt 3/8" dia (2 holes)	Trim 5/8" dia (2 holes)	Sensor & solenoid wire 7/8" dia	Field harness & reader wire A 7/8" dia	Cylinder 1 1/4" dia	Knob 7/8" dia.	Through-bolt 3/8" dia (2 holes)	Trim 5/8" dia (2 holes)	Field harness & reader wire A 7/8" dia	Hole through door 3/8" dia	
EEL	■	■	■	■	■	■	■	■	■	■	■	
EEU	■	■	■	■	■	■	■	■	■	■	■	
NEL	■	■	■	■	■	■		■	■	■	■	
NEU	■	■	■	■	■	■		■	■	■	■	



**Note**

A Drill only one of the two holes. See the W15 Installation Template.