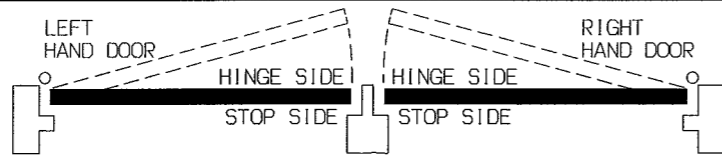


# DOOR CLOSER INSTALLATION INSTRUCTIONS D-4550EH

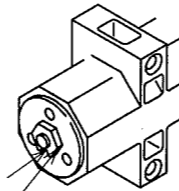
LEFT HAND DOOR ILLUSTRATED. SAME DIMENSIONS APPLY FOR RIGHT HAND DOOR—MEASURED FROM HINGE  $\perp$ .



● Adjust spring power according to chart for track rail application

Closer Size	Max. Door Width		Turns of spring adjusting nut	
	Exterior	Interior	from Preset	from Minimum
1	---	Less than 2'-8"	-3	0
2	Less than 2'-6"	2'-8"	0	+3
3	2'-6"	3'-2"	+4	+7
4	3'-0"	3'-8"	+12	+20

Adjust spring power for door width as indicated in chart. To increase closing power, turn spring adjusting nut clockwise.

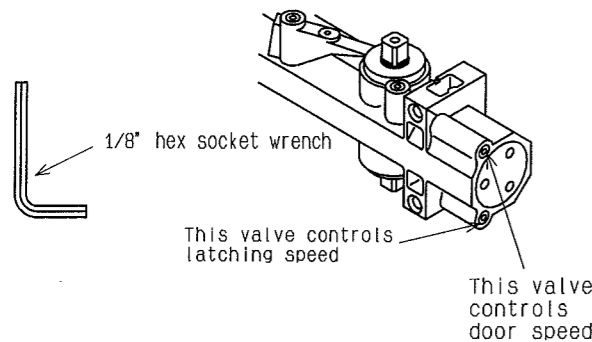


Spring adjusting nut

## Final adjustment and regulating procedures

### ● Regulating door speed and latching speed

Turn socket screw clockwise to slow down or counter-clockwise to speed up door movement.



1/8" hex socket wrench

This valve controls latching speed

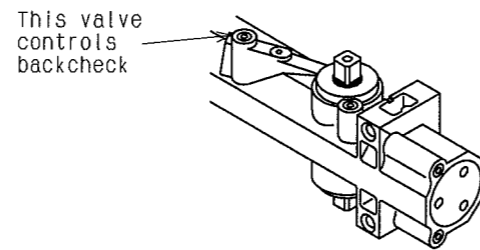
This valve controls door speed

### ● Regulating backcheck

The intensity of backcheck action is regulated by valve shown. Turn clockwise to increase or counter-clockwise to decrease checking.

#### CAUTION:

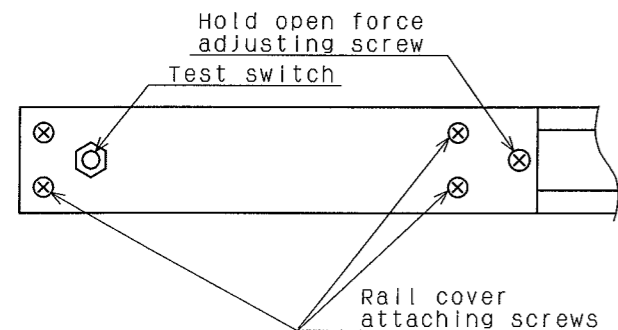
Set valve for a slight cushioning effect. It is damaging to the closer if the checking action is too abrupt. Backcheck should never be used in lieu of a door stop.



This valve controls backcheck

### ● Adjusting hold open force

To increase hold open force, turn hold open adjusting screw clockwise. To decrease force, turn hold open adjusting screw counterclockwise.



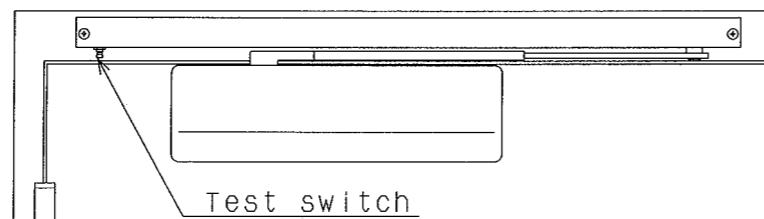
Hold open force adjusting screw

Test switch

Rail cover attaching screws

### ● Test steps—electrical function:

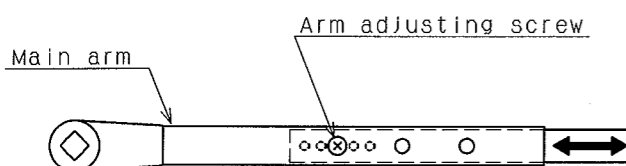
1. With power on, door should remain in the preset hold-open position.
2. Push test switch. The door should begin closing. NOTE: Normal closing speed for 90 degree application is 5-7 seconds evenly divided between main and latch speed.
3. To ensure proper function, step two should be repeated periodically.



Test switch

### ● Adjusting hold open angle

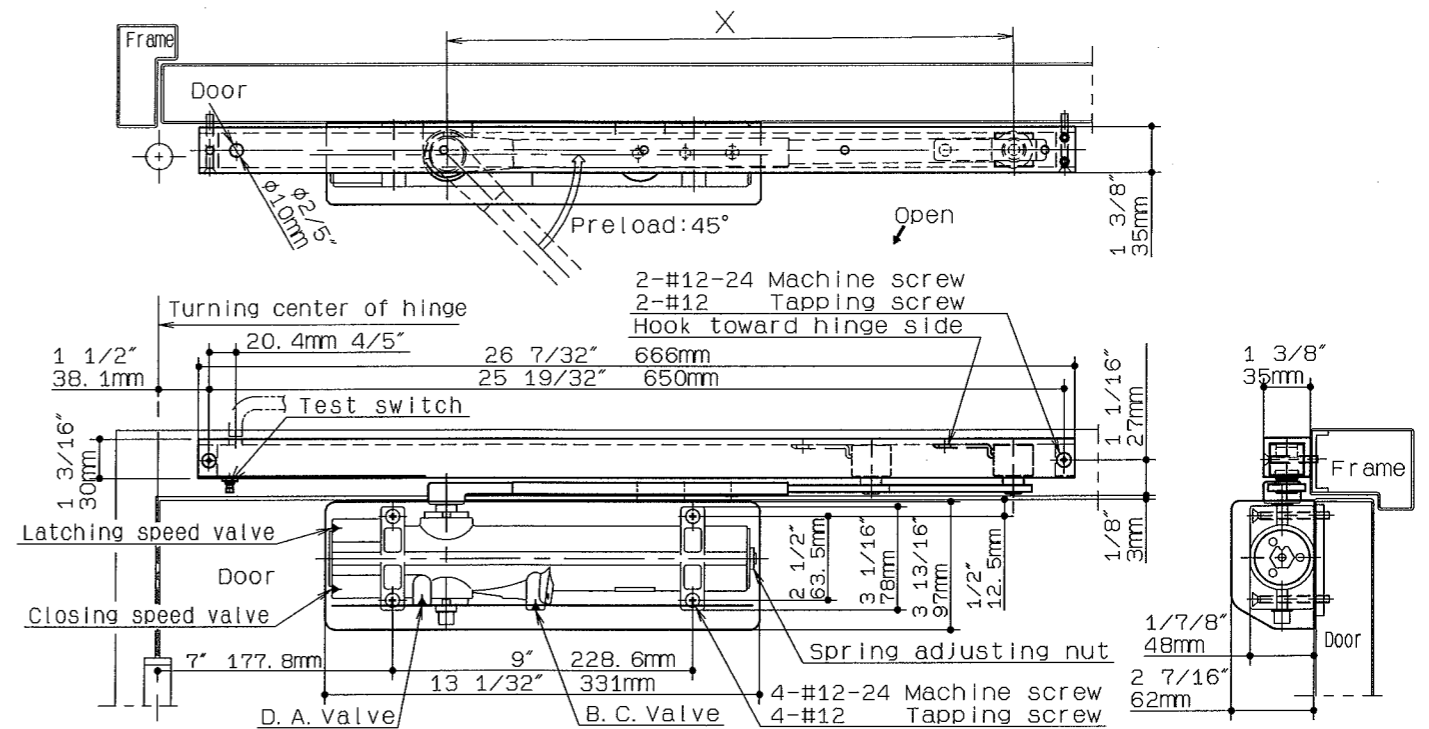
Remove arm adjusting screw and open door to desired angle. Insert screw and fasten.



Arm adjusting screw

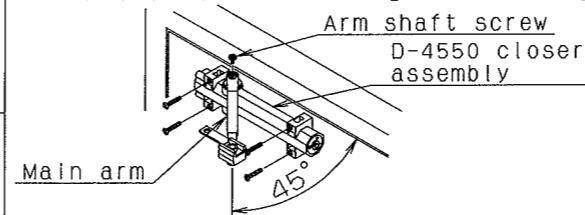
Main arm

## Hinge side mounting



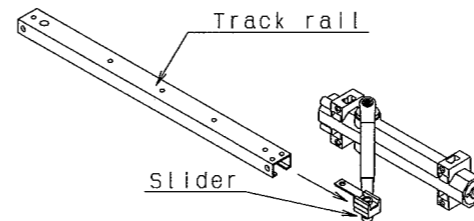
Hold open device	Arm length (X)																									
	Door hold open angles	12-23/32"	13-1/16"	13-7/16"	13-25/32"	14-1/8"	14-1/2"	14-27/32"	15-3/16"	15-9/16"	15-3/16"	16-1/4"	16-5/8"	16-31/32"	93°	97°	100°	104°	108°	112°	116°	121°	126°	131°	137°	144°

- ① Assemble main arm to closer 45° away from door as illustrated below. Attach arm with washer and screw. Attach closer to door with short end of closer facing toward hinge.



Arm shaft screw  
D-4550 closer assembly

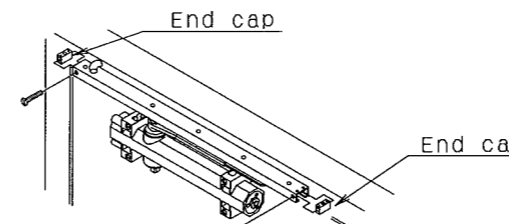
- ② Insert slider of arm inside track rail as illustrated below.



Track rail

Slider

- ③ Assemble end cap in track rail. Attach track rail on frame with screw.

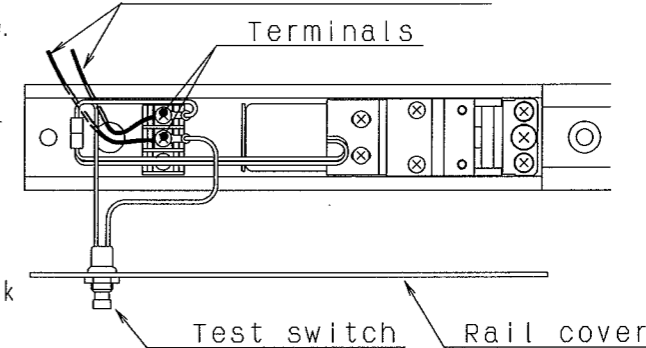


End cap

End cap

- ④ Open rail cover and connect power supply lines to terminals

Operating voltage  
24VDC ± 10% @ 0.15A



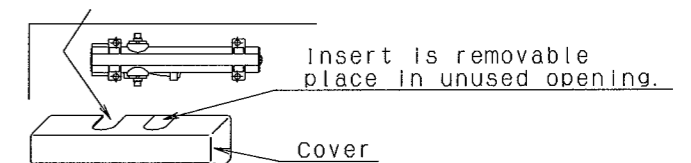
Terminals

Test switch Rail cover

- ⑤ Adjust and regulate door closer for speed and backcheck as directed at page 1.
- ⑥ Adjust hold open angle as directed at page 1.

- ⑦ Install cover as follows

Align cover openings with the closer spindle, and snap ends of cover into position over closer.

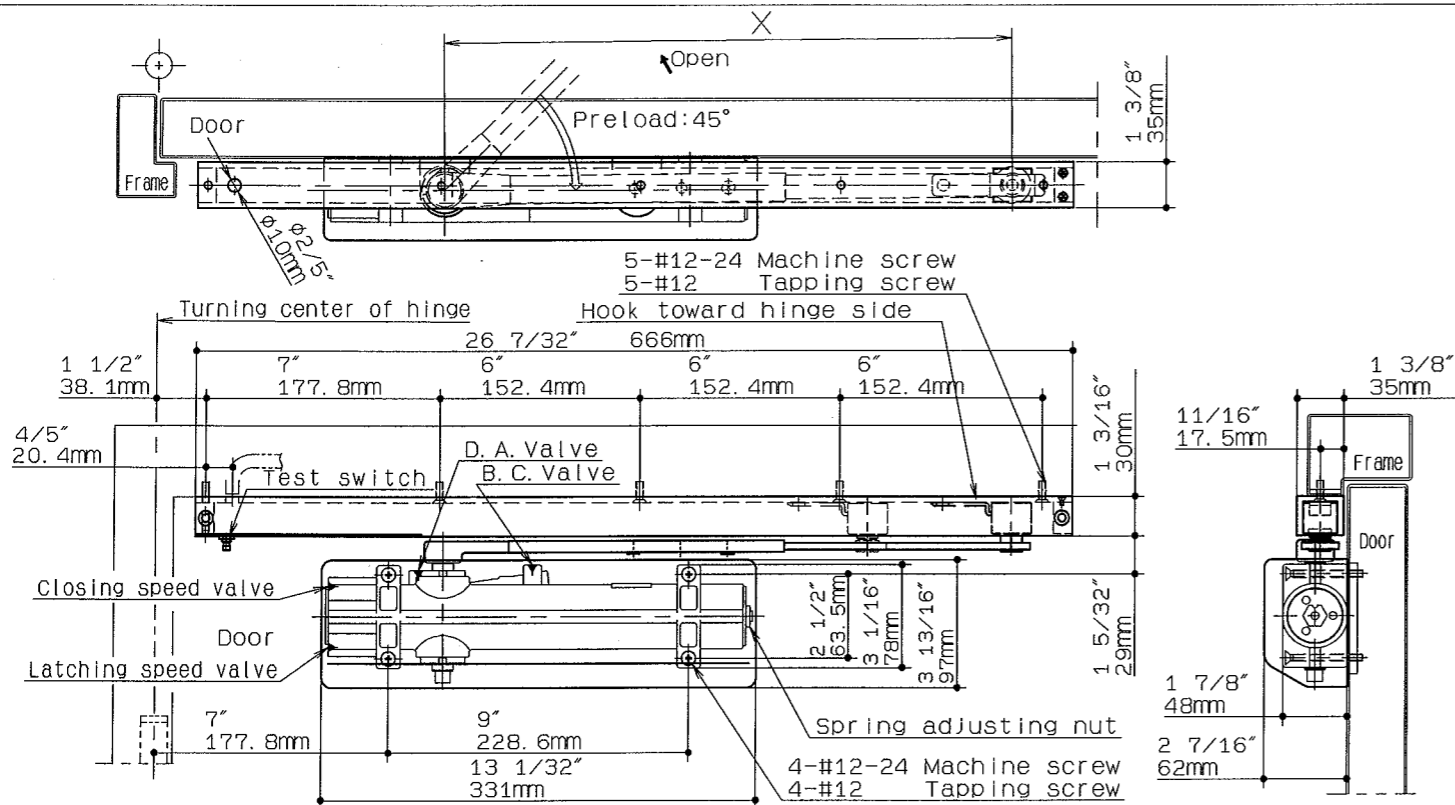


Insert is removable place in unused opening.

Cover

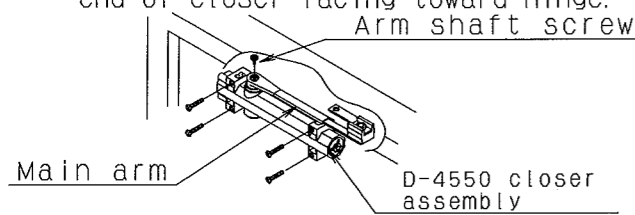


# Stop side mounting

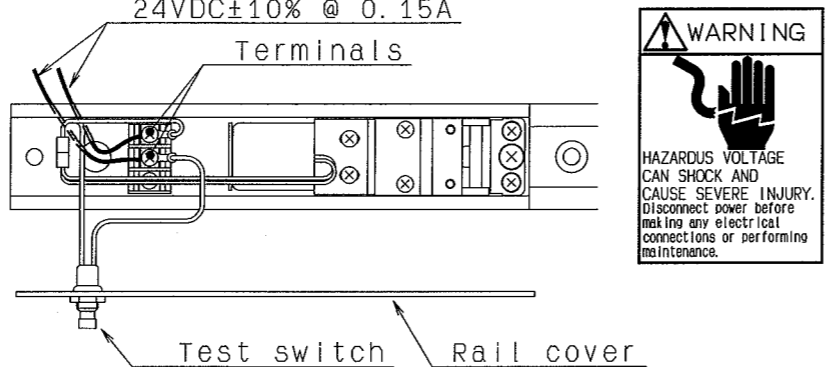


Hold open device	Arm length (X)												
	12-23/32"	13-1/16"	13- 7/16"	13-25/32"	14- 1/ 8"	14- 1/ 2"	14-27/32"	15- 3/16"	15- 9/16"	15- 3/16"	16- 1/ 4"	16- 5/ 8"	16-31/32"
	323mm	332mm	341mm	350mm	359mm	368mm	377mm	386mm	395mm	404mm	413mm	422mm	431mm
Door hold open angles	86°	89°	92°	95°	98°	101°	105°	108°	112°	116°	120°	126°	129°

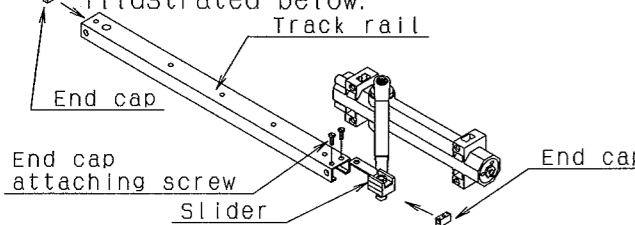
- Assemble main arm to closer 45° away from door as illustrated below. Attach arm with washer and screw. Attach closer to door with short end of closer facing toward hinge.



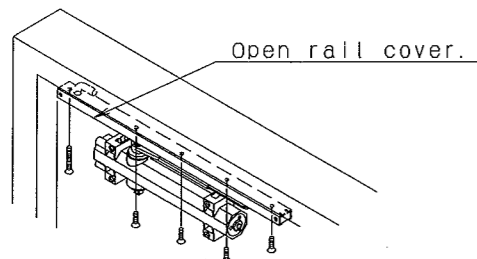
- Open rail cover and connect power supply lines to terminals. Operating voltage 24VDC±10% @ 0.15A



- Insert slider of arm inside track rail and attach end cap as illustrated below.



- Attach track rail on frame with screw.



- Adjust and regulate door closer for speed and backcheck as directed at page 1.
- Adjust hold open angle as directed at page 1.
- Install cover as follows. Align cover openings with the closer spindle, and snap ends of cover into position over closer.

