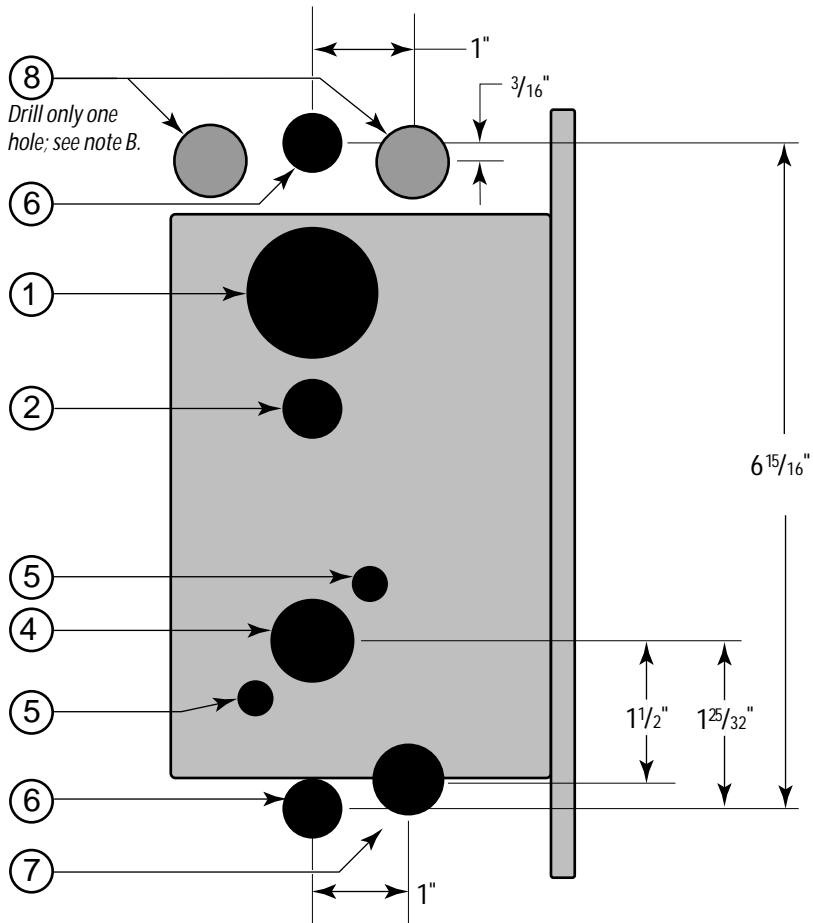


Lock function	Inside holes								Outside holes				
	② Turn knob 5/8" dia.	④ Lever 7/8" dia.	⑤ Through-bolt 3/8" dia. (2 holes)	⑥ Inside trim A 5/8" dia. (2 holes)	⑦ Sensor & motor wire 7/8" dia.	⑧ Harness B 7/8" dia.	⑧ Cylinder 1 3/8" dia.	① Lever 7/8" dia.	④ Through-bolt 3/8" dia. (2 holes)	⑤ Outside trim 5/8" dia. (2 holes)	⑥ Harness B 7/8" dia.		
EV		■	■	■	■	■	■	■	■	■	■		
FV	■	■	■	■	■	■	■	■	■	■	■		
LV	■	■	■	■	■	■		■	■	■	■		
NV		■	■	■	■	■		■	■	■	■		



Notes

- A. The general tolerance is $\pm 1/64$ ".
- B. Drill only one of the two holes. See the G06 Template—Installation Template for 35HG, 35HBV, and 35HZ Mortise Locks.

Title Hole Pattern Chart for 35HG, 35HBV, and 35HZ Mortise Locks				BEST ACCESS SYSTEMS			
Series 35HG, 35HBV, 35HZ	Backset 2 3/4"	Trim style DV, MS PH, PM, SC, KP	Door thickness 1 3/4"-3"	Rev date 3/2003	Template number G04	Rev E	