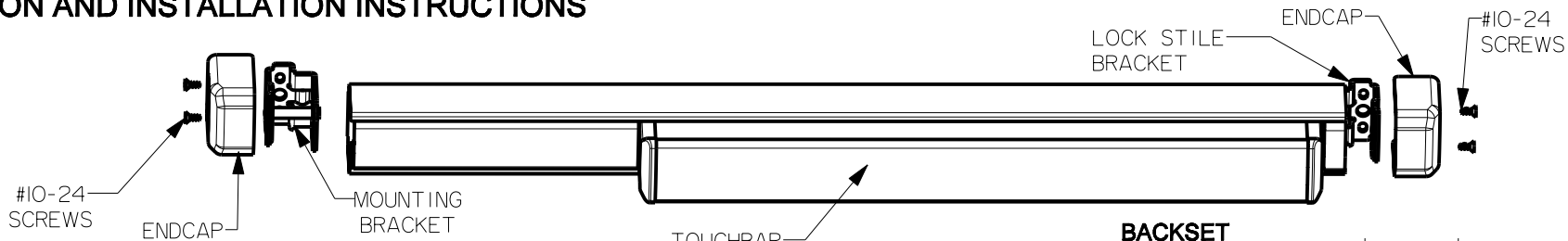


# DOOR PREPARATION AND INSTALLATION INSTRUCTIONS

## DUMMY TOUCHBAR

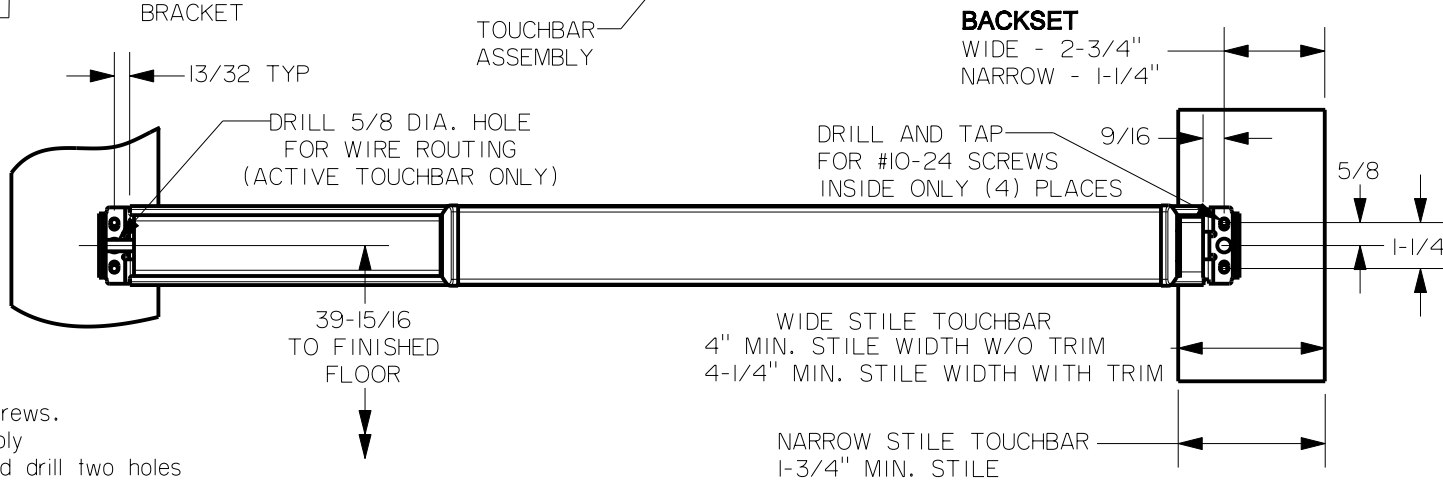


## RIGID TOUCHBAR

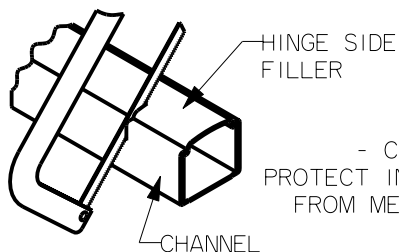
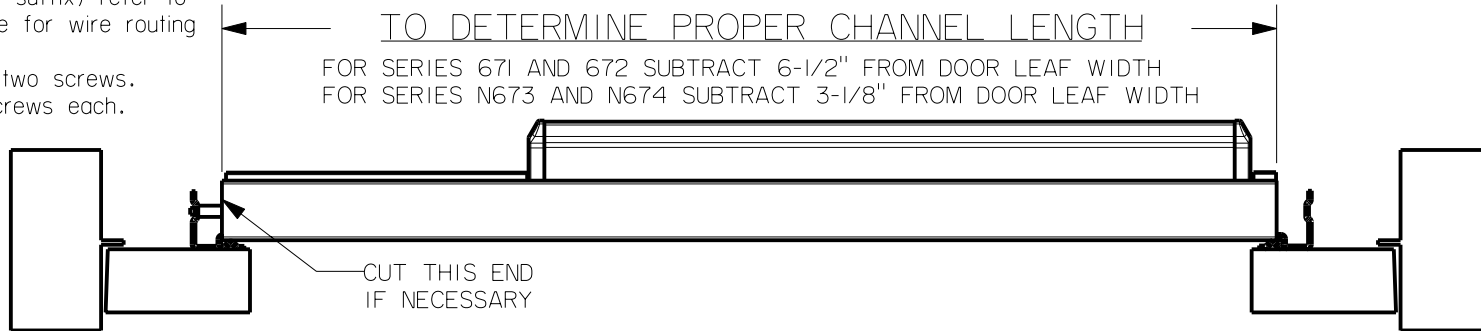
**WIDE STILE - 671DR-3 AND 671DR-4**  
**NARROW STILE - N673DR-3 AND N673DR-4**

## ACTIVE TOUCHBAR

**WIDE STILE - 672DA-3 AND 671DA-4**  
**NARROW STILE - N674DA-3 AND N674DA-4**





- 1) Mark centers, drill and tap as indicated.
- 2) Determine proper channel length as indicated, cut if needed.
- 3) Mount lock stile bracket to door with two screws.
- 4) Insert mounting bracket into touchbar assembly tight against channel. Level device. Mark and drill two holes for #10 sheet metal screws or #10-24 machine screws.
- 5) For active touchbar (Models with "DA" suffix) refer to O185I-II for wiring details and drill hole for wire routing as noted above.
- 6) Fasten mounting bracket to door with two screws, and attach both end caps with two screws each.



- CAUTION -  
 PROTECT INSIDE OF DEVICE  
 FROM METAL SHAVINGS

NOTE: IF DEVICE HAS ELECTRICAL OR OTHER OPTIONS SEE INSTRUCTIONS PACKED WITH THAT OPTION.

 <b>Precision Hardware</b> a Division of Stanley Security Solutions, Inc. <a href="http://www.stanleysecuritysolutions.com">www.stanleysecuritysolutions.com</a>			
 DEVICE SERIES		TRIM SERIES	
671DR-3, 671DR-4, N673DR-3, N673DR-4 672DA-3, 671DA-4, N674DA-3, N674DA-4		N/A	
STRIKE NO.	RELEASED DATE	TEMPLATE NO.	REV
N/A	08/26/03	01919-II-000	A