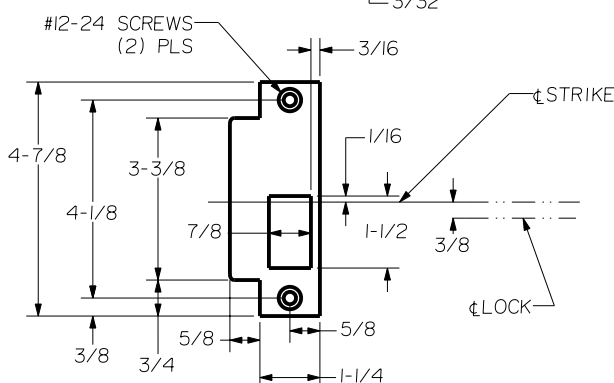
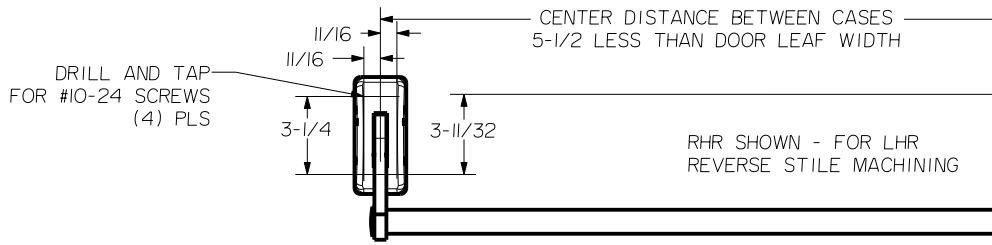
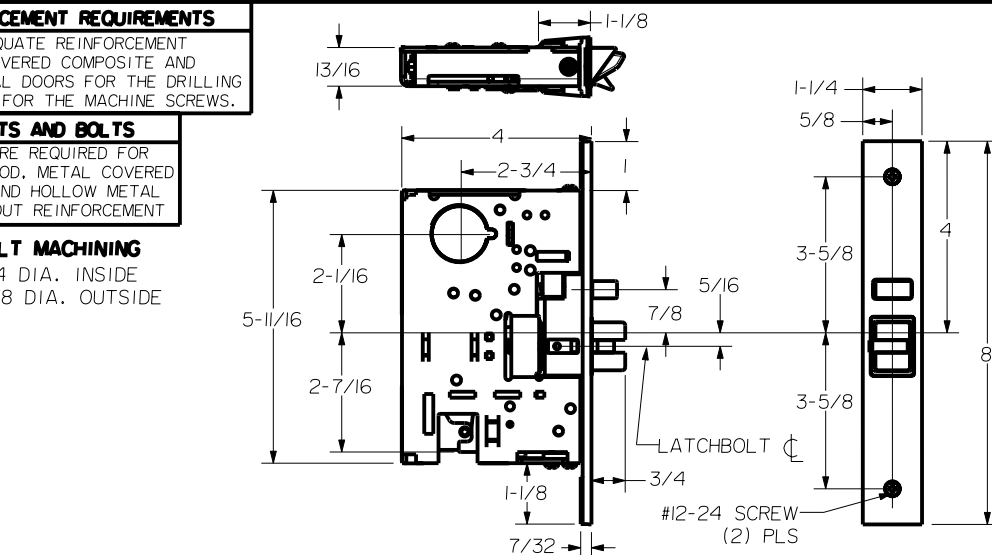


REINFORCEMENT REQUIREMENTS
 PROVIDE ADEQUATE REINFORCEMENT TO METAL COVERED COMPOSITE AND HOLLOW METAL DOORS FOR THE DRILLING AND TAPPING FOR THE MACHINE SCREWS.

SEX NUTS AND BOLTS
 SEX BOLTS ARE REQUIRED FOR PLASTIC, WOOD, METAL COVERED COMPOSITE AND HOLLOW METAL DOORS WITHOUT REINFORCEMENT

SEX BOLT MACHINING
 DRILL 1/4 DIA. INSIDE
 DRILL 3/8 DIA. OUTSIDE



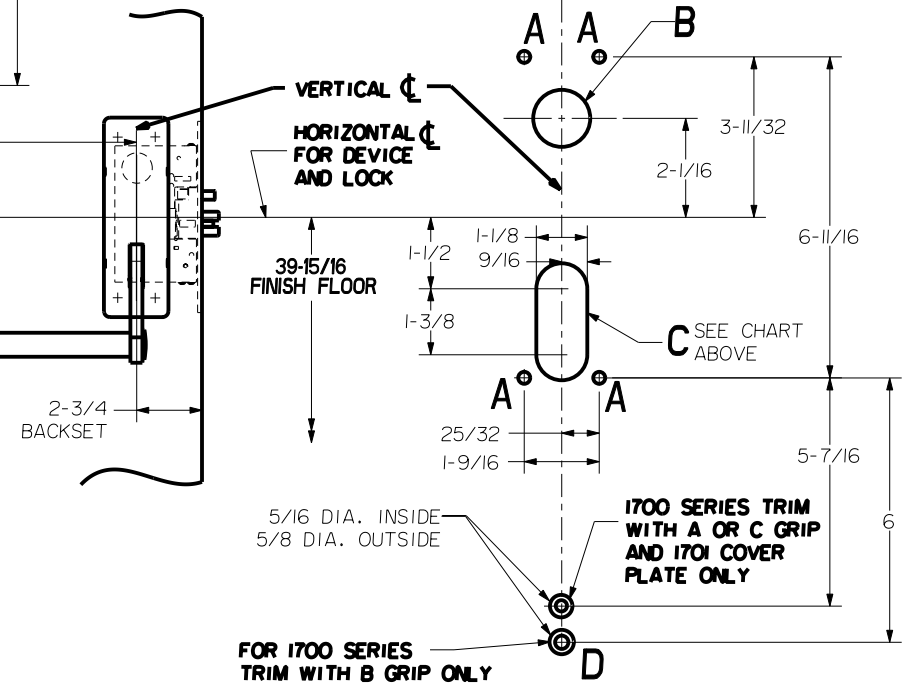
1-1/4 STRIKE S982


NOTE:
 "LETTER" AT END OF TRIM MODEL NO. DESIGNATES LEVER OR GRIP STYLE. EXCEPT AS NOTED, LEVER OR GRIP STYLE HAS NO EFFECT ON STILE MACHINING.

S985, S984 OPTIONAL OPEN BACK STRIKES
 SEE TEMPLATE NUMBER HM-S985

HOLE (4) PLS A	DEVICES	TRIMS	HOLE B	HOLE C
#10-24 TAP INSIDE ONLY	301.FL.301	EXIT ONLY	NO	SLOT INSIDE ONLY
	303.FL.303	CYL ONLY	1-3/16 DIA OUTSIDE	
1/4 DIA INSIDE 3/8 DIA OUTSIDE	301.FL.301	1701,4901	NO	SLOT THRU DOOR
	302.FL.302	1702,4902	1-3/8 DIA OUTSIDE ONLY	
	303.FL.303	1703,M4903		
	305.FL.305	M1705		
	308.FL.308	M4908 VM4908		
	314.FL.314	M4914	NO	
	315.FL.315	M1715		

LOCK STILE MACHINING



 Precision Hardware a Division of Stanley Security Solutions, Inc. www.stanleysecuritysolutions.com			
DEVICE SERIES		TRIM SERIES	
300, FL300		EXIT ONLY, CYL ONLY, 1700,4900	
STRIKE NO.	RELEASED DATE	TEMPLATE NO.	REV
S982	5/01/05	HM-300A	C