

45H/47H Drilling Instructions/Template

Spanish and French translations are available on <https://dhwsupport.dormakaba.com/hc/en-us>

Traducciones al español y francés están disponibles en <https://dhwsupport.dormakaba.com/hc/en-us>

Des traductions en espagnol et en français sont disponibles sur <https://dhwsupport.dormakaba.com/hc/en-us>



dormakaba Group

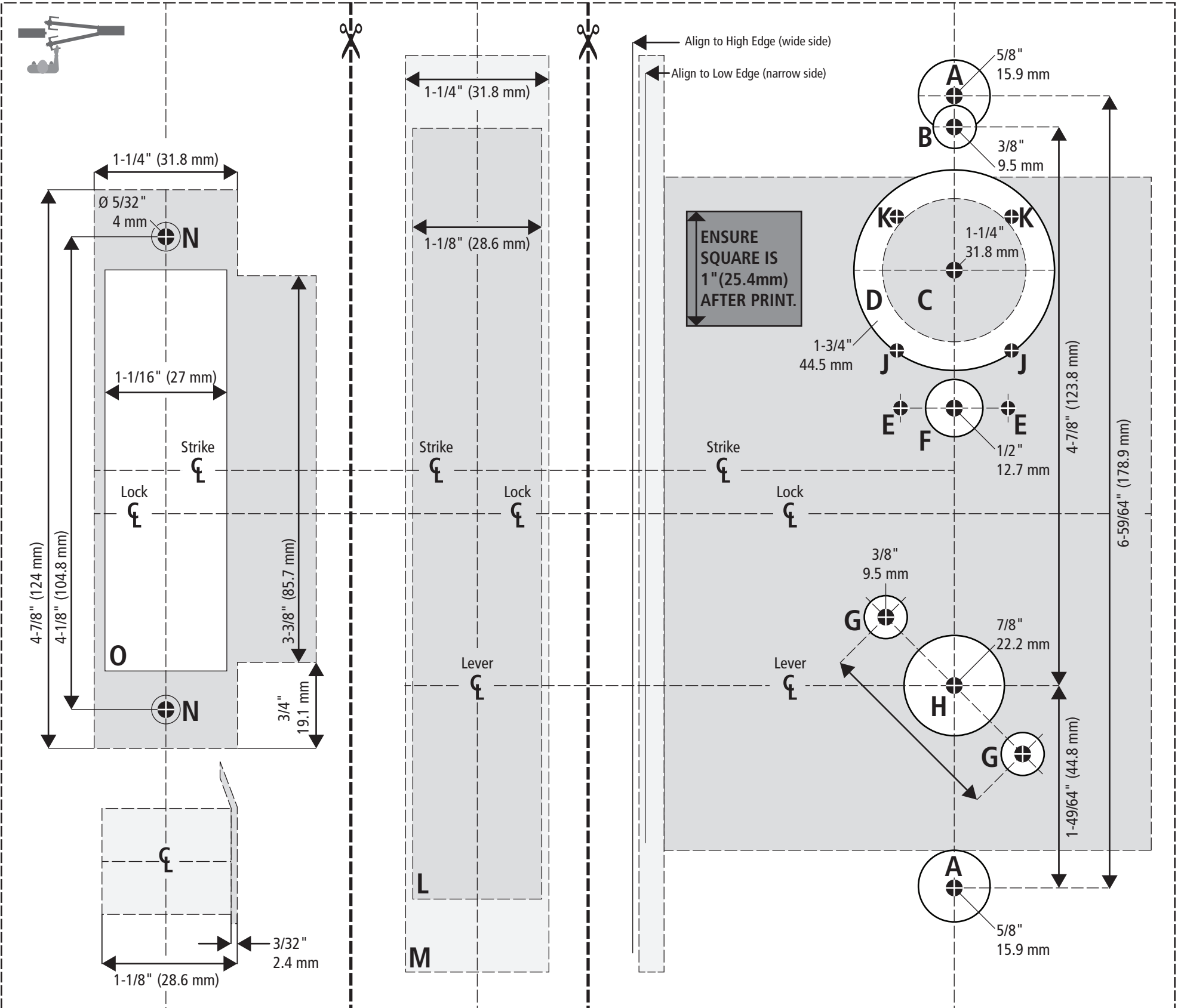
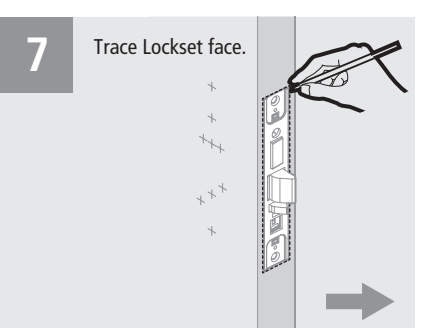
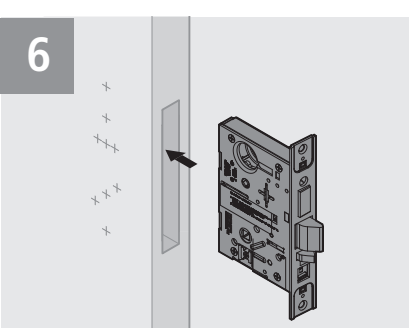
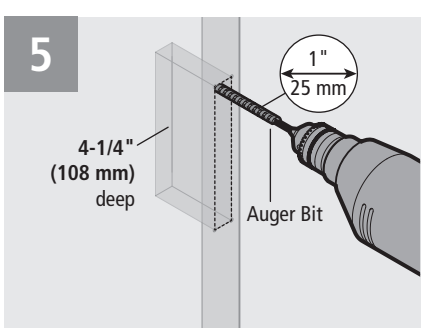
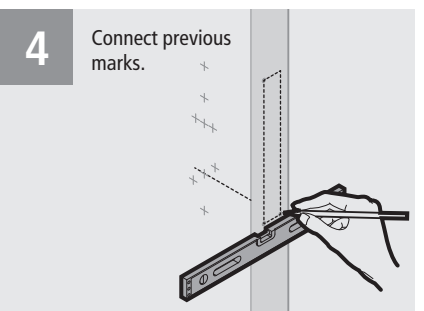
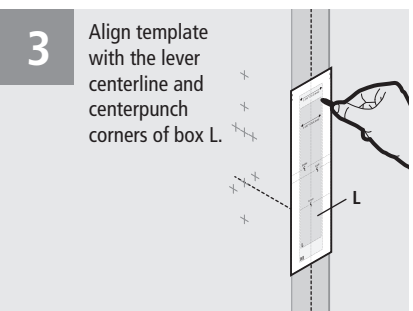
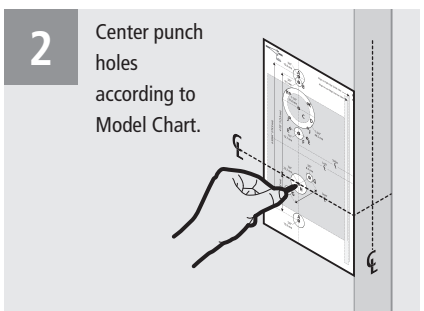
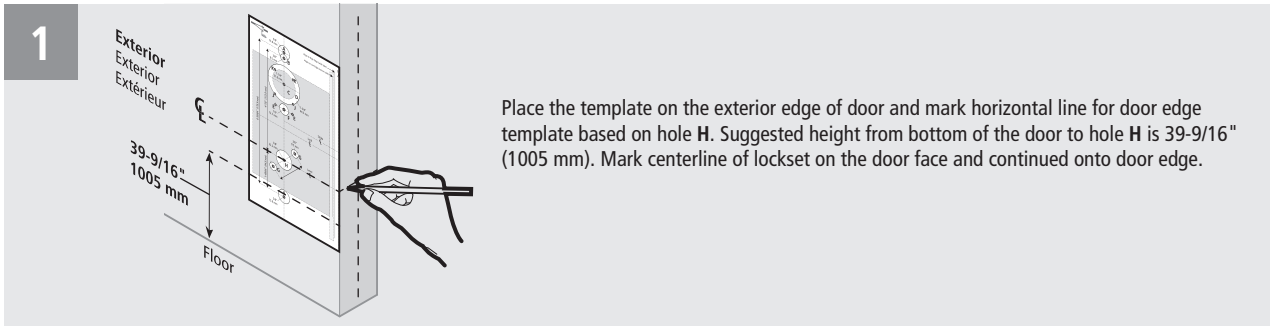
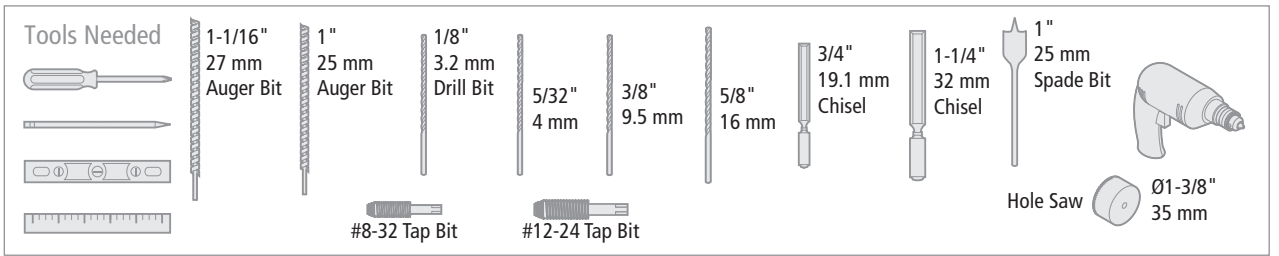
Functions	1DT, 2DT		Through Door	Through Door
	EX	IN		
YD	EX	IN	•	•
RD, WD	EX	IN	•	•
N, NX, NXEL, NXEU	EX	IN	•	•
L, LB, LT, LEL, LEU	EX	IN	•	•
H	EX	IN	•	•
C, CHR, G, IND, INL, S, W, B7, TWEL, TWELU, WEL, WEU	EX	IN	•	•
AD	EX	IN	•	•
AB, AT, B, BA, BW, H, T, TA, TD, TDEL, TDEU	EX	IN	•	•
A, D, R, RRB, B5, DEL, DEU	EX	IN	•	•

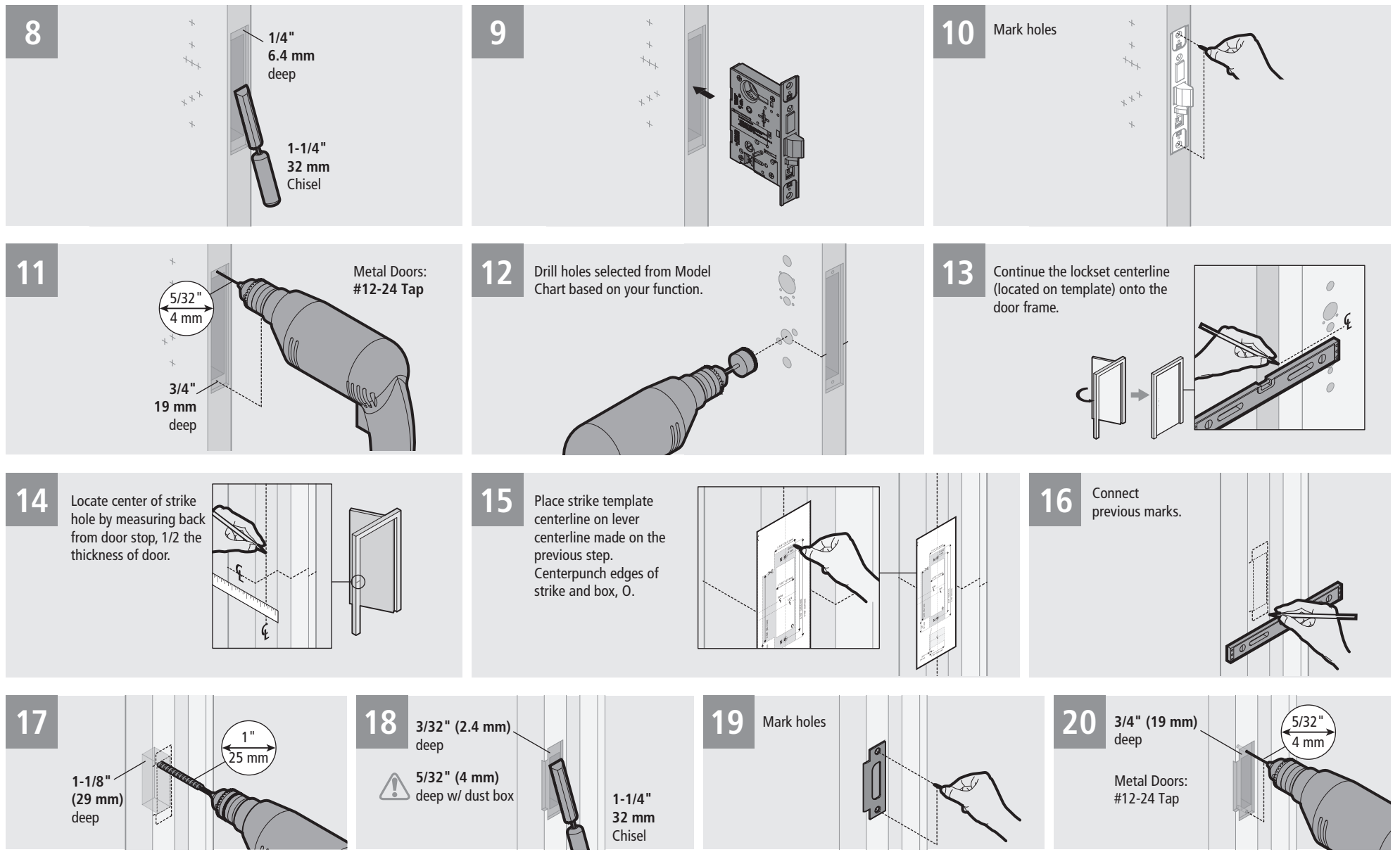
Holes	*M & N forged trim (2)		Through Door	Through Door
	EX	IN		
A	EX	IN	•	•
B	EX	IN	•	•
C	EX	IN	•	•
D	EX	IN	•	•
E	EX	IN	•	•
F	EX	IN	•	•
G	EX	IN	•	•
H	EX	IN	•	•
J	EX	IN	•	•
J&K	EX	IN	•	•

Template Holes
 ⚠ Not all holes are required, reference this chart & notes on second page.

*M & N forged trim (2)
 *J trim (1)
 #Cylinder (1)
 High security cylinder (1)
 *H, R, & S trim thumb turn (2)
 Emergency key/thumb turn access (1)
 ††Trim mounting (2)
 †Lever (1)
 *H & R trim visual indicator (2)
 ◊Visual Indicator Thumb Turn

*† †† ◊ See Notes on second page.





* For trim outside only functions (such as ZD and ZR) and trim inside only functions (such as XD and XR), prepare surface mount trim holes on the trim side of the door as needed.
 † For 1DT, drill 7/64 in. (11 mm) holes halfway into the door at the centerpoints indicated.
 ‡ To qualify for the UL 437 high security listing, use the M escutcheon and the 1E7J4 cylinder. The 1E7K4 cylinder is available for use with either M trim or sectional trim, but does not qualify for the UL 437 high security listing. This option is not available for H and HJ function locks.
 †† Because these holes pass through the mortise pocket, it is recommended that each hole be drilled separately rather than straight through.
 ◊ Template holes 'J' & 'K' are not needed for trim styles J⁵ & M⁴ visual indicator thumb turn trim.

