

Concealed Vertical Rod Device 2700 & FL2700 Series x 1700 & 4900 Trim Wood Door

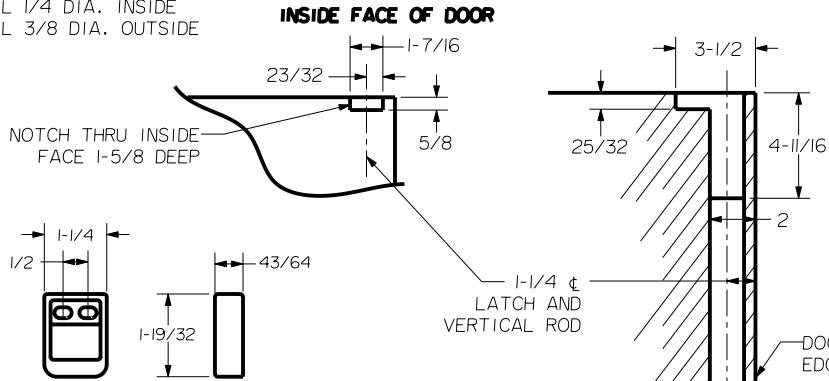
Trim Series: Exit Only, 1700, 4900
Device Series: 2700, FL2700
Strike: S519, S460



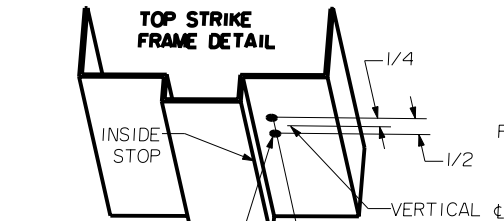
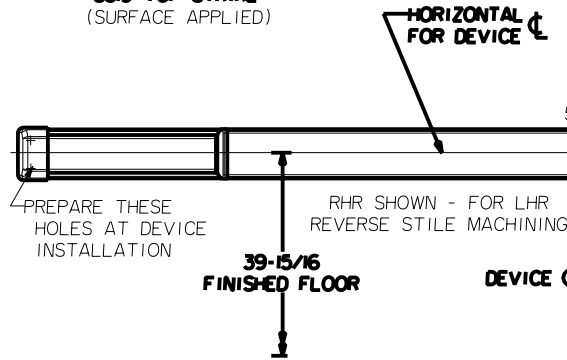
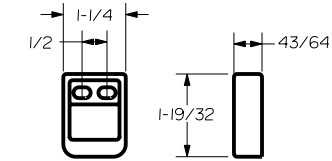
For online instructions, assistance or warranty information:
Call 1-800-392-5209 or visit <https://dhwsupport.dormakaba.com/hc/en-us>

SEX BOLT MACHINING

DRILL 1/4 DIA. INSIDE
DRILL 3/8 DIA. OUTSIDE

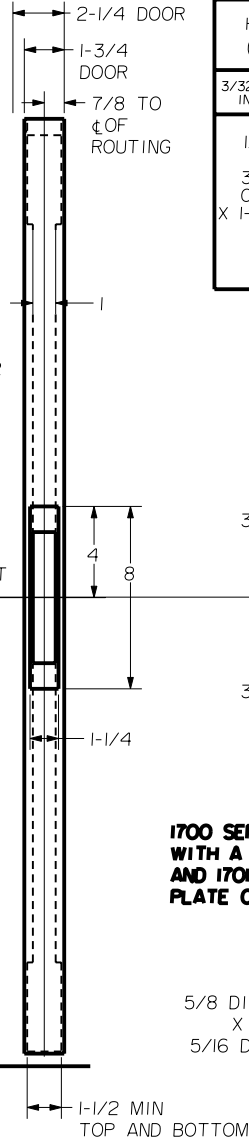


S519 TOP STRIKE (SURFACE APPLIED)



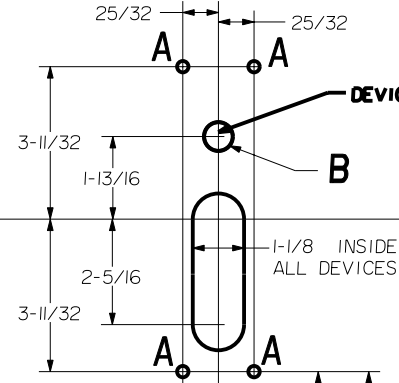
DRILL AND TAP FOR #10-24 SCREWS

ACCOMMODATES 1/4 TO 3/4 GAP
1/2 MAX. THICK DOOR EDGING NOT PROVIDED

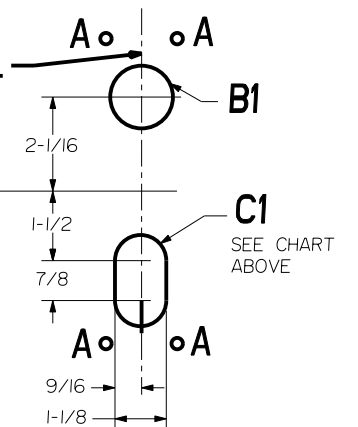


HOLE A (4) PLS	DEVICES	TRIMS	HOLE B	HOLE B1	HOLE C1
3/32 DIA. PILOT INSIDE ONLY	2701.FL2701	EXIT ONLY	NO	NO	NO
1/4 DIA INSIDE 3/8 DIA OUTSIDE X 1-3/8 DEEP	2701.FL2701	1701,4901	5/8 DIA INSIDE ONLY	1-3/8 DIA OUTSIDE ONLY	SLOT OUTSIDE ONLY
	2702.FL2702	1702,4902			
	2703.FL2703	1703,4903			
	2705.FL2705	1705			
	2708.FL2708	4908,V4908			
2714.FL2714	4914	NO	NO		
2715.FL2715	1715				

DEVICE SIDE MACHINING



TRIM SIDE MACHINING



1700 SERIES TRIM WITH A OR C GRIP ONLY AND 1701 COVER PLATE ONLY

5/8 DIA OUTSIDE X 1 DEEP
5/16 DIA INSIDE

FOR 1700 SERIES TRIM WITH B GRIP ONLY

NOTE: "LETTER" AT END OF TRIM MODEL NO. DESIGNATES LEVER OR GRIP STYLE. EXCEPT AS NOTED, LEVER OR GRIP STYLE HAS NO EFFECT ON STILE MACHINING.