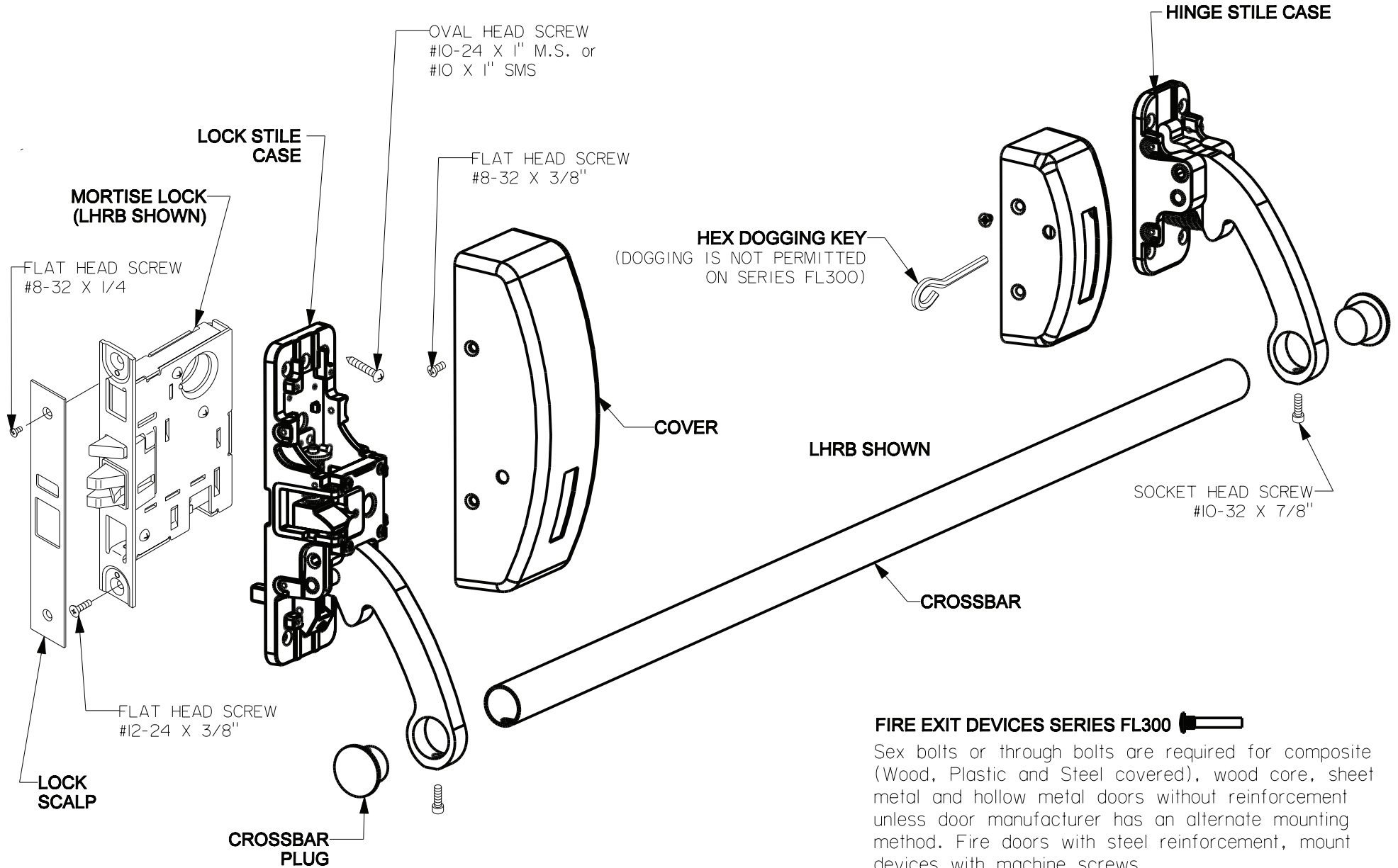


Installation Instructions Mortise Exit Device Series 300 & FL300

For online instructions, assistance or warranty information:
Call 1-800-392-5209 or visit <https://dhwsupport.dormakaba.com/hc/en-us>



FIRE EXIT DEVICES SERIES FL300

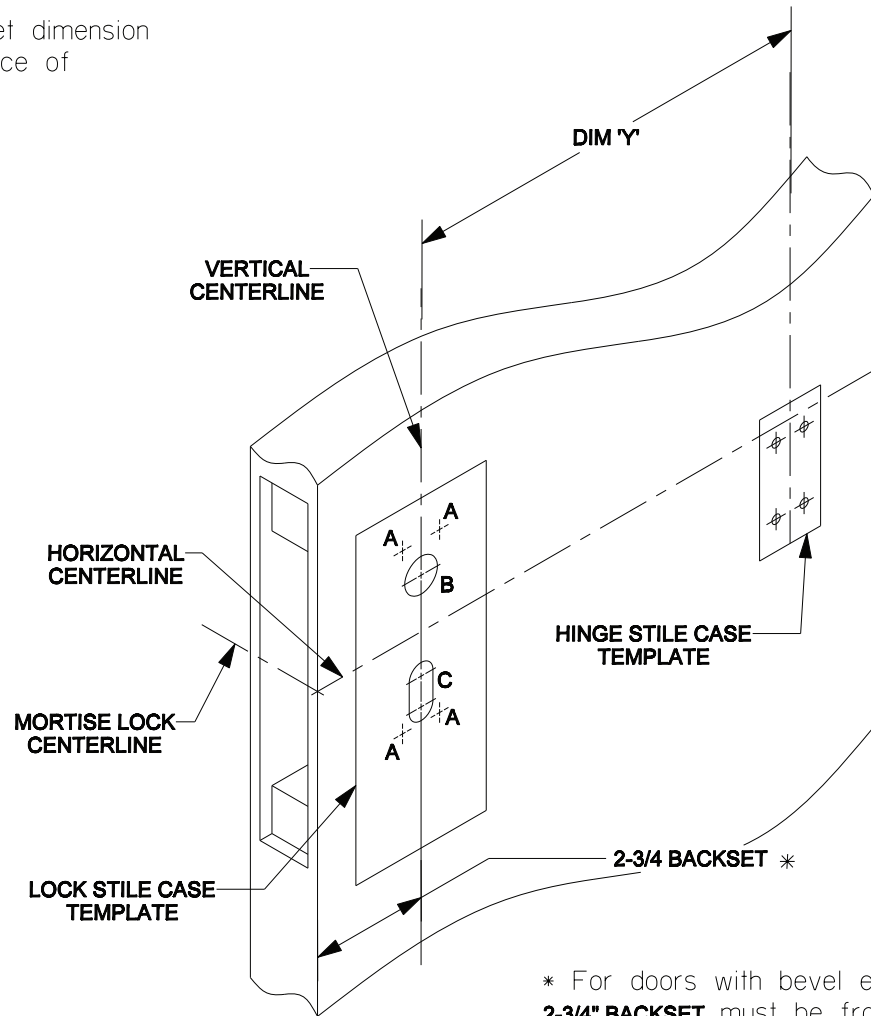
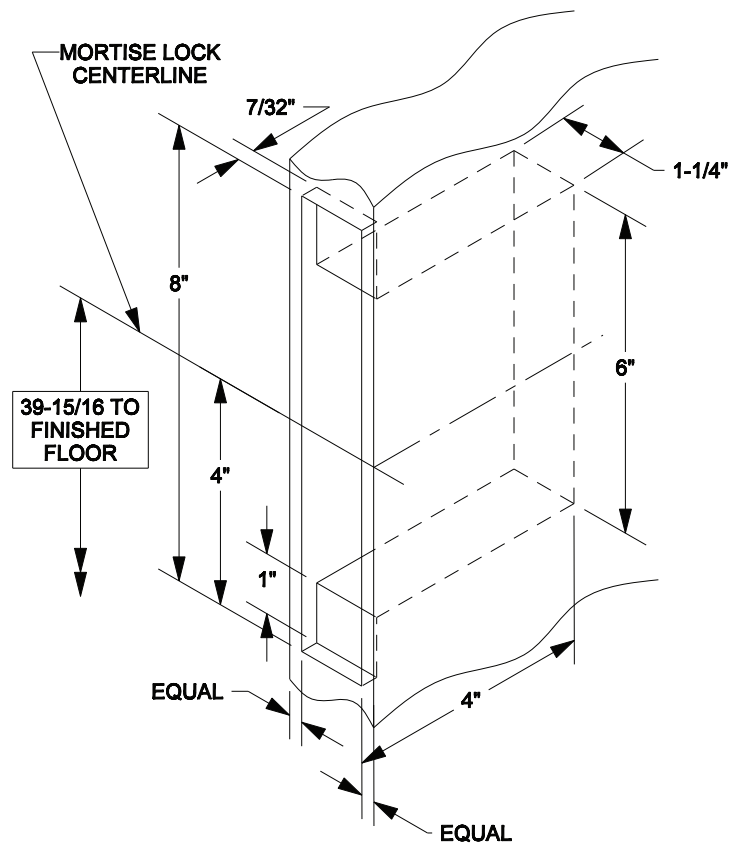
Sex bolts or through bolts are required for composite (Wood, Plastic and Steel covered), wood core, sheet metal and hollow metal doors without reinforcement unless door manufacturer has an alternate mounting method. Fire doors with steel reinforcement, mount devices with machine screws

1 DOOR PREPARATION

1. Circle the **TRIM NUMBER**. (if specified) at various locations on the **TRIM TEMPLATE**.
2. If door is not pre-machined for mortise lock, mortise the door according to **MORTISE LOCK MACHINING DETAIL**.
3. Extend mortise lock **HORIZONTAL CENTERLINE** on inside face of door and also outside face of door if trim is specified.
4. Mark **VERTICAL CENTERLINE** at lock side using 2-3/4" Backset dimension (If trim is specified mark vertical centerline on the outside face of door using same 2-3/4" dimension)

5. Mark vertical centerline on hinge side using dimension 'Y' for door opening. To determine dimension 'Y' see **(STEP 2)**
6. Tape Lock Stile Case and Hinge Stile Case Template (and Trim Template if Trim specified) to the door so that the centerlines on the Template line up with centerlines on the door. Mark centers and drill the required holes as indicated on the Template.
7. Install mortise lock into door. Apply strike to frame with screws provided.

MORTISE LOCK MACHINING DETAIL



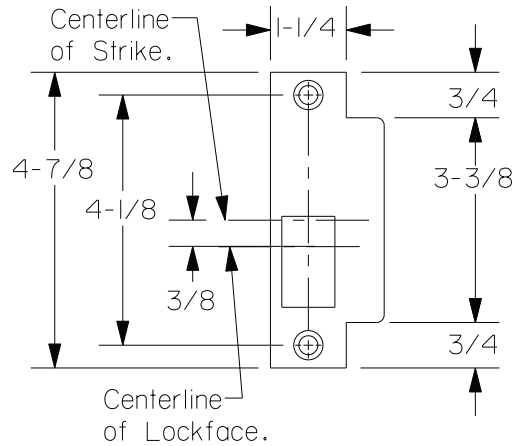
* For doors with bevel edge, **2-3/4" BACKSET** must be from the center of door edge.

STRIKE PREPARATION

S982 STRIKE

Curved Lip Strike

LHRB Shown



NOTE:
OPPOSITE HAND STRIKE REQUIRED
FOR COMPLETE REVERSIBILITY

Note: Strike mounting screws
- #12-24 Flat Head M.S.

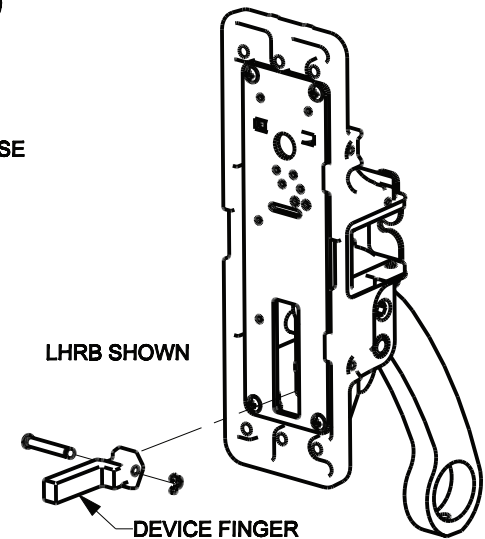
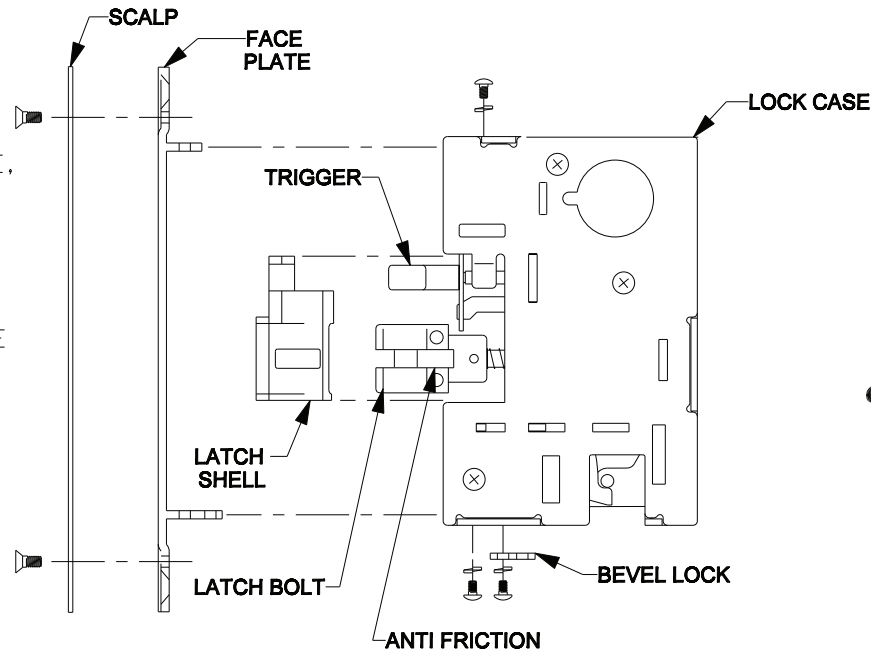
INSTRUCTIONS TO CHANGE HAND

TO CHANGE LOCK HAND:

1. Remove FACE PLATE and BEVEL LOCK by removing 3 screws.
2. Remove LATCH SHELL from LOCK CASE, rotate LATCHBOLT and TRIGGER 180°. Tip ANTI_FRICTION in the LATCHBOLT forward and insert LATCH SHELL into the LOCK CASE.
3. Insert FACE PLATE into the LOCK CASE and secure it with 2 screws and lock washers as shown.
4. Position BEVEL LOCK for the required setting as listed below and attach it with a screw and lock washer.

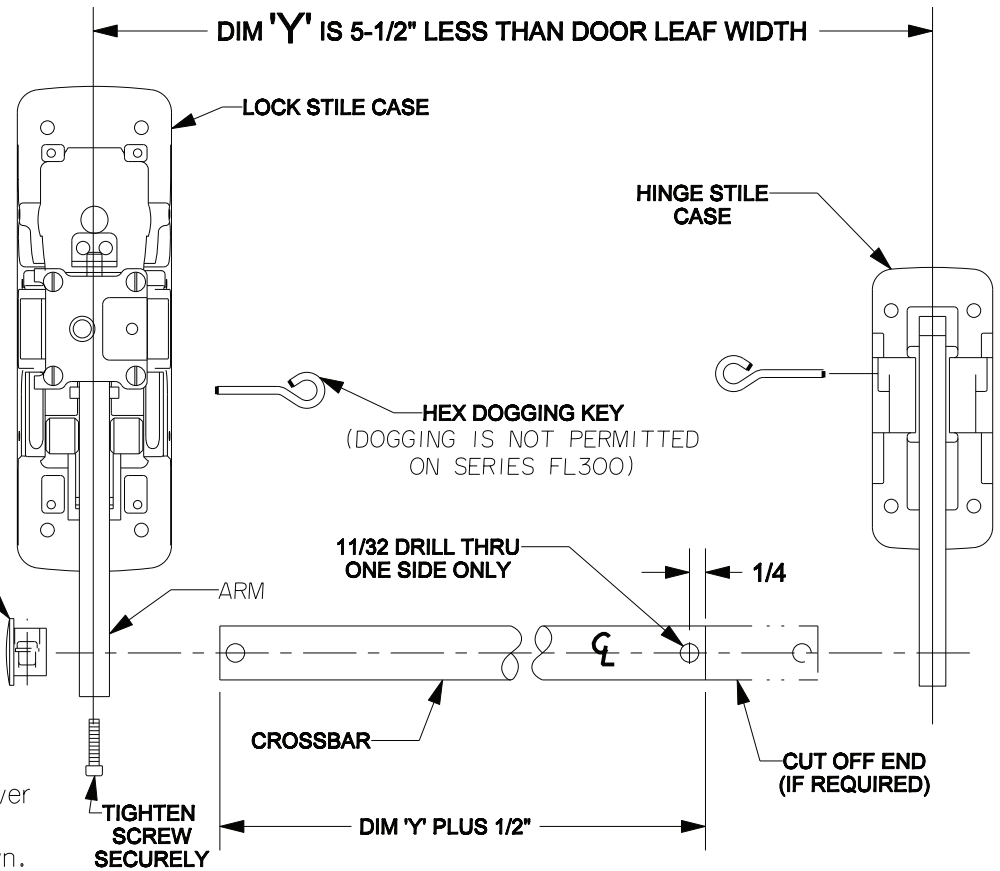
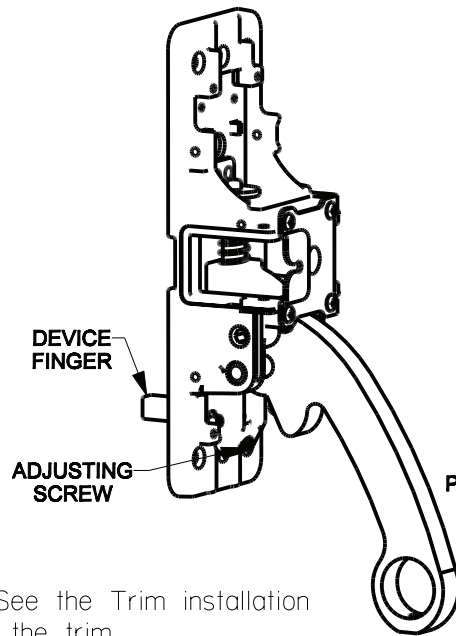
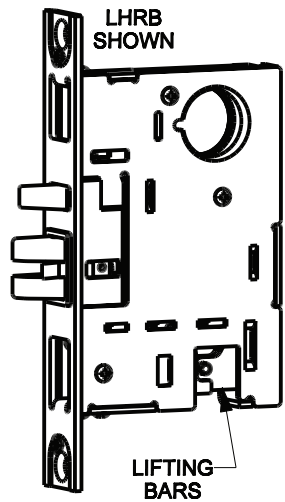
BEVEL LOCK SETTINGS:

LHRB - Left Hand Reverse Bevel
RHRB - Right Hand Reverse Bevel
F - Flat Face



- 1) Remove Device Finger by removing Retaining ring and pivot pin.
- 2) Rotate trim finger 180° and Reassemble with pivot pin and retaining ring as shown.

2 APPLY DEVICE



NOTE: If Trim is specified: See the Trim installation instructions packaged with the trim.

- Lock Stile Case Mounting - Undog (when applicable) and remove cover
DEVICE WITH TRIM - See Trim instructions
CYLINDER ONLY - Install Mortise Cylinder into mortise lock as shown. Check key operation and secure cylinder in place by tightening Cylinder Set Screw in lock case. With device finger below the lifting bars, mount Lock Stile Case to the door with 4 screws.
EXIT ONLY - With device finger below the lifting bars, mount Lock Stile Case to the door with 4 screws.
- Hinge Stile Case mounting - Undog (when applicable) and remove cover and mount it with 4 screws.
- CHECK OPERATION** Latchbolt should be fully extended when crossbar is in extended position. Latchbolt should be fully retracted when crossbar is depressed or device is dogged down. If above condition does not exist, adjust device finger with adjusting screw.
- Attach covers to lock stile case and hinge stile case. Attach lock scalp to lock faceplate.
- Check **CROSSBAR** length per illustration. Cut **CROSSBAR** if required and install per illustration. Tighten screws.

CYLINDER ONLY INSTALLATION

