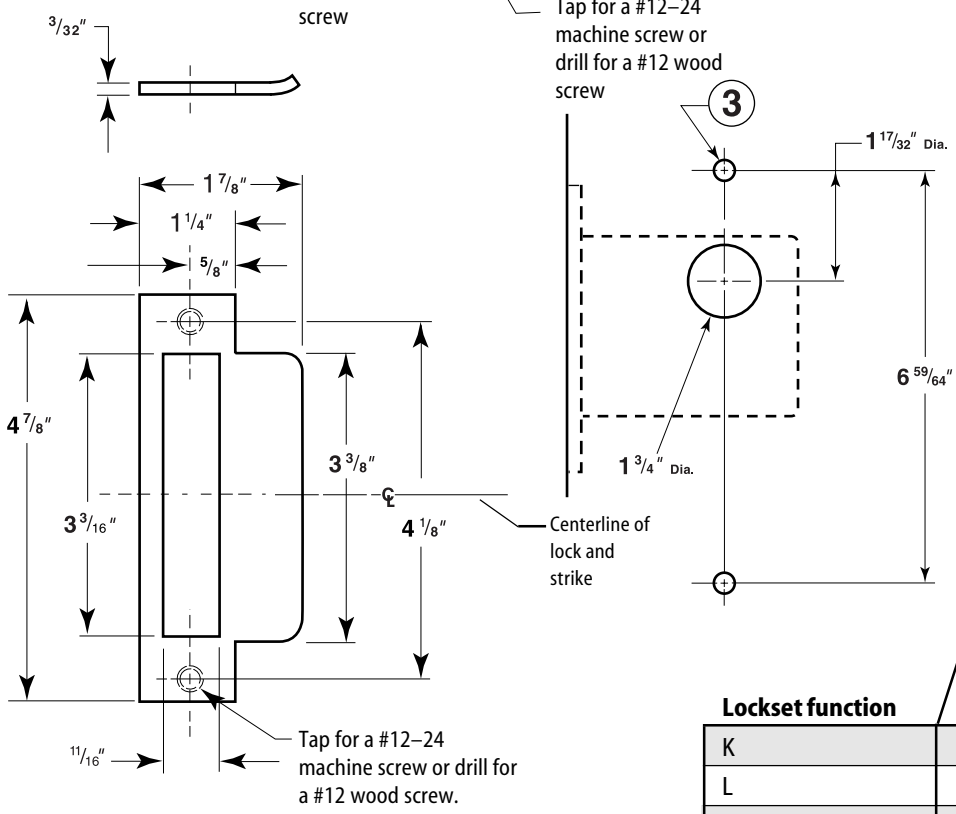
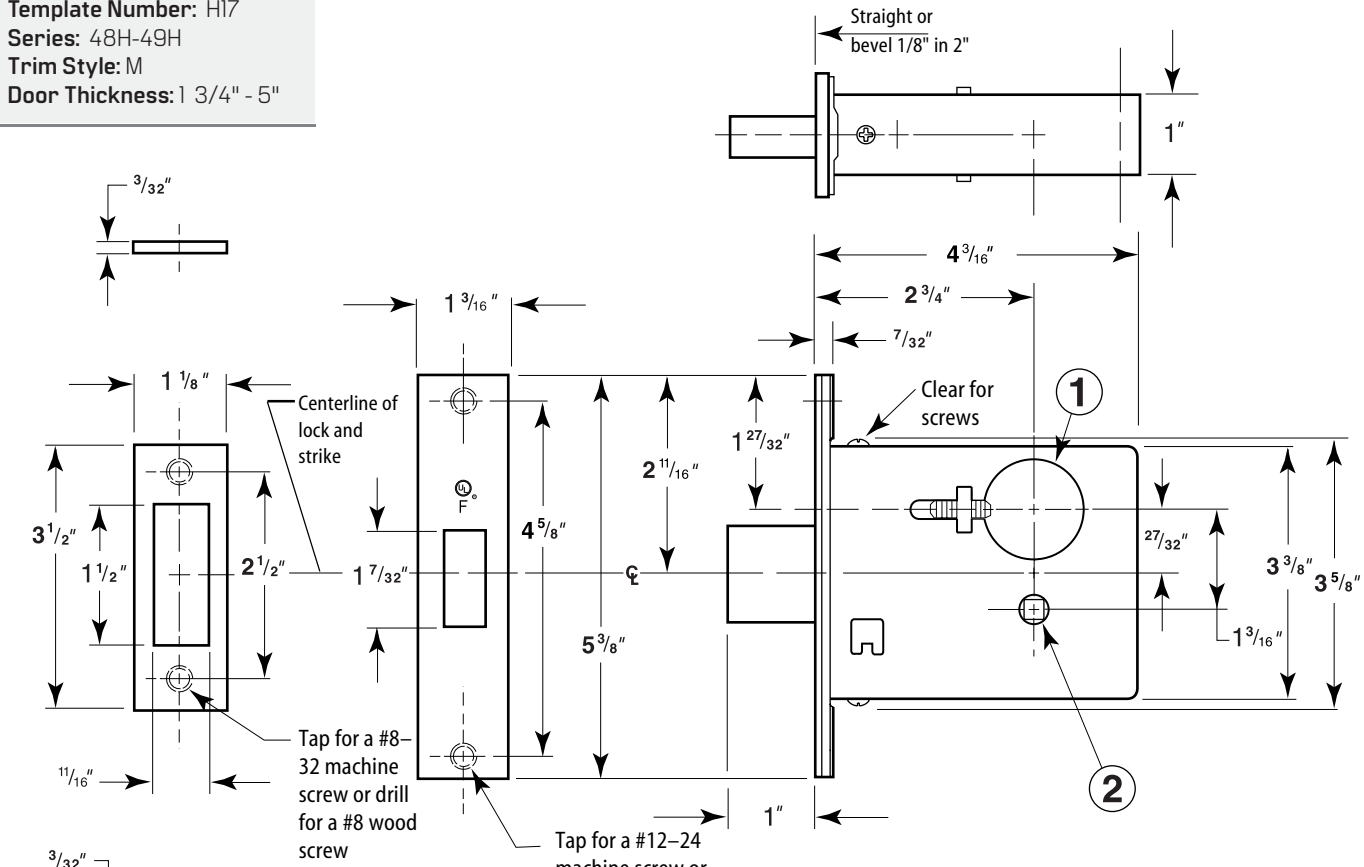


Installation Specifications for 48H-49H Mortise Locks



dormakaba Group

Template Number: HI7
Series: 48H-49H
Trim Style: M
Door Thickness: 1 3/4" - 5"



DO NOT SCALE

Notes

A 1 3/4" diameter cylinder hole is required for 1E7J4 & 1E7K4 high security cylinders on 49H when M trim is not used.

1 See Template H11 for complete strike and strike box specifications.

Hole pattern chart

Lockset function	Inside		Outside	Trim
	①	②	①	③
K	■	■	■	■
L	■	■	■	■
M	■	■	■	■
R	■	■	■	■

	Cylinder A 1 1/4" dia.	Turn knob 1/2" dia.	Cylinder A 1 1/4" dia.	49H M trim 9/16" dia. (2 holes)
①	■	■	■	■
②	■	■	■	■
③	■	■	■	■