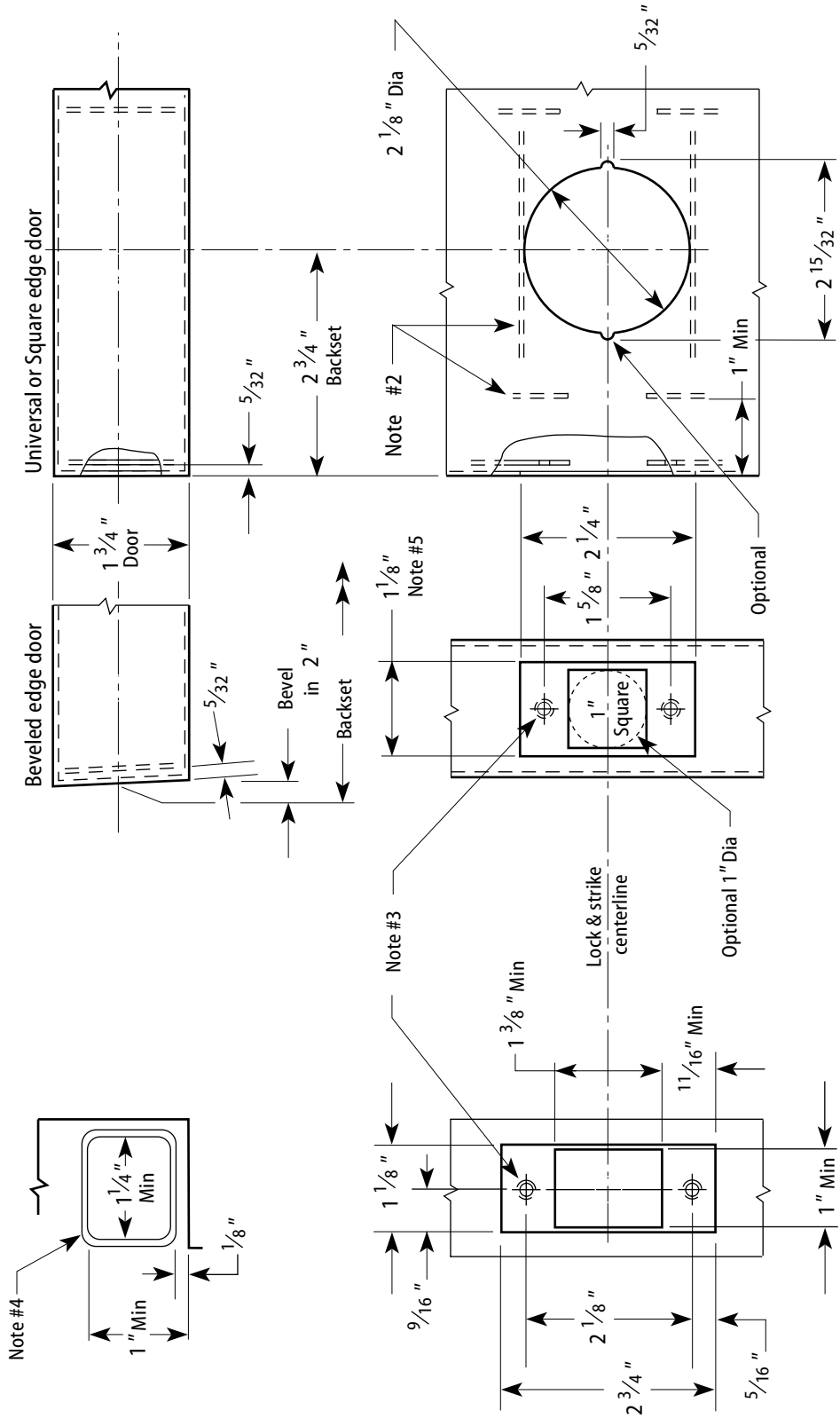


Installation Specifications for 73T & 83T Tubular Deadbolt Locks with Standard Strike

Template Number: T08
Series: 72T/73T & 82T/83T
Backset: 2 3/8" & 2 3/4"
Door Thickness:
72T/73T: 1 3/8" - 2 1/8"
82T/83T: 1 3/8" - 3"

Notes

- 1 Allow plus tolerance for clearance per ANSI A115.2.
- 2 Lock and latch case support by door manufacturer.
- 3 Prepare for a #8-32 screw.
- 4 Plaster guard by door manufacturer.
- 5 For 83T deadbolts, a 1" latch face is available.



2 3/4" Backset Door Preparation

DO NOT SCALE

Frame Preparation