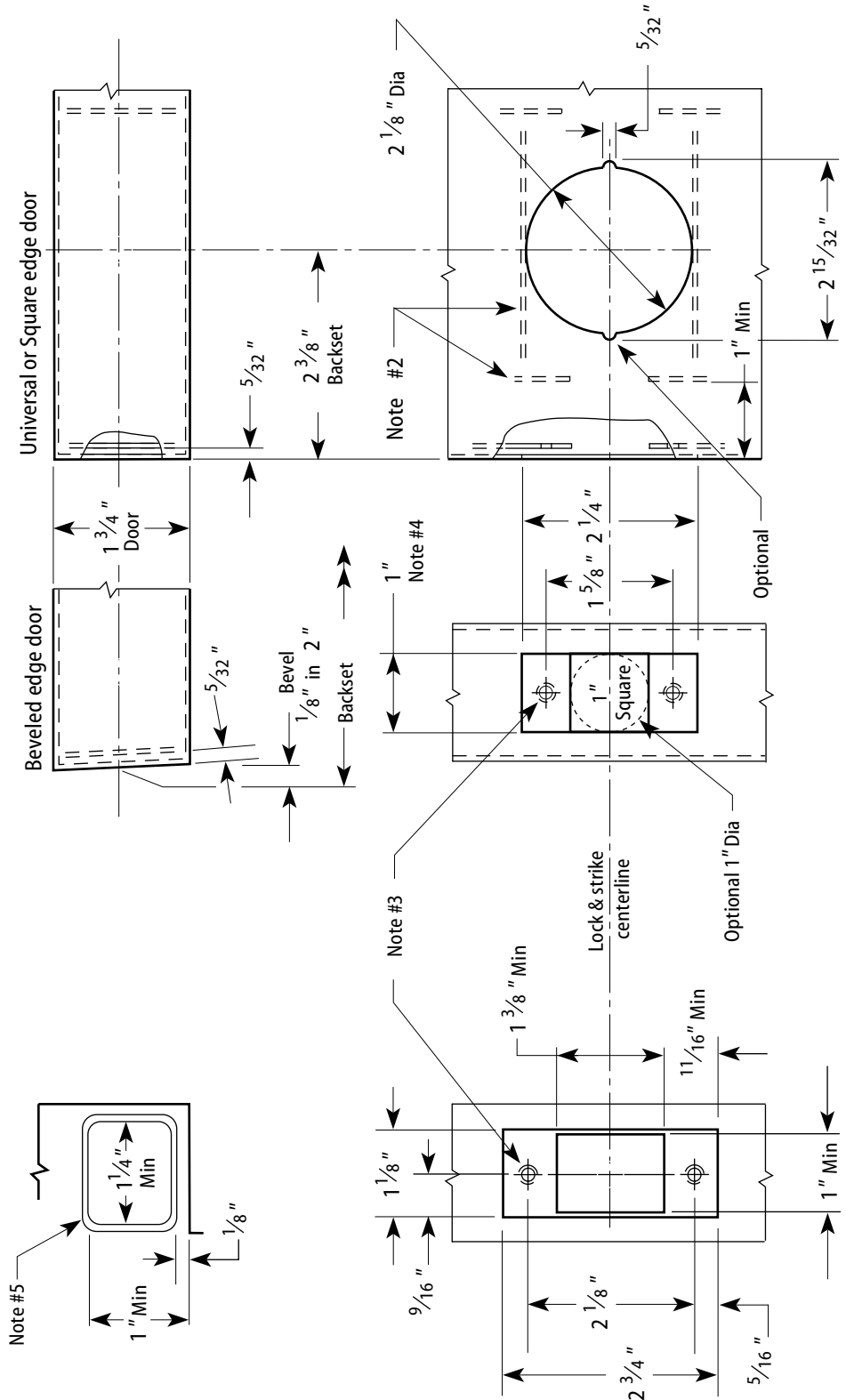


Installation Specifications for 72T & 82T Tubular Deadbolt Locks with Standard Strike

Template Number: TO1
 Series: 72T & 82T
 Backset: 2 3/8"
 Door Thickness:
 72T: 13/8" - 2 1/8"
 82T: 13/8" - 3"

Notes

- 1 Allow plus tolerance for clearance per ANSI A115.2.
- 2 Lock and latch case support by door manufacturer.
- 3 Prepare for a #8-32 screw.
- 4 For 82T deadbolts, a 1 1/8" latch face is available.
- 5 Plaster guard by door manufacturer.



2 3/8" Backset Door Preparation

DO NOT SCALE

Frame Preparation