

Strike Specifications for 6K, 8K, 9K Cylindrical Locks

Template No: K21
Series: 6K, 8K, 9K

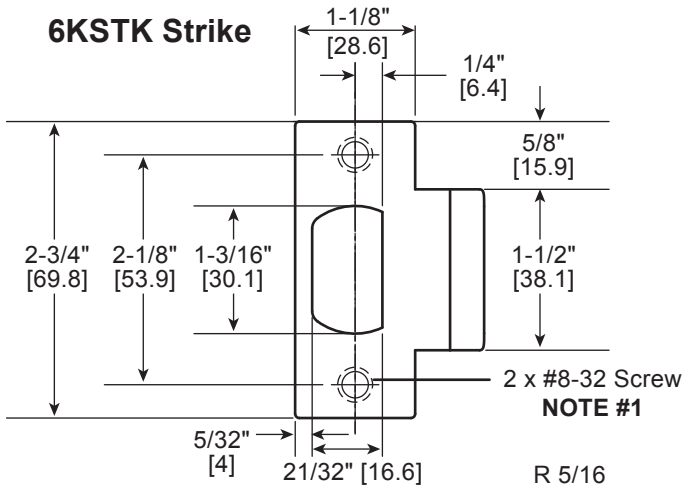


For online instructions, assistance or warranty information:
Call 1-800-392-5209 or visit <https://dhwsupport.dormakaba.com/hc/en-us>

NOTES

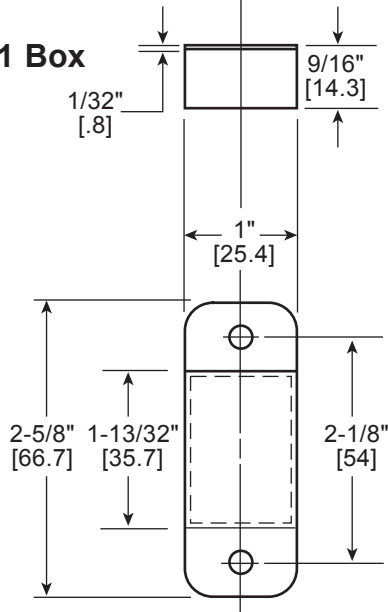
- 1 Prepare for a #8-32 machine screw or for a #8 wood screw (combination screw supplied).
- 2 Prepare for a #12-24 machine screw or for a #12 wood screw (combination screw supplied).
- 3 Allow plus tolerance for clearance per ANSI A115.2.

6KSTK Strike

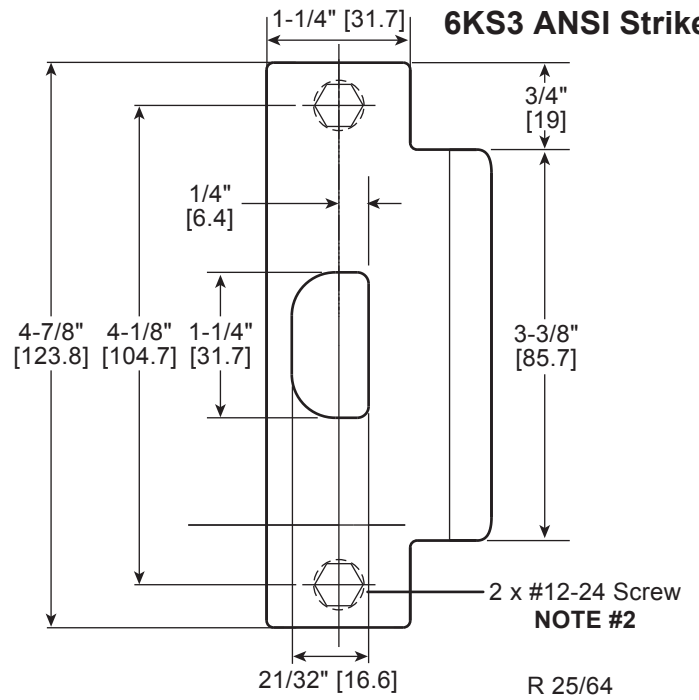


NOTE #1

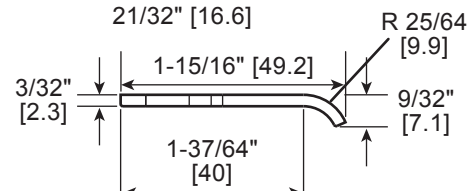
8KS1 Box



6KS3 ANSI Strike



NOTE #2



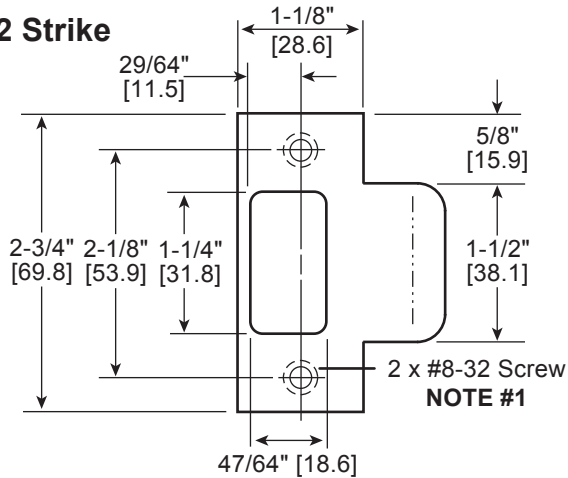
30HS4 Box

Not to scale 1:1.
Measurements are for reference only.
Not a drilling template.

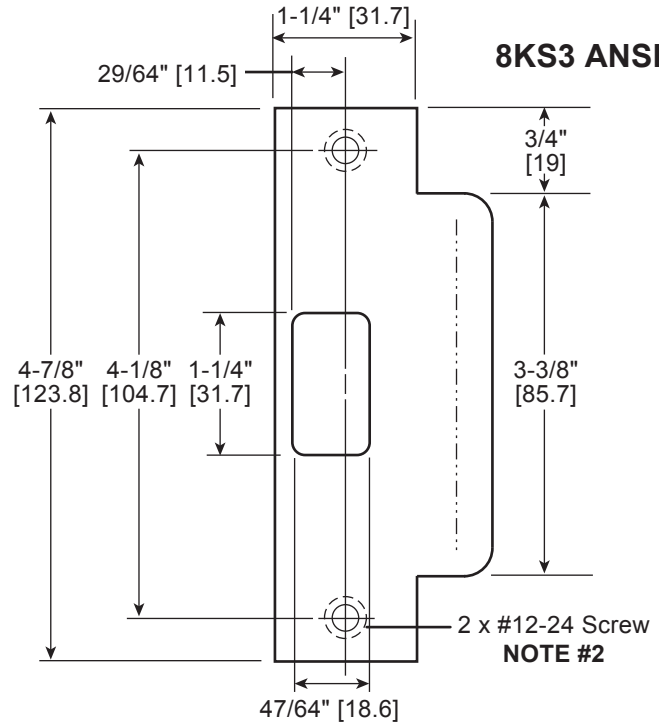
NOTES

- 1 Prepare for a #8-32 machine screw or for a #8 wood screw [combination screw supplied].
- 2 Prepare for a #12-24 machine screw or for a #12 wood screw [combination screw supplied].
- 3 Allow plus tolerance for clearance per ANSI A115.2.

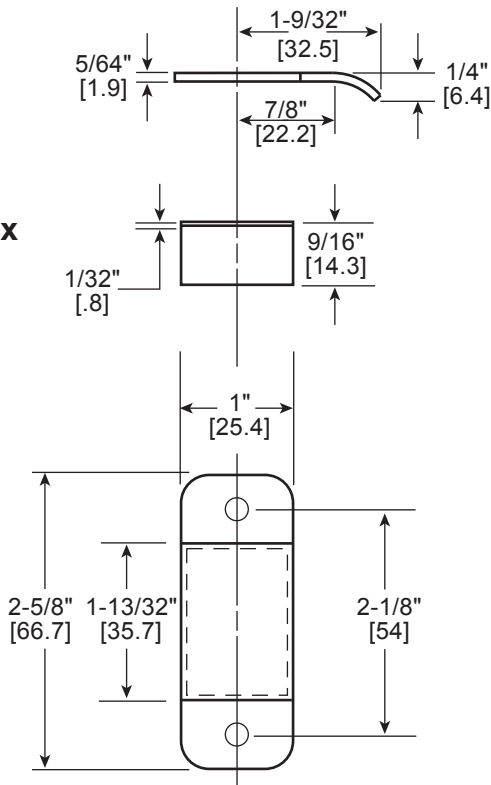
8KS2 Strike



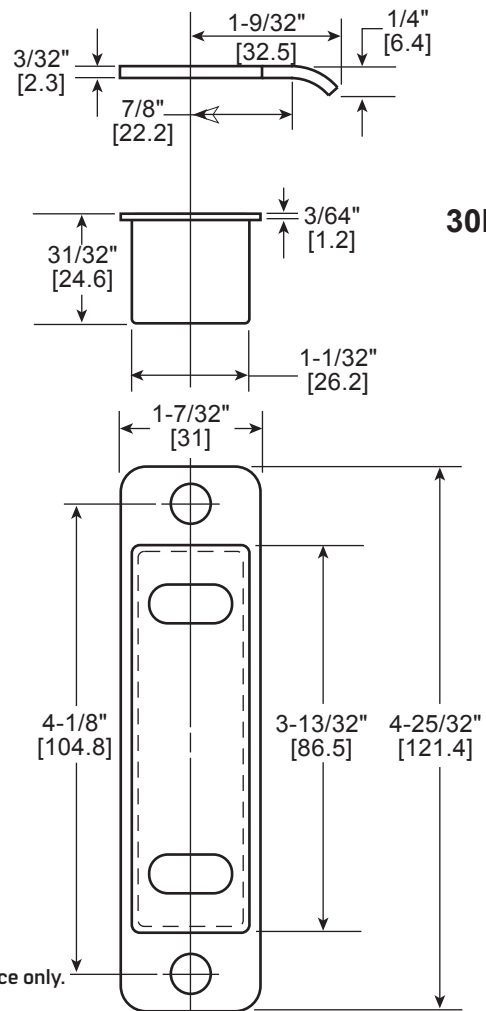
8KS3 ANSI Strike



8KS1 Box



30HS4 Box



Not to scale 1:1.
Measurements are for reference only.
Not a drilling template.