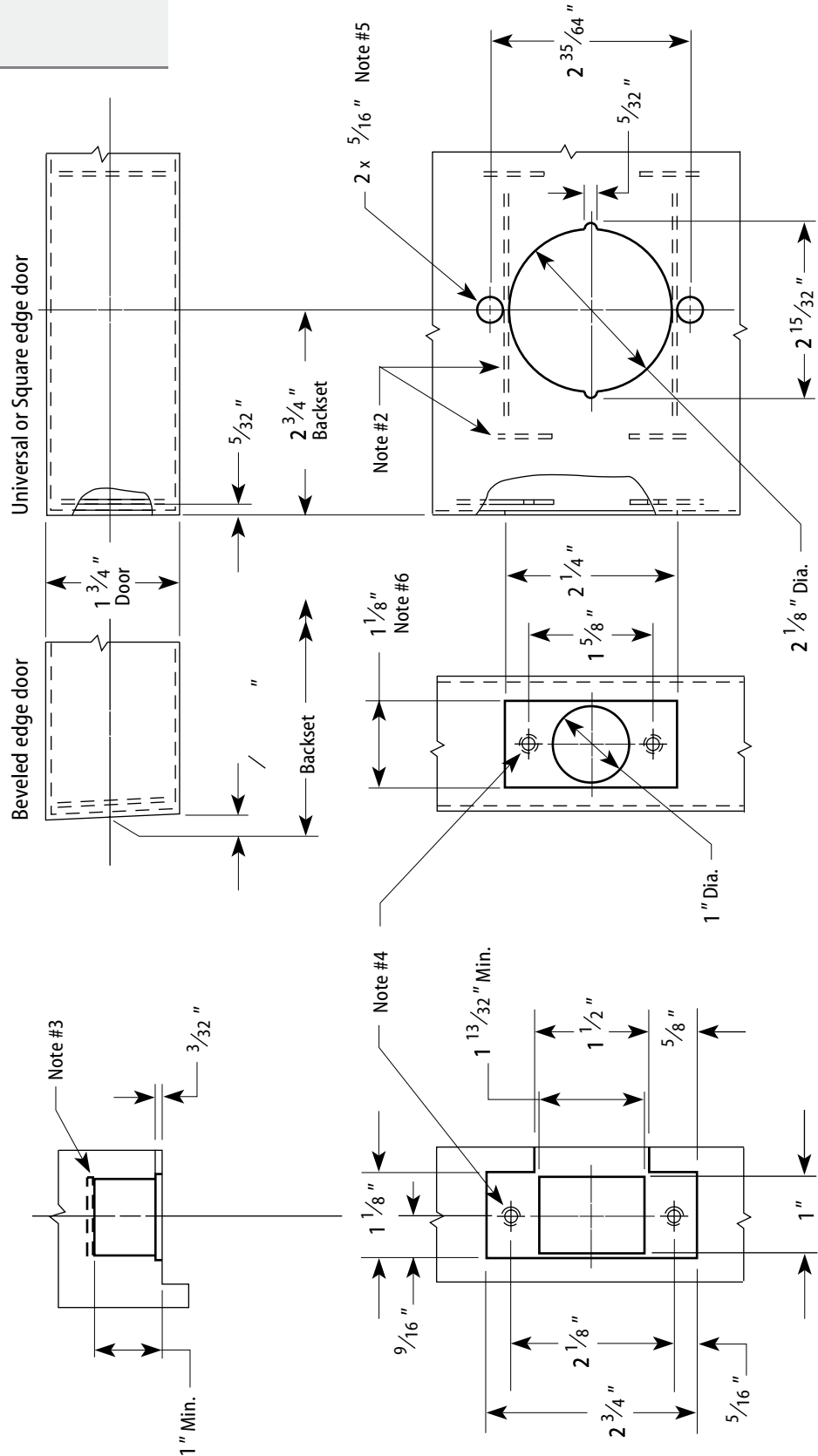


Door & Frame Preparation for 63K, 73KC, 83K, & 93K Cylindrical Locks

Template Number: K08
Series: 63K, 73KC, 83K, 93K
Backset: 2 3/4"
Strike: Small ANSI strike [STK]
Door Thickness: 1 3/4"

Notes

- 1 Allow plus tolerance for clearance per ANSI A115.2.
- 2 Lock and latch case support by door manufacturer.
- 3 Plaster guard by door manufacturer.
- 4 Prepare for a #8-32 screw.
- 5 For 73KC and 93K only! The 63K and 83K "C" style roses will **not** cover these holes.
- 6 For 63K and 73KC only, a 1" latch face is available.
- 7 For 73KC locks, use the KD303 drill jig to ensure that through-bolts and levers are properly aligned.



Frame Preparation

DO NOT SCALE

2 3/4" Backset Door Preparation