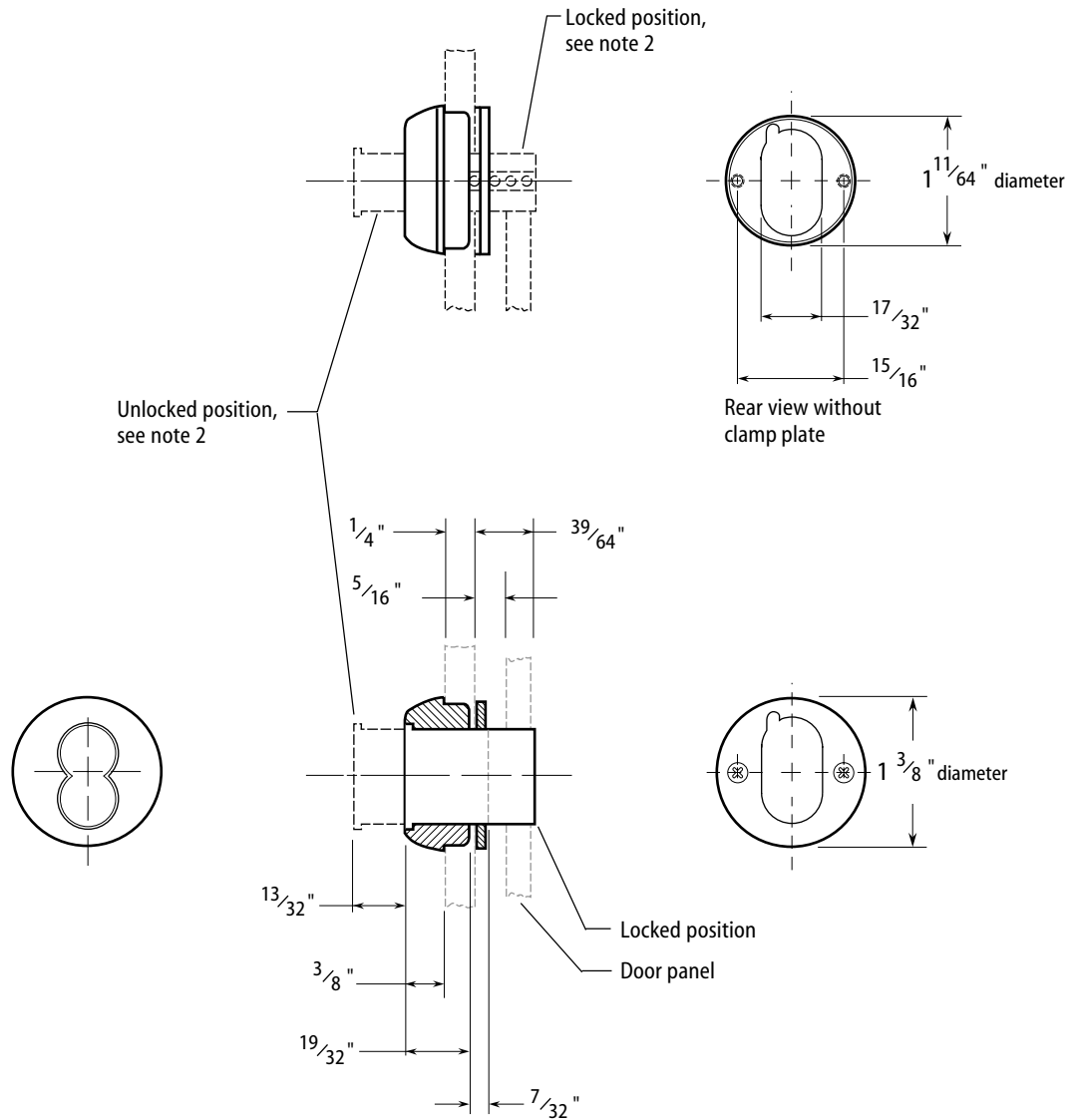


# Installation Specifications for 4S73 Sliding Glass Door Cylinder

Template Number: S01  
Series: 4S



## Note

- 1 Use type 1C-Fed KRL core or 6C core for standard operation with key removable in either the locked or the unlocked position. Use type 1C-Fed KRT or 6CT core for standard operation with key removable only in the locked position. See T61980 *Installation Instructions for 1C-FED Cores used in 4S Sliding Glass Door Locks*, or T61981 *Installation Instructions for 6C Cores used in 4S Sliding Glass Door Locks*.