

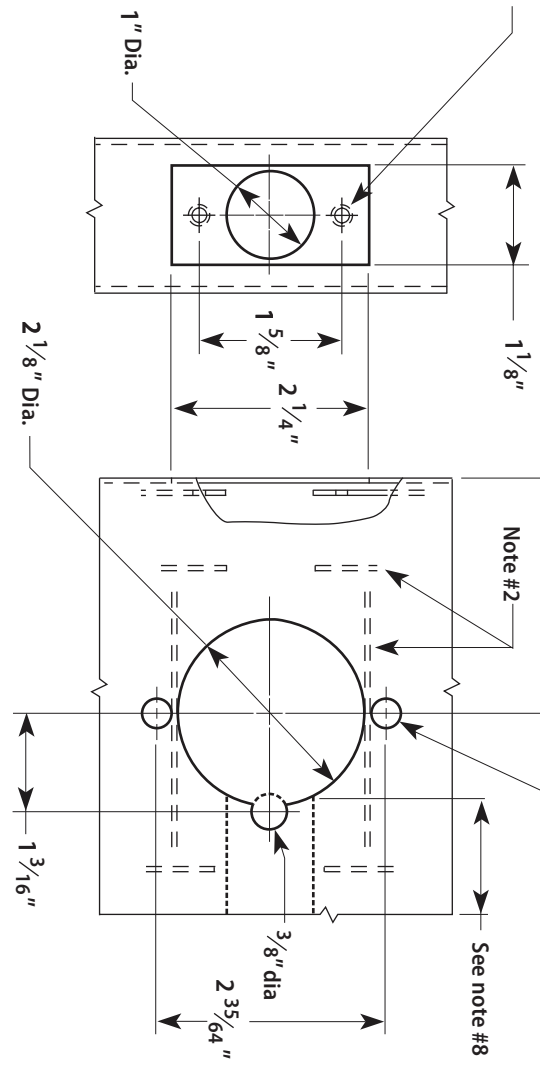
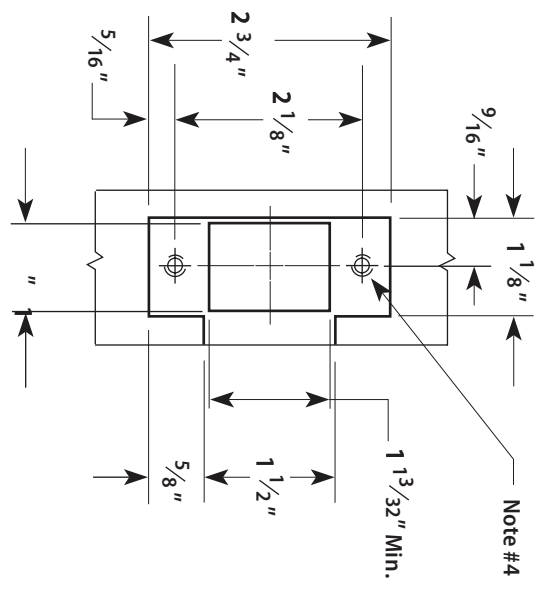
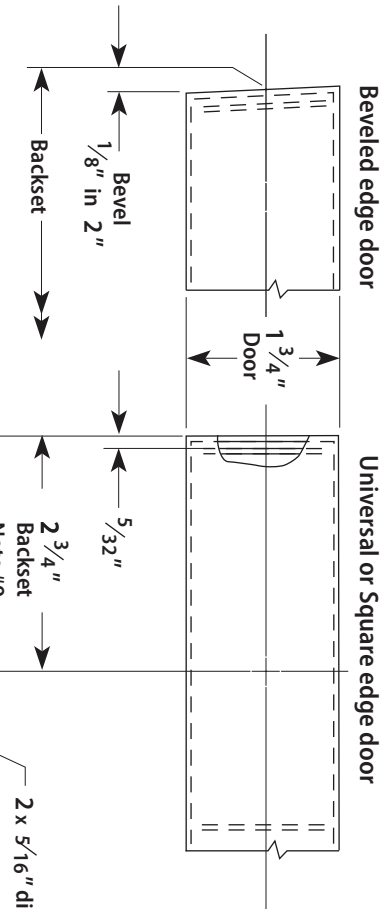
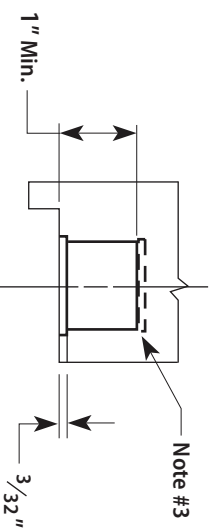
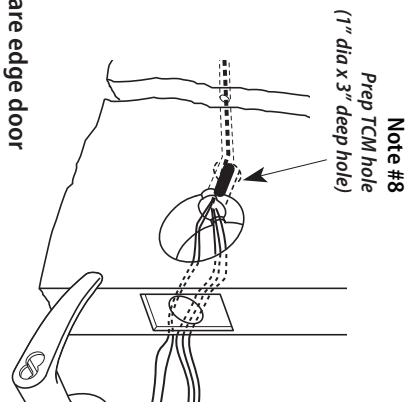
Installation Specifications for 83KW & 93 KW Electrified Cylindrical Locks

Template Number: W20
Series: 83KW, 93KW
Strike: Small ANSI strike (STK)

Door Thickness: 1 3/4", 2 1/4"
*Template not to scale

- Notes**
1. Allow plus tolerance for clearance per ANSI A115.2.
 2. Lock and latch case support by door manufacturer.
 3. Plaster guard by door manufacturer.
 4. Prepare for a #8-32 screw.
 5. When a strike box is used, 9/64"
 6. For 93KW locks, use the KD303 drill jig to ensure that through-bolts and levers are properly aligned.

7. For all electrified products that require concealed wiring, a 3/8" diameter raceway through the door is required.
8. Extend the latch bore to provide room for TCM connections. (1" dia x 3" deep)
9. For 3-3/4" and 5" backsets, position the vertical centerline of the lock appropriately.



Frame Preparation

2 3/4" Backset Door Preparation