

Installation Specifications for 93KQ Cylindrical Locks with Small Strike



dormakaba Group

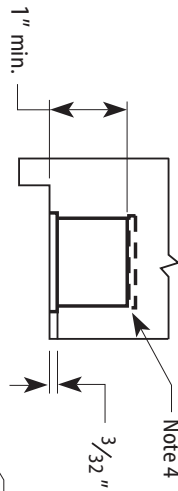
Template Number: Q01
Series: 93KQ
Backset: 2 3/4", 3 3/4", 5"
Trim Style: DV, MS, PH, PM

Door Thickness: 1-3/4" to 2-1/4"
*Template not to scale

Notes

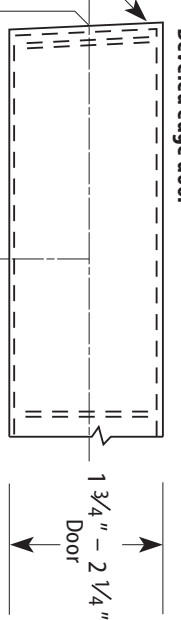
- 1 Also see the Q05 Template—Installation Template for 93KQ Cylindrical Locks.
- 2 Allow plus tolerance for clearance per ANSI A115.5. The general tolerance is $\pm 1/64"$.
- 3 The lock and latch case support are required from the door manufacturer.
- 4 The plaster guard is required from the frame manufacturer.
- 5 Prepare for a #8-32 screw.
- 6 For backsets other than 2 3/4", position the vertical centerline of the lock appropriately.
- 7 Drill the 1" hole 1 3/4" deep.
- 8 Drill the 1" hole 1" deep.

Strike box — overhead view

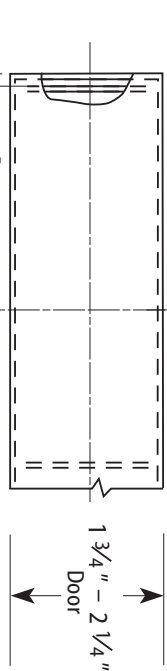


Bevel angle = 1/8" in 2"

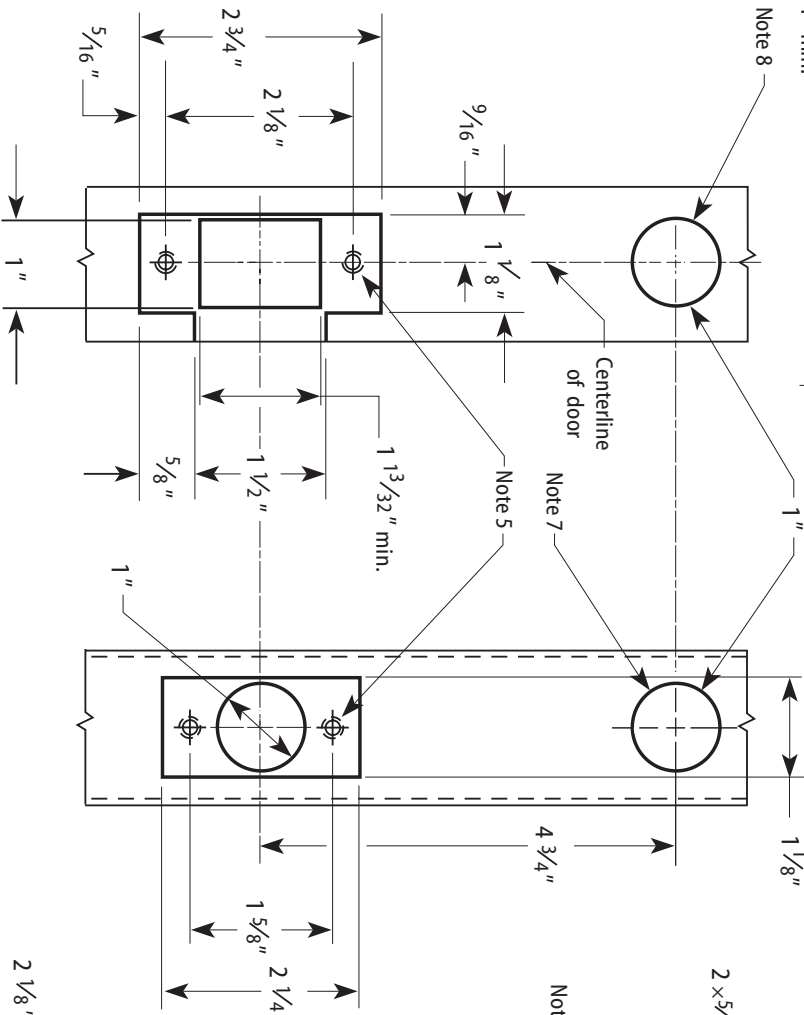
Beveled edge door



Universal or square edge door



Frame preparation



2 3/4" Backset door preparation

