

# Installation Specifications for 83KM/93KM - 85KM/95KM IDH Max Cylindrical Locks with Small Strike

Template Number: W29  
 Series: 45HM  
 Backset: 2 3/4"  
 Trim Style: MS, PH, PM  
 Door Thickness: 1 3/4" to 5"

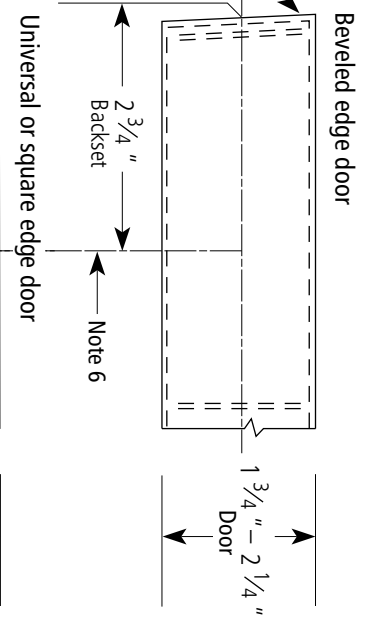


dormakaba Group

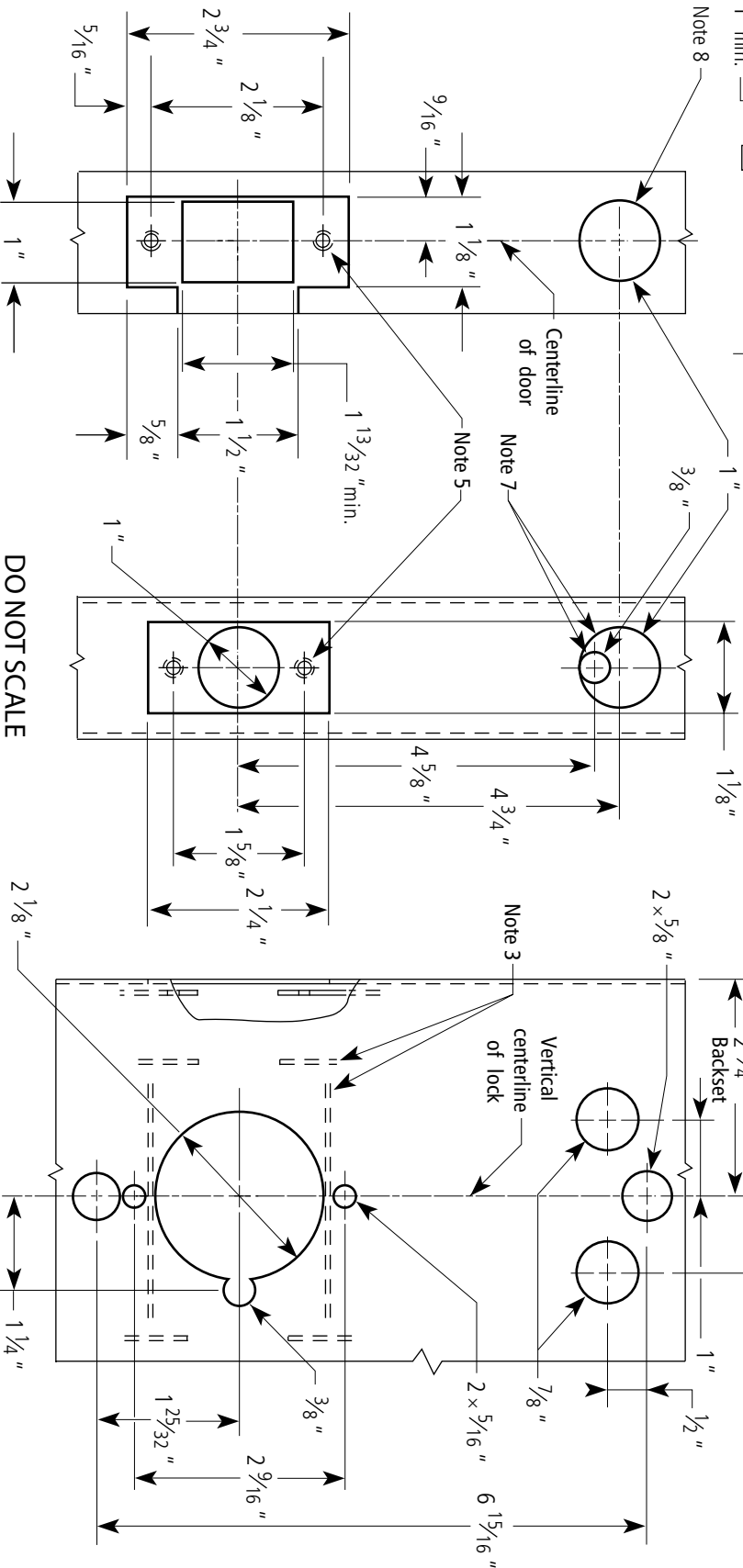
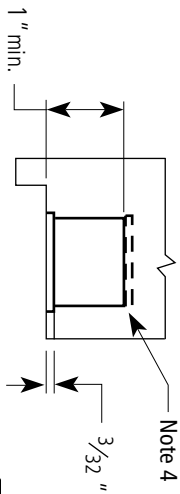
## Notes

- Also see the W16 Template—Installation Template for 83KM/93KM Cylindrical Locks.
- Allow plus tolerance for clearance per ANSI A115.5. The general tolerance is  $\pm 1/64$ .
- The lock and latch case support are required from the door manufacturer.
- The plaster guard is required from the frame manufacturer.
- Prepare for a #8-32 screw.
- For backsets other than 2 3/4", position the vertical centerline of the lock appropriately.
- Drill the 1" hole 1 3/4" deep, drill the 3/8" hole through the door.
- Drill the 1" hole 1" deep.

Bevel angle = 1/8" in 2"



## Strike box — overhead view



Frame preparation

DO NOT SCALE

2 3/4" Backset door preparation