

Installation Instructions

Fail Secure BES-F2164 (Fire Rated) & Fail Safe BES-2364



Spanish and French translations are available on <https://dhwsupport.dormakaba.com/hc/en-us>
 Traducciones al español y francés están disponibles en <https://dhwsupport.dormakaba.com/hc/en-us>
 Des traductions en espagnol et en français sont disponibles sur <https://dhwsupport.dormakaba.com/hc/en-us>

| Standard Parts: |
|---|
| Insert |
| Deadbolt Keeper |
| Deadbolt Plug |
| Deadlatch Ramp (Auxiliary Bolt Bracket) |
| Keeper Sliding Shims: 1/16" (1.5mm) and 1/8" (3.0mm) |
| A Centerline Latch Faceplate and an Offset Latch Faceplate are provided. Both are: 4-7/8" x 1-1/4" (123.8mm x 31.8mm) |
| Trim Plate |
| 12VDC or 12 to 24VAC Cable Connector |
| 24VDC Cable Connector |
| Anti-Tamper Security Screws (2x 12-24) and Bit |
| Mounting Tab Kit (2x tabs, 4x shims and 5x 12-24 screws) |
| Inductive Kickback Suppressor - MOV |

| Accessories: |
|---------------------------------|
| Latch Monitor Switch : BES-F2LM |
| |
| |
| |
| |

| UL 294 Performance Ratings: |
|--|
| Access Control Line Security : Level I |
| Destructive Attack : Level I |
| Endurance : Level IV |
| Standby Power : Level I |
| |

The BES-F2164 fail secure locking mechanism shall only be installed where allowed by the local authority having jurisdiction and shall not impair the operation of the panic hardware or intended operation of the emergency exit.

Wiring Instructions

Use the appropriate wire harness supplied.

12V for 12VDC & 12-24VAC

24V for 24VDC only

Attach the red wire to (+) positive of the power supply.

Attach the black wire to the (-) negative of the power supply.

If using AC power, polarity is not observed.

To meet BHMA A156.31, install the MOV provided across the positive and negative wires or terminals of the harness. The MOV is not polarity sensitive.

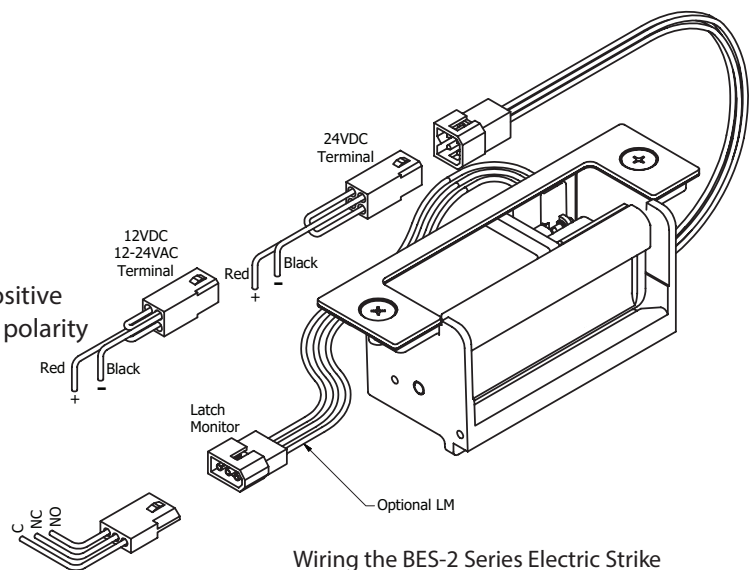
NOTE: If a suppression diode is required for access control, observe proper polarity.

Latch Monitor Wires

Black = Common (C)

Blue = Normally Closed (NC)

Orange = Normally Open (NO)



Wiring the BES-2 Series Electric Strike

These strikes must be connected to a compatible UL Listed Burglary or Access Control Power Supply.

Fail Secure BES-F2164 (Fire-Rated) & Fail Safe BES-2364 Installation Instructions

1. Mount the strike into the frame without the faceplate. Tighten the mounting screws just enough to hold the strike in place; you may need to slide it up-down for adjustment.

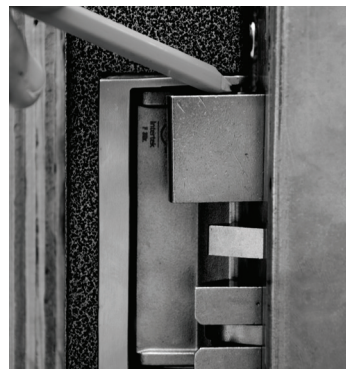


Adjust Deadbolt Keeper:

First, extend the deadbolt and move the door so that deadbolt touches the keeper.

Mark deadbolt limit lines on strike keeper.

Then, open the door and retract the deadbolt. Adjust the deadbolt keeper position so that it aligns with deadbolt limit lines marked on keeper. Move the strike up-down if needed.

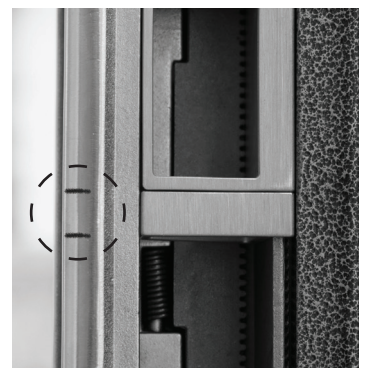


Adjust Deadlatch Ramp:

First, move the door towards the strike so that the deadlatch touches the keeper.

Mark deadlatch limit lines on keeper.

Then, open the door. Adjust the deadlatch ramp so that it aligns with deadlatch limit lines marked on keeper.



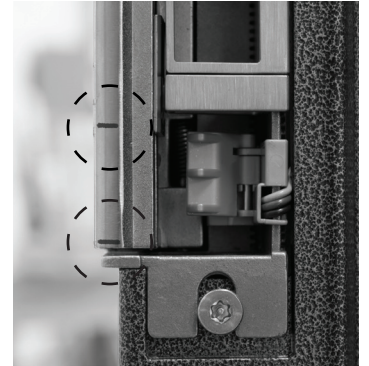
Fail Secure BES-F2164 (Fire-Rated) & Fail Safe BES-2364 Installation Instructions

Adjust Plug-in Latch Monitor (Accessory):

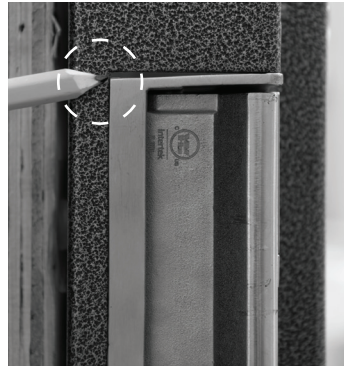
First, move the door towards the strike so that the latch touches the keeper.

Mark latch limit lines on keeper.

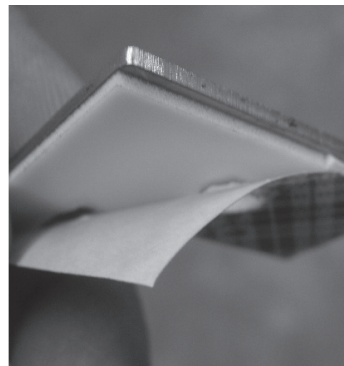
Then, open the door. Mount the Latch Monitor on the strike housing so that it is between the latch limit lines marked on keeper.



2. Mark strike position on the frame.



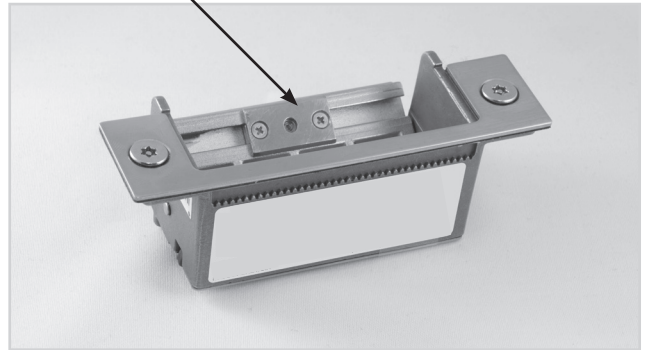
3. Peel the adhesive backing from tape on the back side of the appropriate faceplate. Remove the strike mounting screws. Hold the strike in position as marked on frame. Carefully position the faceplate onto the strike and secure to the frame.



Fail Secure BES-F2164 (Fire-Rated) & Fail Safe BES-2364 Installation Instructions

Horizontal Adjustment: If there is play in the door when closed; the keeper shims may be used to minimize play.

Keeper Sliding Shim



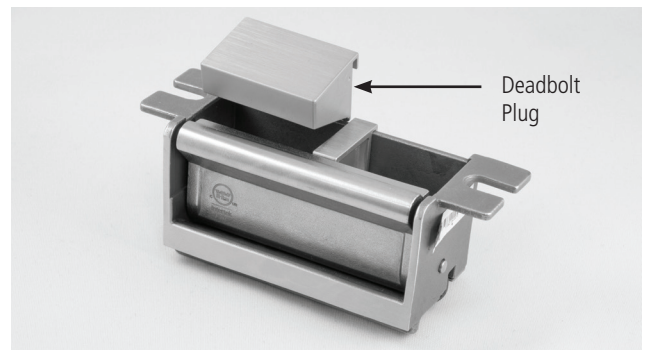
Trim Plate: This can be used in case the frame cutout is bigger than required.

Bend tabs to grip frame



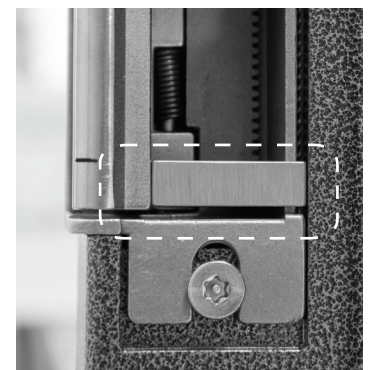
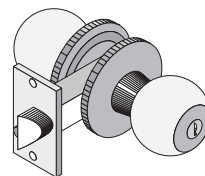
Deadbolt Plug: If the lock set doesn't have a deadbolt, then replace deadbolt keeper with deadbolt plug.

Deadbolt Plug



NOTE: Deadlatch Ramp also acts as a Keeper stop, so don't forget to insert it for centerline cylindrical lock applications.

Cylindrical



For Complete Online Instructions Visit:
<https://dhwsupport.dormakaba.com/hc/en-us>
For Assistance or Warranty Information:
Call 1-800-392-5209 or visit
<https://dhwsupport.dormakaba.com/hc/en-us>