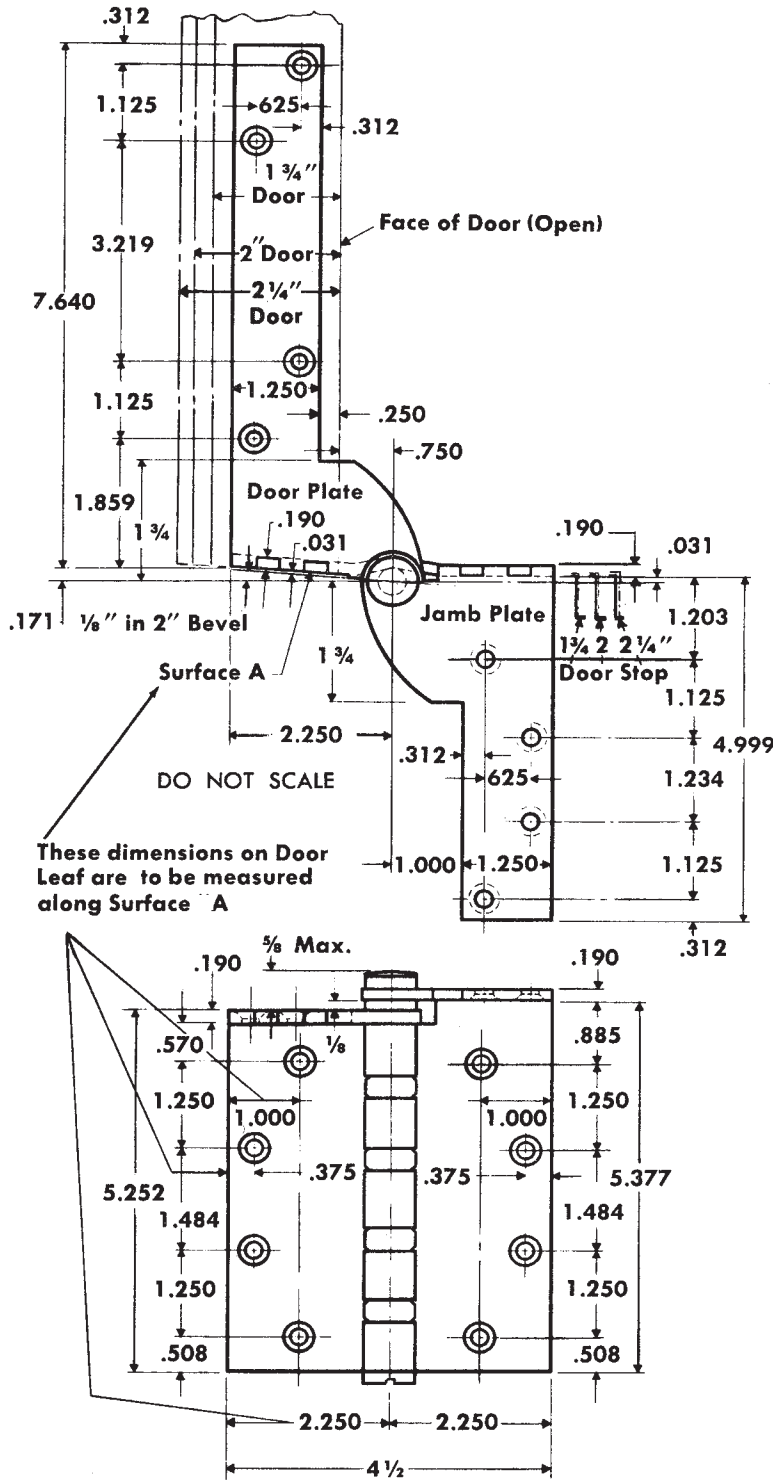


FULL MORTISE TEMPLATE PIVOT REINFORCED HINGES FOR DOORS WITH BEVELED EDGE HINGE STILES

Size: 5 × 4½"

TOP HINGE - RIGHT HAND SHOWN LEFT HAND IS OPPOSITE



For use with door holders, closers and operators. See templates T50-07 and T50-11 for types which provide clearance for concealed devices.

SET CLASS NO.		Gauge of Metal
Steel	Nonferrous	
CB213	CB223	0.190
FBB213	FBB223	0.190
CB1909	CB1969	0.190
CB1909R	CB1969R	0.190

Machine Screw Size — ½ × 12-24 F.H.

Wood Screw Size — 1½ × No. 12 F.H.

NOTE: Backsets which apply when pivot-reinforced hinge is used on door thickness indicated and when the usual 1/16 stop clearance is desired.

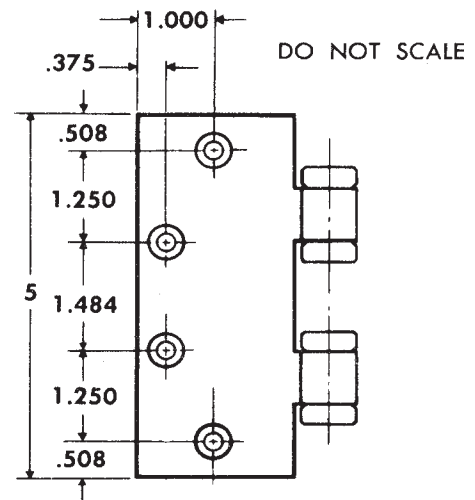
Door Thickness	*Backset on Door	*Backset on Frame
1 3/4	1/4	5/16
2	1/2	9/16
2 1/4	3/4	13/16

*CAUTION: These backsets must be used on ALL hinges in set.

CENTER AND BOTTOM HINGES

Size — 5" × 4½"

Gauge of Metal — .190



Machine Screw Size — ½ × 12-24 F.H.

Wood Screw Size — 1½ × No. 12 F.H.

