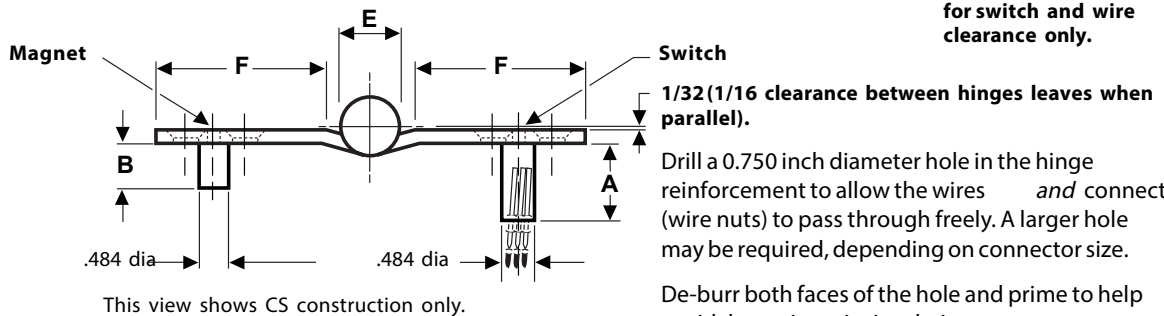
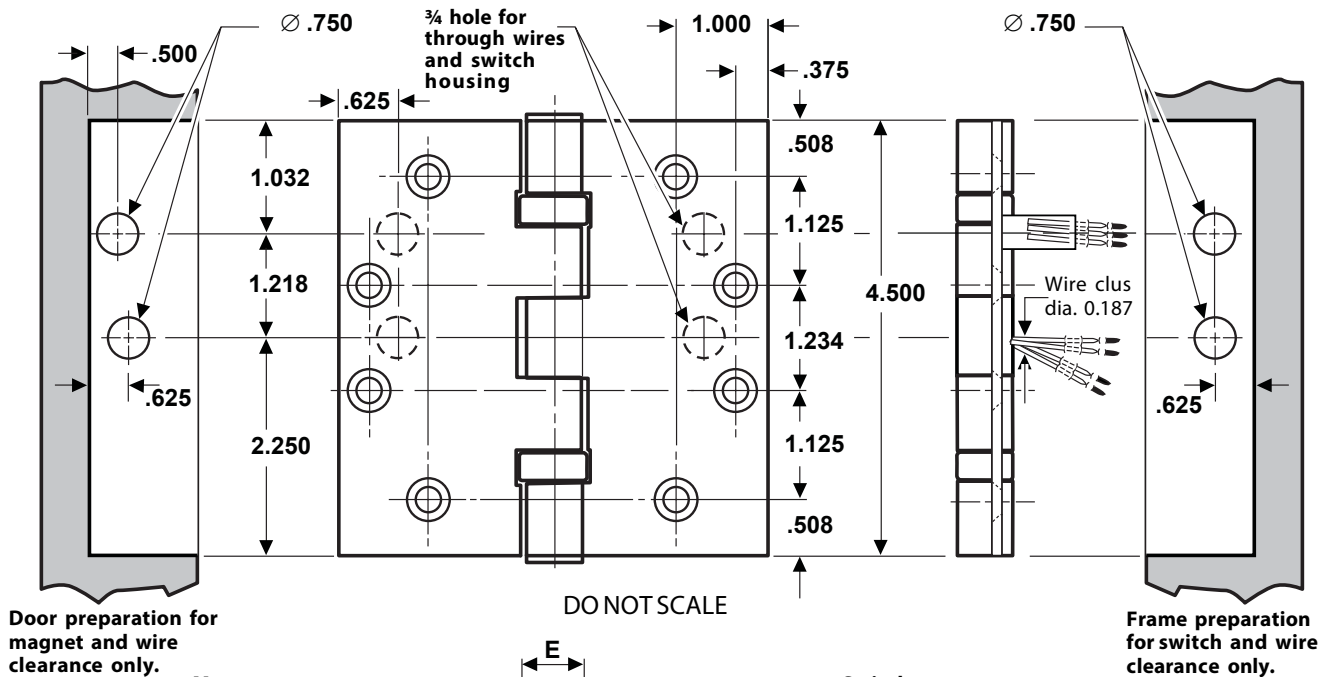


FULL MORTISE TEMPLATE BUTT HINGES WITH CONCEALED WIRES AND CONCEALED SWITCH

Sizes: 4½ × 4 and 4½ × 4½"



Suffix	Number of Wires	Wire Gage
-54	4 wire	28 AWG
-56	6 wire	28 AWG
-66	6 wire	2 ea 24 AWG 4 ea 28 AWG
-58	8 wire	28 AWG
-10	10 wire	28 AWG

Note: FBB168 & FBB199 are not available with the -66 suffix.

CE hinges are available in the following configurations.

CLASS NUMBER		Gauge of Metal	(E) Outside Diameter	DISTANCE FROM EDGE OF LEAF TO SWAGE LINE (F)		A	B
Steel Hinges	Nonferrous Hinges			4½ × 4	4½ × 4½		
CECSCB179	CECSCB191	0.134	0.625	1 5/8	1 25/32	1.234	0.875
CECSFBB179	CECSFBB191	0.134	0.625	1 5/8	1 25/32	1.234	0.875
CECSCB168	CECSCB199	0.180	0.698	1 15/32	1 23/32	1.187	0.828
CECSFBB168	CECSFBB199	0.180	0.698	1 15/32	1 23/32	1.187	0.828

Machine Screw Size — ½ × 12-24 F.H.

Wood Screw Size — ¼ × No. 12 F.H.

