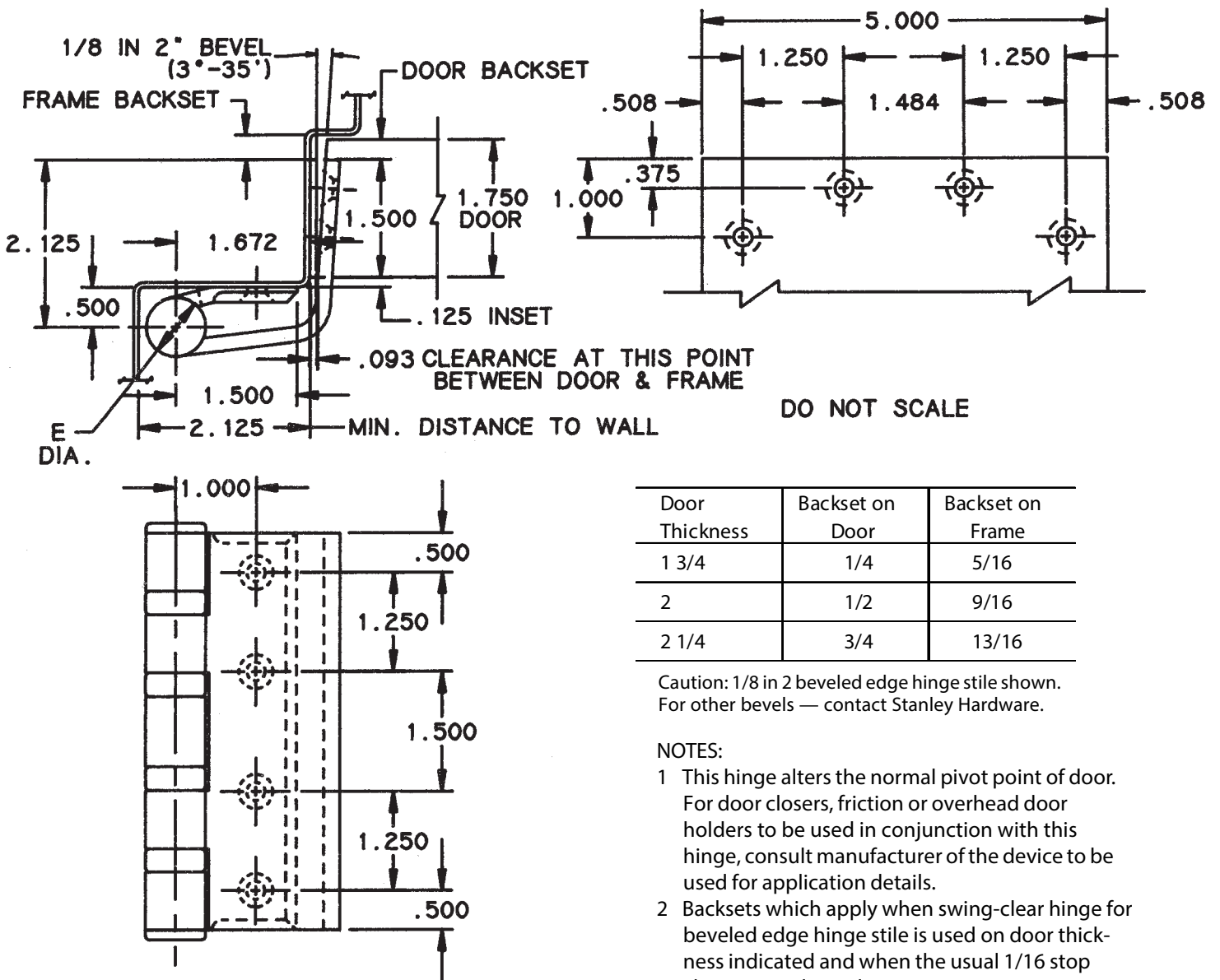


# HALF MORTISE SWING-CLEAR TEMPLATE HINGES FOR DOORS WITH BEVELED HINGE STILES

Size: 5"



Door Thickness	Backset on Door	Backset on Frame
1 3/4	1/4	5/16
2	1/2	9/16
2 1/4	3/4	13/16

Caution: 1/8 in 2 beveled edge hinge stile shown. For other bevels — contact Stanley Hardware.

#### NOTES:

- 1 This hinge alters the normal pivot point of door. For door closers, friction or overhead door holders to be used in conjunction with this hinge, consult manufacturer of the device to be used for application details.
- 2 Backsets which apply when swing-clear hinge for beveled edge hinge stile is used on door thickness indicated and when the usual 1/16 stop clearance is desired.
- 3 Hand of hinge may be changed by inverting hinge and reversing pin and tip.

Class No.	Material	Gauge of Metal	(E) Outside Diameter
FBB274	Steel	0.190	0.748
CB1941	Steel	0.190	0.715
CB1941R	Steel	0.190	0.748
CB274	Steel	0.190	0.748

Template hinges of the hospital type conform to above screw hole location.

Hospital type hinges are designated by prefix "HT" to class number.

Machine Screw Size — Jamb Leaf — No. 12 × 1/2 F.H.

Door Leaf — No. 12 × 1/2 F.H. or No. 12 × 1 1/4 F.H. WD. SCR.

