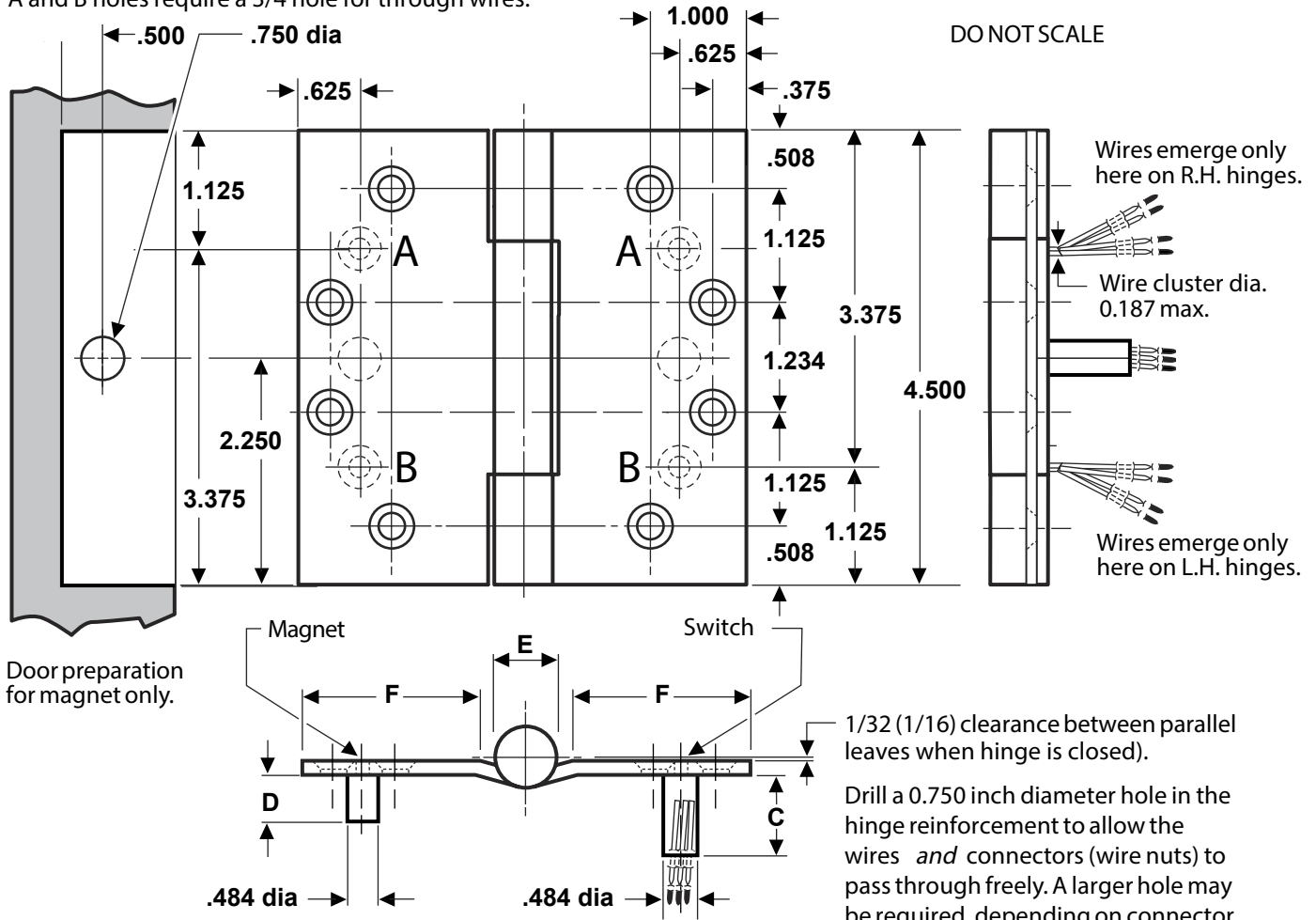


FULL MORTISE TEMPLATE BUTT HINGES WITH CONCEALED WIRES AND CONCEALED SWITCH

Sizes: 4½ × 4 and 4½ × 4½”

A and B holes require a ¾ hole for through wires.



Door preparation for magnet only.

This view shows CS construction only.

NOTES:

- 1 Available with four (4) wires (suffix-54), six (6) wires (suffix-56), or eight (8) wires (suffix-58).
- 2 0.750 diameter recommended hole size for switch housing clearance.
- 3 It is suggested that the hinge be mounted in the center or lower position on the door, rather than the top.
- 4 For reference, see template for JB-2B Junction Box (T90-38R).

1/32 (1/16) clearance between parallel leaves when hinge is closed).

Drill a 0.750 inch diameter hole in the hinge reinforcement to allow the wires and connectors (wire nuts) to pass through freely. A larger hole may be required, depending on connector size.

De-burr both faces of the hole and prime to help avoid damaging wire insulation.

Switches mount in jamb leaf. Arrangement for R.H. door shown. Specify hand when ordering.

| CLASS NUMBER | | Gauge of Metal | (E) Outside Diameter | DISTANCE FROM EDGE OF LEAF TO SWAGE LINE (F) | | C | D |
|--------------|-------------------|----------------|----------------------|--|---------|-------|-------|
| Steel Hinges | Nonferrous Hinges | | | 4½ × 4 | 4½ × 4½ | | |
| CECSCB1900 | CECSCB1960 | 0.134 | 0.540 | 1 5/8 | 1 13/16 | 1.234 | 0.875 |
| CECSCB1900R | CECSCB1960R | 0.134 | 0.625 | 1 5/8 | 1 25/32 | 1.234 | 0.875 |
| CECSCB1901 | CECSCB1961 | 0.180 | 0.690 | — | 1 13/16 | 1.187 | 0.828 |
| CECSCB1901R | CECSCB1961R | 0.180 | 0.698 | — | 1 23/32 | 1.187 | 0.828 |

Machine Screw Size — ½ × 12-24 F.H.

Wood Screw Size — 1 ¼ × No. 12 F.H.

BEST