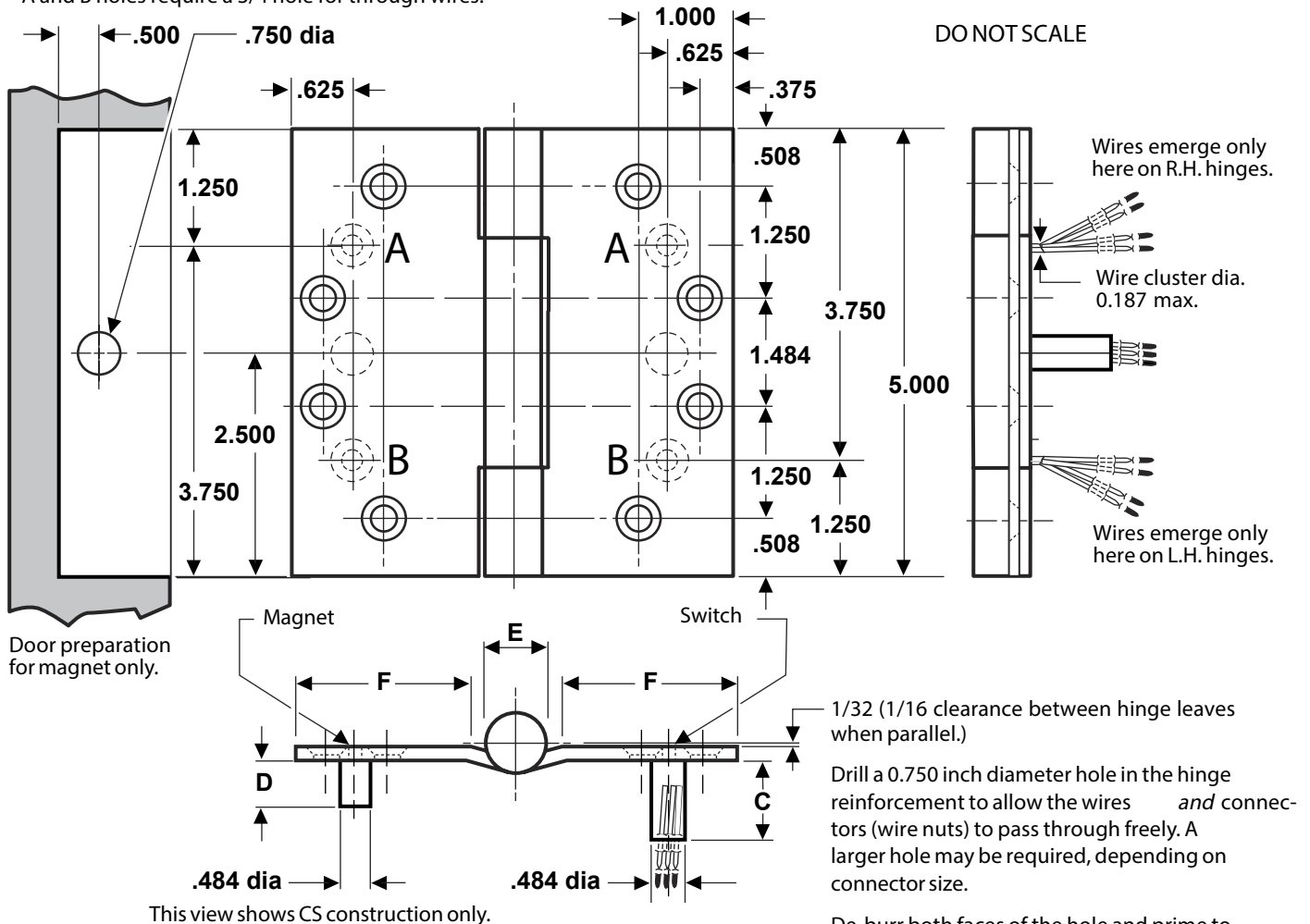


FULL MORTISE TEMPLATE BUTT HINGES WITH CONCEALED WIRES AND CONCEALED SWITCH

Size: 5 × 4½"

A and B holes require a 3/4 hole for through wires.



NOTES:

- 1 Available with four (4) wires (use suffix-54), six (6) wires (use suffix-56) or eight (8) wires (use suffix-58).
- 2 It is suggested that the hinge be mounted in the center or lower position on the door, rather than the top.
- 3 0.750 diameter recommended hole size for switch housing clearance.
- 4 Use a JB-2R Junction Box. See template T90-38R.

CLASS NUMBER		Gauge of Metal	(E) Outside Diameter	DISTANCE FROM EDGE OF LEAF TO SWAGE LINE (F)	C	D
Steel Hinges	Nonferrous Hinges					
CECSCB1900	CECSCB1960	0.146	0.580	1 55/64	1.218	0.859
CECSCB1900R	CECSCB1960R	0.146	0.699	1 13/16	1.218	0.859
CECSCB1901	CECSCB1961	0.190	0.715	1 13/16	1.172	0.812
CECSCB1901R	CECSCB1961R	0.190	0.748	1 22/32	1.172	0.812

Machine Screw Size — ½ × 12-24 F.H.

Wood Screw Size — [1¼ × No. 12 F.H. for standard weight (0.146) hinges
1½ × No. 12 F.H. for heavy weight (0.190) hinges

