

Surface Vertical Rod Device 5200 & FL5200 Series x 808A, 814A Trim Hollow Metal Door (LBR Require Fire Bolt Template)

Trim Series: 808, 814

Device Series: 5200, FL5200, 5200LBR, FL5200LBR

Strike: S300, S301, S460



For online instructions, assistance or warranty information:
Call 1-800-392-5209 or visit <https://dhwsupport.dormakaba.com/hc/en-us>

REINFORCEMENT REQUIREMENTS

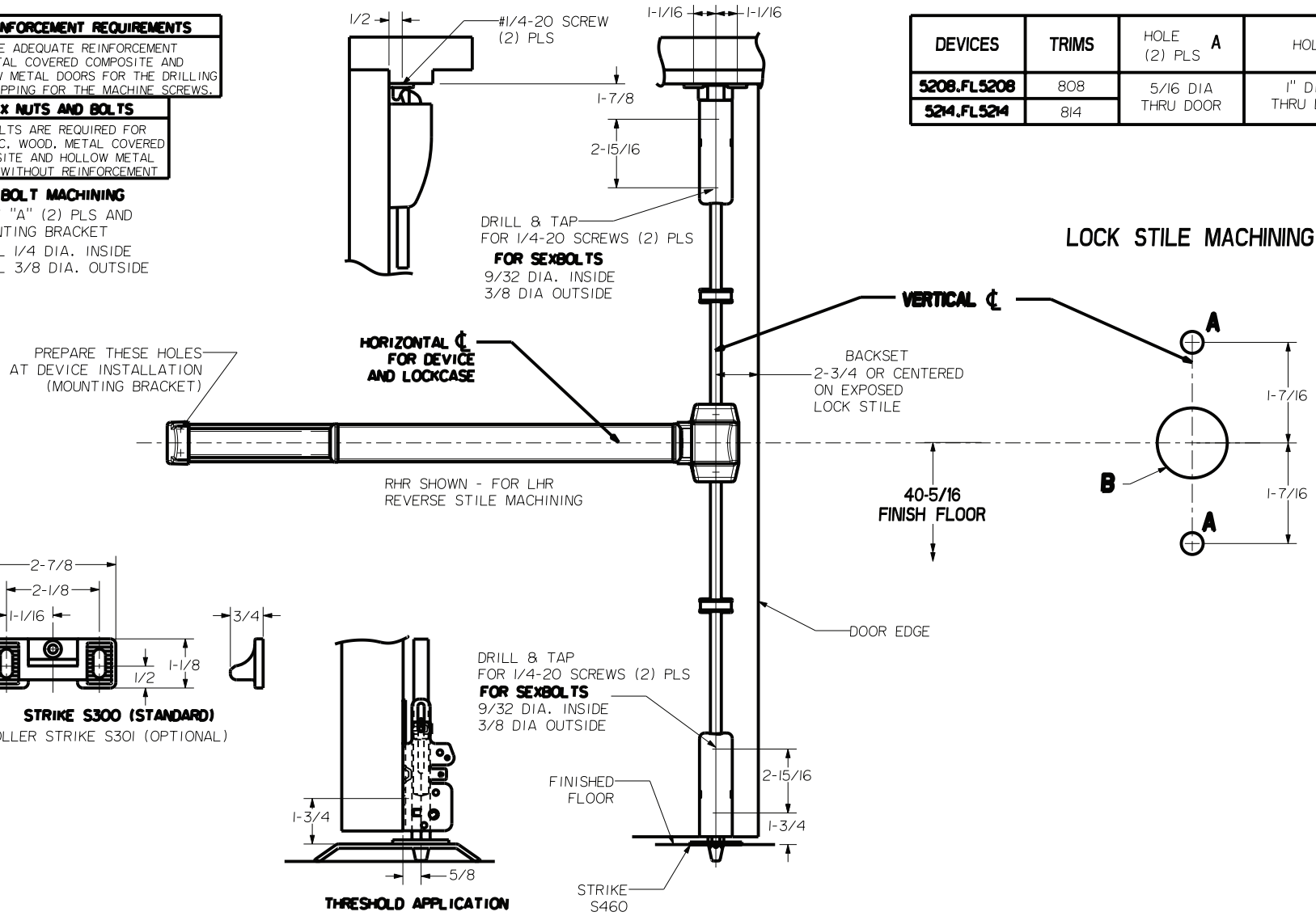
PROVIDE ADEQUATE REINFORCEMENT TO METAL COVERED COMPOSITE AND HOLLOW METAL DOORS FOR THE DRILLING AND TAPPING FOR THE MACHINE SCREWS.

SEX NUTS AND BOLTS

SEX BOLTS ARE REQUIRED FOR PLASTIC, WOOD, METAL COVERED COMPOSITE AND HOLLOW METAL DOORS WITHOUT REINFORCEMENT

SEX BOLT MACHINING

HOLE "A" (2) PLS AND MOUNTING BRACKET
DRILL 1/4 DIA. INSIDE
DRILL 3/8 DIA. OUTSIDE



DEVICES	TRIMS	HOLE (2) PLS A	HOLE B
5208, FL5208	808	5/16 DIA THRU DOOR	1" DIA. THRU DOOR
5214, FL5214	814		

NOTE: FITS STOCK DOORS WITH ANSI A115.17 (161) AND ANSI A115.18 CUT-OUTS, REQUIRE TRIM THRU BOLT HOLES AT DEVICE INSTALLATION.

LBR DEVICES:
OMIT BOTTOM BOLT MACHINING.
FIRE BOLT REQ'D FOR FL DEVICES
SEE DRAWING Q297-II-000 FOR DETAILS