

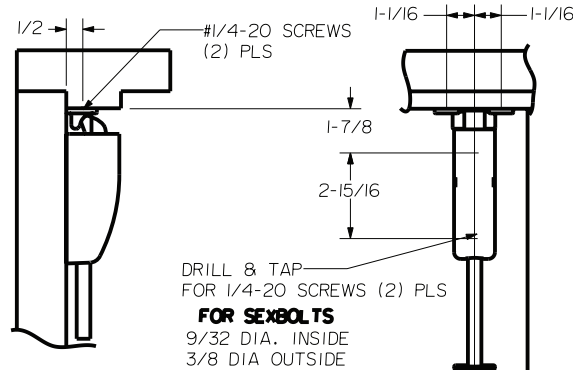
**Surface Vertical Rod Device 5200 & FL5200 Series x
501, 602, 603, 702A, 703A Trim Hollow Metal Door
(LBR Require Fire Bolt Template)**

Trim Series: Exit Only, CYL Only 501, 602, 603, 702, 703
Device Series: 5200, FL5200, 5200LBR, FL5200LBR
Strike: S300, S301, S460

For online instructions, assistance or warranty information:
Call 1-800-392-5209 or visit <https://dhwsupport.dormakaba.com/hc/en-us>

REINFORCEMENT REQUIREMENTS
PROVIDE ADEQUATE REINFORCEMENT TO METAL COVERED COMPOSITE AND HOLLOW METAL DOORS FOR THE DRILLING AND TAPPING FOR THE MACHINE SCREWS.
SEX NUTS AND BOLTS
SEX BOLTS ARE REQUIRED FOR PLASTIC, WOOD, METAL COVERED COMPOSITE AND HOLLOW METAL DOORS WITHOUT REINFORCEMENT

SEX BOLT MACHINING
HOLE "A" (2) PLS AND MOUNTING BRACKET
DRILL 1/4 DIA INSIDE
DRILL 3/8 DIA OUTSIDE



DEVICES	TRIMS	HOLE A (2) PLS	HOLE B
5201, FL5201	EXIT ONLY	#10-24 TAP INSIDE ONLY	NO
5203, FL5203	CYL ONLY		1-3/16 DIA OUTSIDE 1-3/8 DIA INSIDE
5201, FL5201	501	5/16 DIA. THRU	NO
5202, FL5202	602		1-3/8 DIA THRU
5203, FL5203	603		NO
5202, FL5202	702		1-3/8 DIA THRU
5203, FL5203	703		1-3/8 DIA THRU

LOCK STILE MACHINING

PREPARE THESE HOLES AT DEVICE INSTALLATION (MOUNTING BRACKET)

HORIZONTAL CL FOR DEVICE AND LOCKCASE

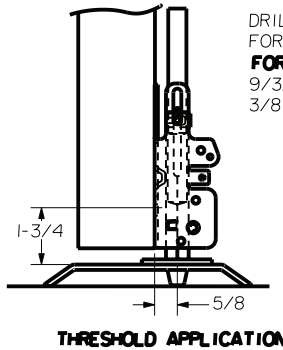
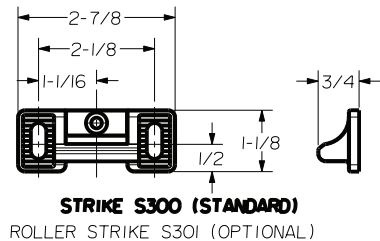
VERTICAL CL

BACKSET 2-3/4 OR CENTERED ON EXPOSED LOCK STILE

RHR SHOWN - FOR LHR REVERSE STILE MACHINING

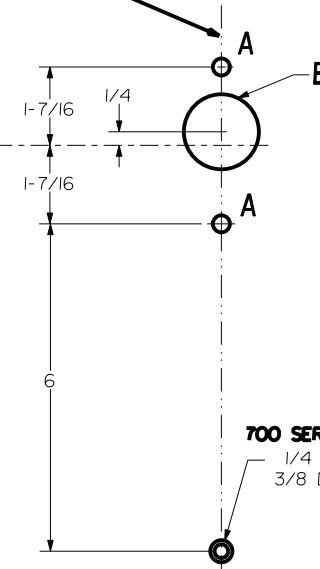
40-5/16 FINISH FLOOR

DOOR EDGE



DRILL & TAP FOR 1/4-20 SCREWS (2) PLS FOR SEXBOLTS
9/32 DIA. INSIDE
3/8 DIA OUTSIDE

FINISHED FLOOR
2-15/16
1-3/4
STRIKE S460



NOTE: FITS STOCK DOORS WITH ANSI A115.17 (161) AND ANSI A115.18 CUT-OUTS, REQUIRE TRIM THRU BOLT HOLES AT DEVICE INSTALLATION.

LBR DEVICES:
OMIT BOTTOM BOLT MACHINING.
FIRE BOLT REQ'D FOR FL DEVICES
SEE DRAWING 0297-II-000 FOR DETAILS