

# Rim Device 5100 Series x 501, 602, 603, 702A, 703A Trim Aluminum Door

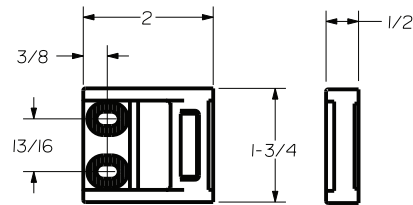
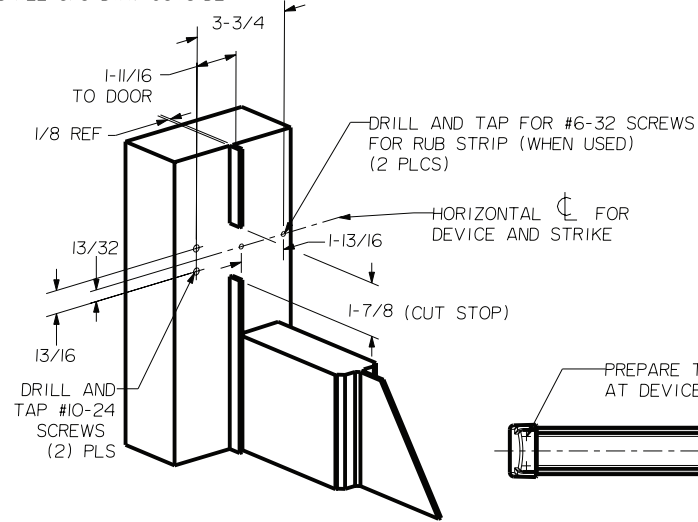
Trim Series: Exit Only, CYL Only 501, 602, 603, 702, 703  
Device Series: 5100  
Strike: S988



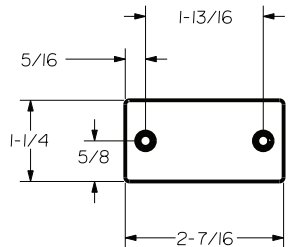
For online instructions, assistance or warranty information:  
Call 1-800-392-5209 or visit <https://dhwsupport.dormakaba.com/hc/en-us>

### SEX BOLT MACHINING

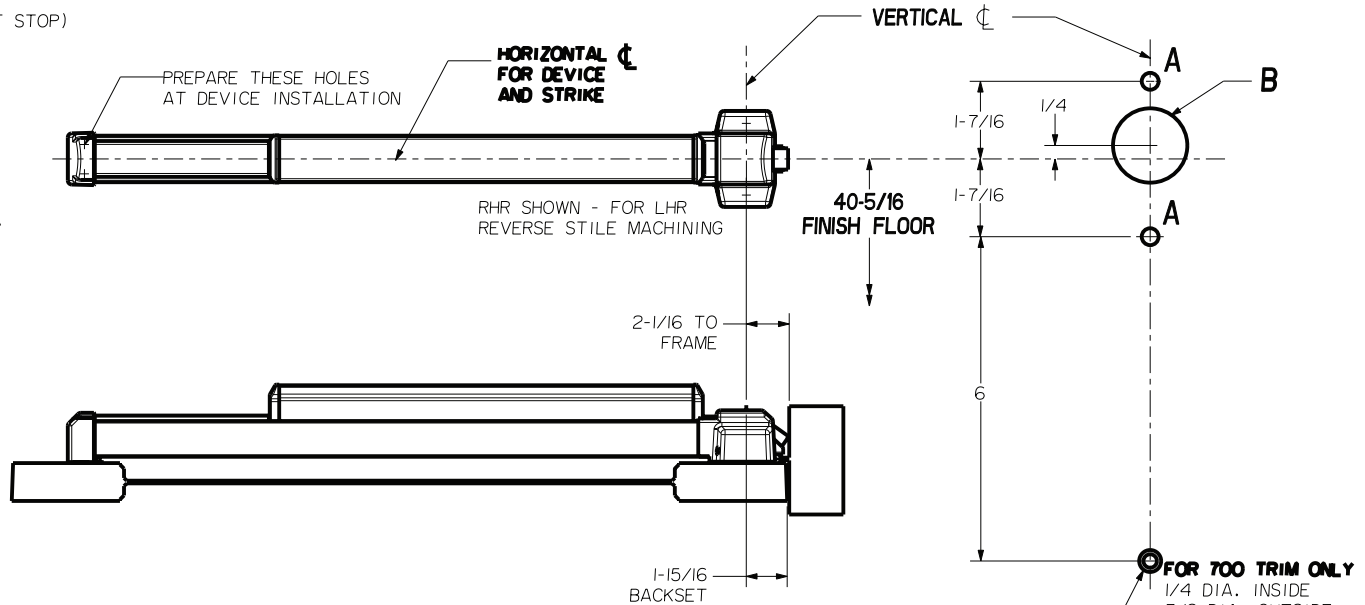
DRILL 1/4 DIA. INSIDE  
DRILL 3/8 DIA. OUTSIDE



ROLLER STRIKE S988 (STANDARD)



RUB STRIP S454 (STANDARD)



DEVICES	TRIMS	HOLE A (2) PLS	HOLE B
501	EXIT ONLY	#10-24 TAP INSIDE ONLY	NO
503	CYL ONLY		1-3/16 DIA. OUTSIDE 1-3/8 DIA. INSIDE
501	501	5/16 DIA. THRU	NO
502	602		1-3/8 DIA THRU
503	603		NO
502	702		1-3/8 DIA THRU
503	703		1-3/8 DIA THRU

### LOCK STILE MACHINING

ALUMINUM DOOR AND FRAME WITH BLADE OR APPLIED STOP		
MIN. STILES	DEVICE SIZE	DOOR WIDTH
3-3/4"	3'-0"	2'-6" TO 2'-11"
	4'-0"	3'-0" TO 3'-11"
4-1/4" OR FLUSH DOOR	3'-0"	2'-7" TO 3'-0"
	4'-0"	3'-1" TO 4'-0"