

# Rim Device 5100 & FL5100 Series x 808A, 814A Trim Hollow Metal Door

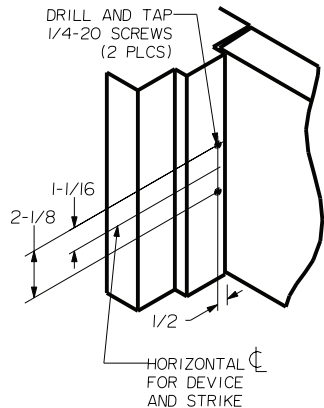
Trim Series: 808, 814  
Device Series: 5100, FL5100  
Strike: S300, S301, S458

For online instructions, assistance or warranty information:  
Call 1-800-392-5209 or visit <https://dhwsupport.dormakaba.com/hc/en-us>

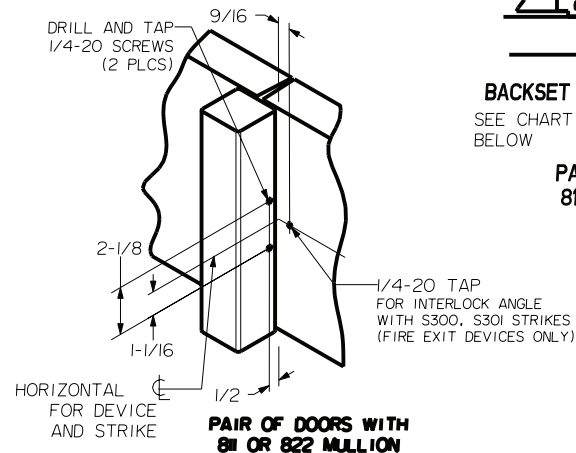
**REINFORCEMENT REQUIREMENTS**  
PROVIDE ADEQUATE REINFORCEMENT TO METAL COVERED COMPOSITE AND HOLLOW METAL DOORS FOR THE DRILLING AND TAPPING FOR THE MACHINE SCREWS.

**SEX NUTS AND BOLTS**  
SEX BOLTS ARE REQUIRED FOR PLASTIC, WOOD, METAL COVERED COMPOSITE AND HOLLOW METAL DOORS WITHOUT REINFORCEMENT

**SEX BOLT MACHINING**  
DRILL 1/4 DIA. INSIDE  
DRILL 3/8 DIA. OUTSIDE

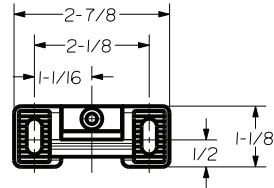


**SINGLE DOOR WITH 5/8 STOP**



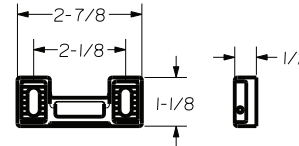
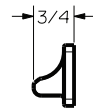
**PAIR OF DOORS WITH 811 OR 822 MULLION**

NOTE: FITS STOCK DOORS WITH ANSI A115.17 (161) AND ANSI A115.18 CUT-OUTS. REQUIRE TRIM THRU BOLT HOLES AT DEVICE INSTALLATION.



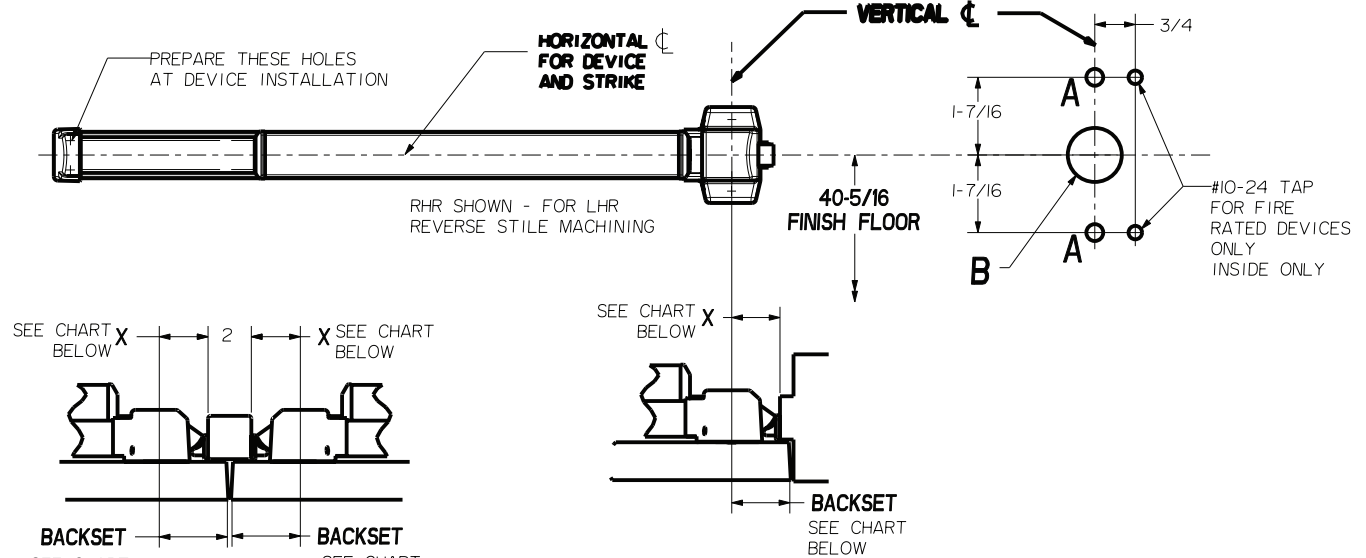
**STRIKE S300 (STANDARD)**

ROLLER STRIKE S301 (OPTIONAL)

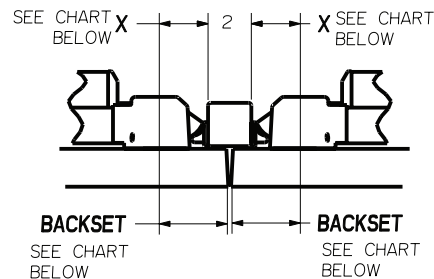


ROLLER STRIKE S458 (OPTIONAL)

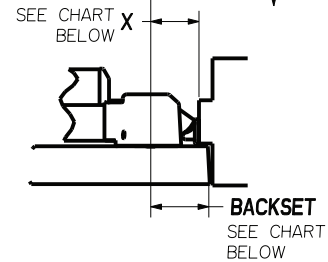
| DEVICES   | TRIMS | HOLE A (2) PLS     | HOLE B            |
|-----------|-------|--------------------|-------------------|
| 508.FL508 | 808   | 5/16 DIA THRU DOOR | 1" DIA. THRU DOOR |
| 514.FL514 | 814   |                    |                   |



**LOCK STILE MACHINING**



**PAIR OF DOORS WITH 811 OR 822 MULLION**



**SINGLE DOOR WITH 5/8 STOP**

| STRIKE       | APPLICATION   | BACKSET | MIN. STILE | DIM X  |
|--------------|---------------|---------|------------|--------|
| S300<br>S301 | SINGLE DOOR   | 2-3/4   | 4-1/2      | 2-1/4  |
|              | PAIR OF DOORS | 3-1/8   | 4-7/8      |        |
| S458         | SINGLE DOOR   | 2-9/16  | 4-1/4      | 2-1/16 |
|              | PAIR OF DOORS | 2-15/16 | 4-5/8      |        |