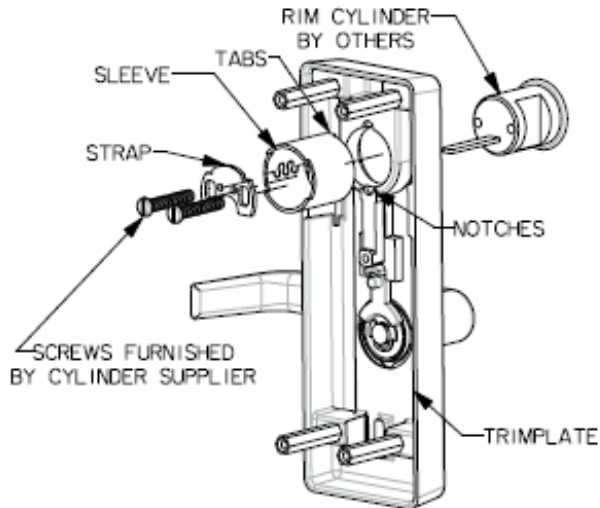


# 3900 Series Trim Instructions

For online instructions, assistance or warranty information:  
Call 1-800-392-5209 or visit <https://dhwsupport.dormakaba.com/hc/en-us>

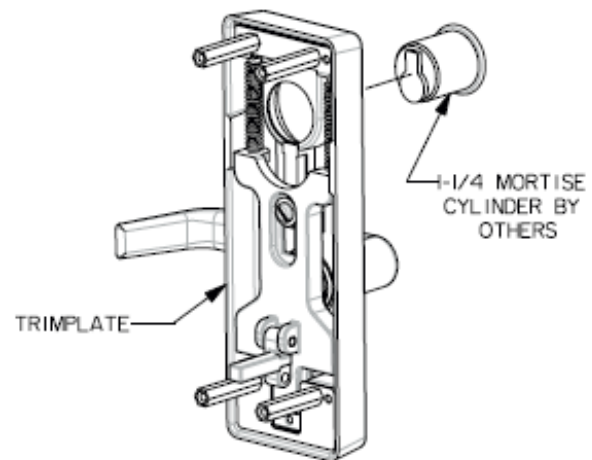
(SEE TEMPLATE FOR DOOR PREPARATION)

## RIM CYLINDER INSTALLATION



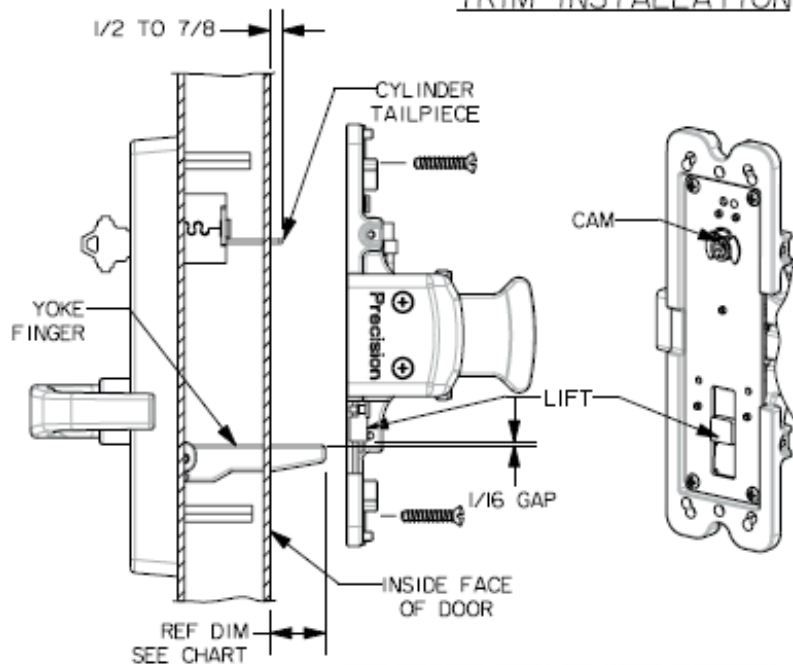
- 1) INSERT RIM CYLINDER INTO TRIM.
- 2) POSITION SLEEVE BY PLACING TABS INTO THE NOTCHES IN THE TRIM PLATE.
- 3) PLACE STRAP ON THE SLEEVE.
- 4) SECURE CYLINDER BY TIGHTENING SCREWS.

## MORTISE CYLINDER INSTALLATION



- 1) THREAD CYLINDER INTO THE MORTISE LOCK THROUGH TRIM ASSEMBLY.
- 2) SECURE WITH SCREW THROUGH MORTISE LOCK FRONT.

## TRIM INSTALLATION



FOR DEVICES WITH CYLINDER FUNCTION, INSERT CYLINDER TAILPIECE INTO THE CAM

FOR DEVICES WITH ACTIVE LEVER OR KNOB MAKE SURE YOKE FINGER IS UNDER THE LIFT WITH 1/16 GAP.

SECURE THE CHASSIS TO THE TRIM WITH SCREWS

NOTE:  
REF DIM DOES NOT APPLY TO MORTISE DEVICE TRIMS

DEVICE TYPE	DOOR THK.	REF.DIM
TOUCHBAR DEVICE	1-3/4	1-1/16
	2	13/16
	2-1/4	9/16
CROSSBAR DEVICE	1-3/4	1/2
	2	1/4
	2-1/4	FLUSH