

Surface Vertical Rod Device 2200 & FL2200 Series x 2000 Trim Hollow Metal Door (LBR requires Fire Bolt Template)

Trim Series: 2000

Device Series: 2200, FL2200, 2200LBR, FL2200LBR

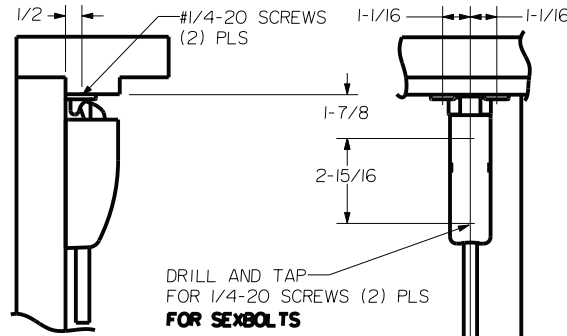
Strike: S300, S301, S460

For online instructions, assistance or warranty information:
Call 1-800-392-5209 or visit <https://dhwsupport.dormakaba.com/hc/en-us>

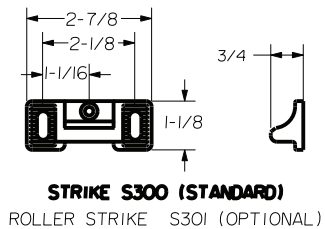
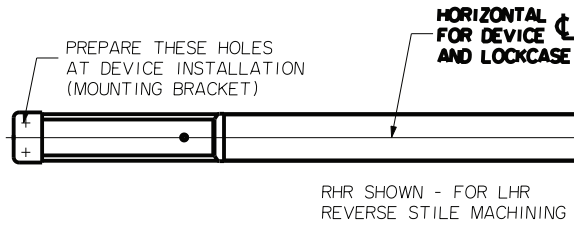
REINFORCEMENT REQUIREMENTS
PROVIDE ADEQUATE REINFORCEMENT TO METAL COVERED COMPOSITE AND HOLLOW METAL DOORS FOR THE DRILLING AND TAPPING OF THE MACHINE SCREWS.
SEX NUTS AND BOLTS
SEX BOLTS ARE REQUIRED FOR PLASTIC, WOOD, METAL COVERED COMPOSITE AND HOLLOW METAL DOORS WITHOUT REINFORCEMENT

SEX BOLT MACHINING

HOLE "A" (4) PLS AND MOUNTING BRACKET
DRILL 1/4 DIA INSIDE
DRILL 3/8 DIA OUTSIDE

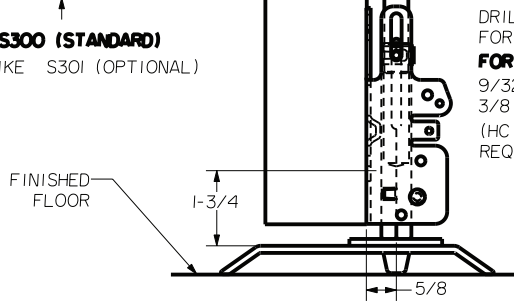


DRILL AND TAP FOR 1/4-20 SCREWS (2) PLS
FOR SEXBOLTS
9/32 DIA. INSIDE
3/8 DIA OUTSIDE
(HC DEVICES REQUIRE SEXBOLTS)



STRIKE S300 (STANDARD)

ROLLER STRIKE S301 (OPTIONAL)



THRESHOLD APPLICATION

NOTE: "LETTER" AT END OF TRIM MODEL NO. DESIGNATES GRIP STYLE. EXCEPT AS NOTED, GRIP STYLE HAS NO EFFECT ON STILE MACHINING.

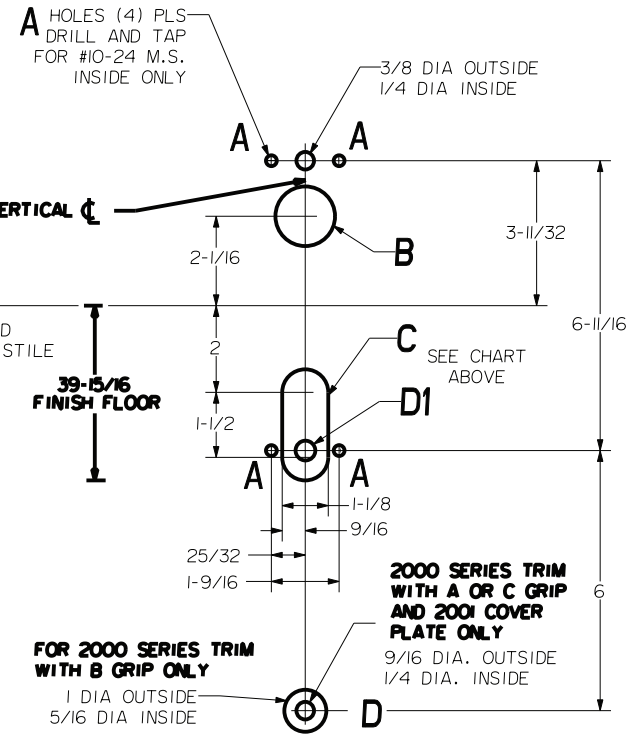
DRILL AND TAP FOR 1/4-20 SCREWS (2) PLS
FOR SEXBOLTS
9/32 DIA. INSIDE
3/8 DIA OUTSIDE
(HC DEVICES REQUIRE SEXBOLTS)

STRIKE S460

FINISHED FLOOR

DEVICES	TRIMS	HOLE B 1-3/8 DIA. THRU DOOR	SLOT THRU DOOR C	DI
2201.FL2201	2001	NO	NO	3/8 DIA OUTSIDE 1/4 DIA INSIDE
2202.FL2202	2002			
2203.FL2203	2003	YES	YES	NO
2205.FL2205	2005			
2215.FL2215	2015	NO		

LOCK STILE MACHINING



LBR DEVICES:
OMIT BOTTOM BOLT MACHINING.
FIRE BOLT REQ'D FOR FL DEVICES
SEE DRAWING 0297-I-000 FOR DETAILS