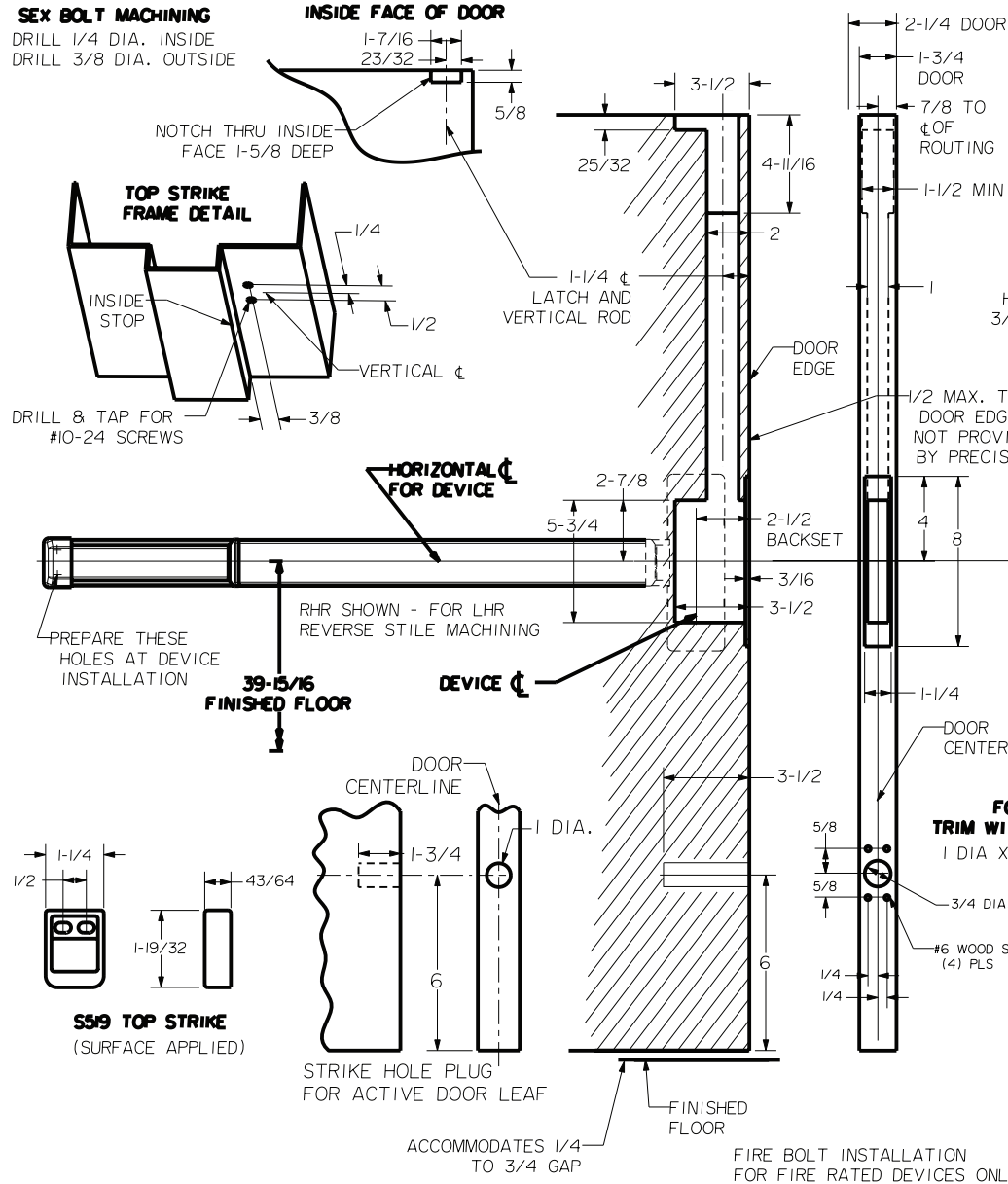


# Concealed Vertical Rod Device 2700LBR & FL2700LBR Series x 2000 Trim Wood Door

Trim Series: 2000  
Device Series: 2700LBR, FL2700LBR  
Strike: S519

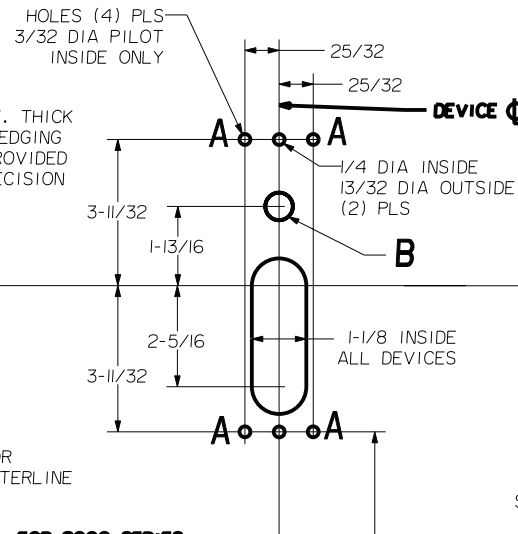


For online instructions, assistance or warranty information:  
Call 1-800-392-5209 or visit <https://dhwsupport.dormakaba.com/hc/en-us>

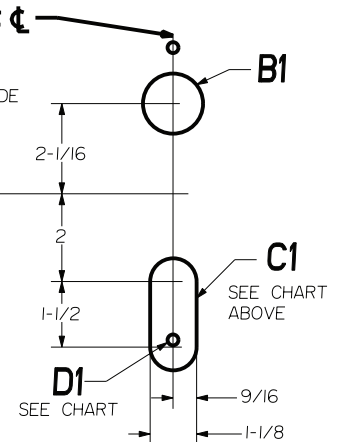


DEVICES	TRIMS	HOLE B	HOLE B1	HOLE C1	HOLE D1
2700LBR/FL2700LBR	2001	NO	NO	NO	3/8 DIA THRU DOOR
2702LBR/FL2702LBR	2002	NO	NO	NO	3/8 DIA THRU DOOR
2703LBR/FL2703LBR	2003	5/8 DIA INSIDE ONLY	1-3/8 DIA OUTSIDE ONLY	1-1/8 X 1-1/2 SLOT OUTSIDE X 5/8 DEEP	NO
2705LBR/FL2705LBR	2005	NO	NO	NO	NO
2715LBR/FL2715LBR	2015	NO	NO	NO	NO

## DEVICE SIDE MACHINING



## TRIM SIDE MACHINING



## FOR 2000 SERIES TRIM WITH B GRIP ONLY

1 DIA X 1 DEEP OUTSIDE  
5/16 DIA INSIDE

**2000 SERIES TRIM WITH A OR C GRIP AND 2001 COVER PLATE ONLY**  
9/16 DIA. X 1-3/8 DEEP OUTSIDE  
1/4 DIA INSIDE

NOTE: "LETTER" AT END OF TRIM MODEL NO. DESIGNATES GRIP STYLE. EXCEPT AS NOTED, GRIP STYLE HAS NO EFFECT ON STILE MACHINING.