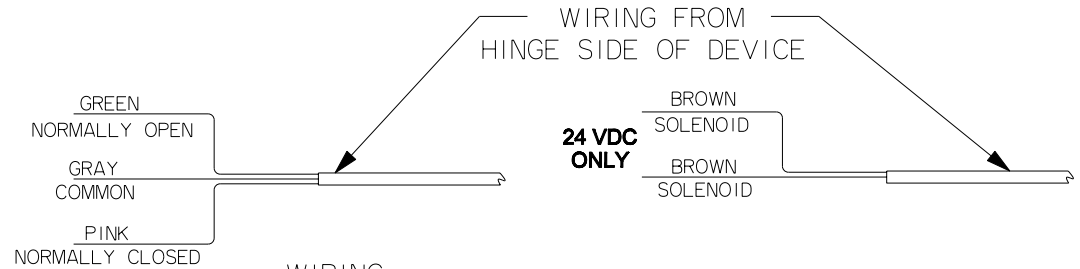


Electric Lock / Unlock Wiring Details

For online instructions, assistance or warranty information:
Call 1-800-392-5209 or visit <https://dhwsupport.dormakaba.com/hc/en-us>



WIRING:

- Disconnect all power before servicing.
- Consult local codes to determine proper wiring

OPERATION:

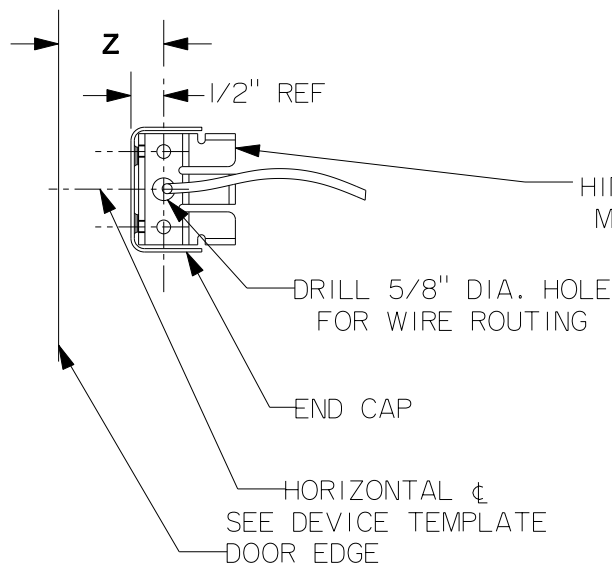
Normally Open Circuit: (across gray and green wires)
Locked = open circuit
Unlocked = closed circuit

Normally Closed Circuit: (across gray and pink wires)
Locked = closed circuit
Unlocked = open circuit

FOR STANDARD 3' OR 4' DOORS:

- Wide stile device with 2-3/4" backset:
Z = 2-1/4"
- Narrow stile device on Aluminum door/frame with 1-1/16" backset: **Z = 1-1/16"**
- Narrow stile device on Hollow metal door/frame with channel cut to 1-1/8" recommended clearance
Z = 2-1/8"

(For installation with mullion and other backset requirements, add or subtract from dimension shown.)



FIELD WIRING (BY OTHERS)

POWER TRANSFER HINGE REQUIRED

HINGE STILE MACHINING

For Lock Stile machining and Mounting Bracket location see Device Template

Not to scale 1:1. Measurements are for reference only.
Not a drilling template.