

Series: 2800, FL2800, 2800LBR, FL2800LBR – Trim Series: C03 – Door Preparation

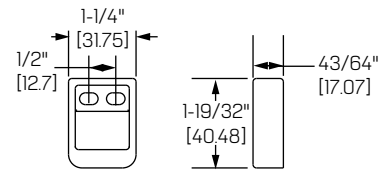
For online instructions, assistance or warranty information:
Call 1-800-392-5209 or visit <https://dhwsupport.dormakaba.com/hc/en-us>

Reinforcement requirements

Provide adequate reinforcement to metal-covered composite and hollow metal doors for drilling and tapping for machine screws.

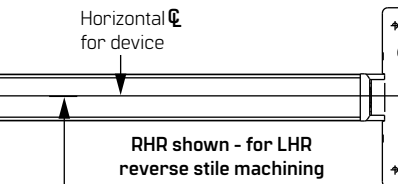
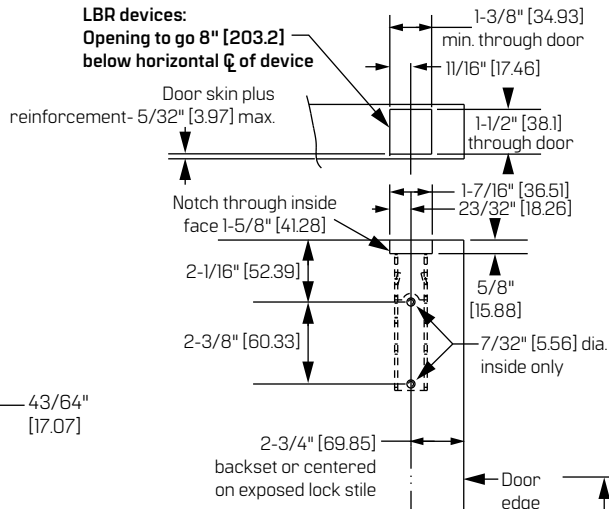
Sex nuts and bolts

Sex bolts are required for plastic, wood, metal-covered composite and hollow metal doors without reinforcement.



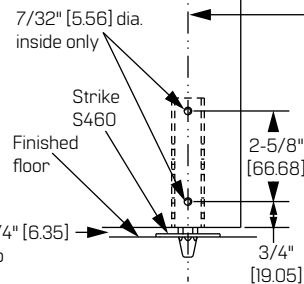
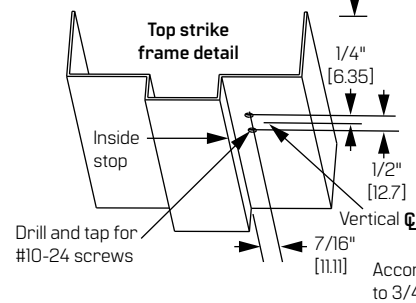
S519 top strike (surface applied)

Prepare these holes at device installation.



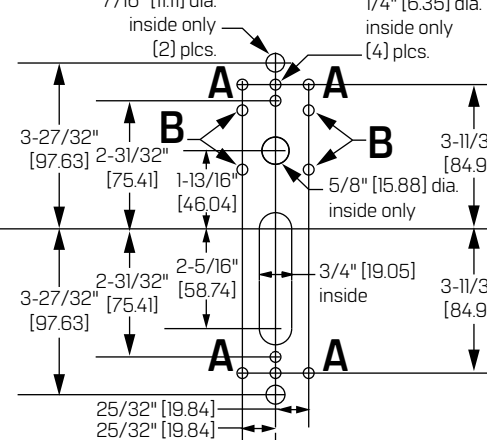
Sex bolt machining

Drill 1/4" [6.35] dia. inside.
Drill 3/8" [9.53] dia. outside.

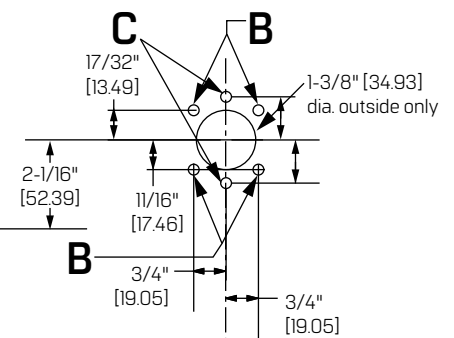


A-hole (4) plcs.	Devices	Trims	B-hole	C-hole
#10-24 tap inside only	2803, FL2803	C03	1/4" [6.35] dia. through door	1/4" [6.35] dia. outside only

Device side machining



Trim side machining



LBR devices:
Omit bottom bolt machining.
Fire bolt req'd for FL devices.
See drawing T93637 for details.