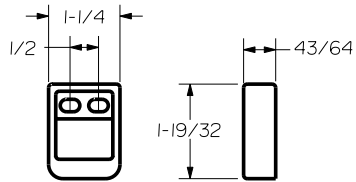


# Installation Specifications: Series 2600, 2600LBR, FL2600, FL2600LBR Trim Series: 2908, 2914

For online instructions, assistance or warranty information:  
Call 1-800-392-5209 or visit <https://dhwsupport.dormakaba.com/hc/en-us>

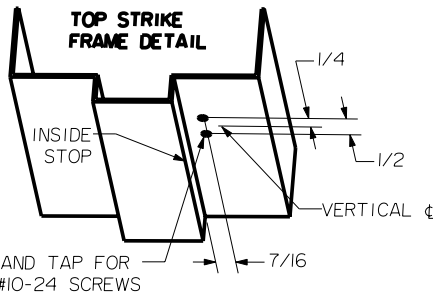
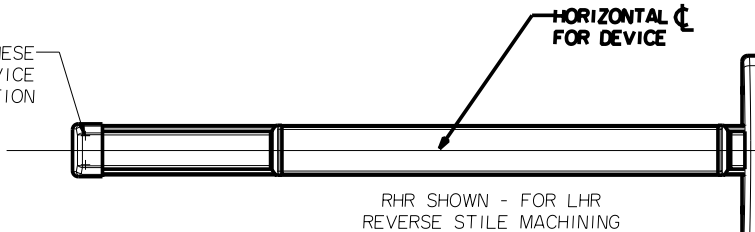
REINFORCEMENT REQUIREMENTS
PROVIDE ADEQUATE REINFORCEMENT TO METAL COVERED COMPOSITE AND HOLLOW METAL DOORS FOR THE DRILLING AND TAPPING FOR THE MACHINE SCREWS.
SEX NUTS AND BOLTS
SEX BOLTS ARE REQUIRED FOR PLASTIC, WOOD, METAL COVERED COMPOSITE AND HOLLOW METAL DOORS WITHOUT REINFORCEMENT

**SEX BOLT MACHINING**  
DRILL 1/4 DIA. INSIDE  
DRILL 3/8 DIA. OUTSIDE

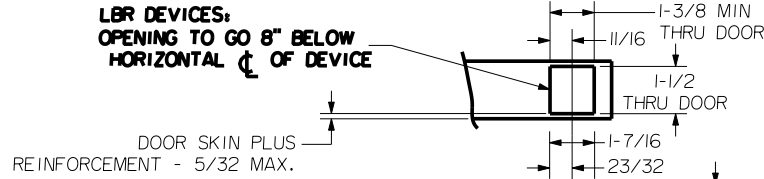


**S519 TOP STRIKE**  
(SURFACE APPLIED)

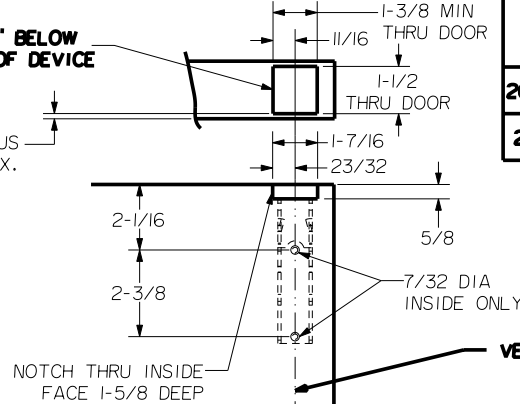
PREPARE THESE HOLES AT DEVICE INSTALLATION



NOTE: "LETTER" AT END OF TRIM MODEL NO. DESIGNATES LEVER STYLE. EXCEPT AS NOTED, LEVER STYLE HAS NO EFFECT ON STILE MACHINING.

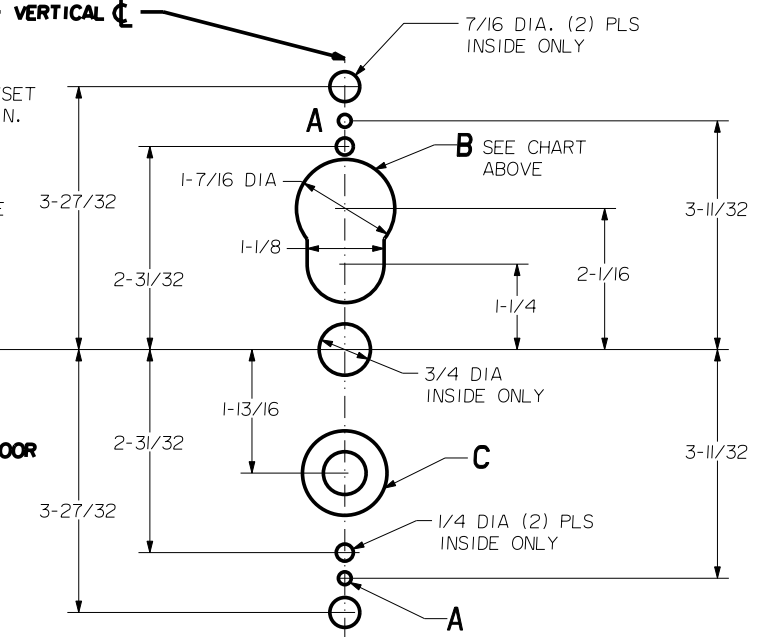


**LBR DEVICES:**  
OPENING TO GO 8" BELOW  
HORIZONTAL  $\text{CL}$  OF DEVICE



DEVICES	TRIMS	HOLE (2) PLS A	HOLE B	HOLE C
2608.FL2608	2908	1/4 DIA INSIDE 3/32 DIA OUTSIDE	OUTSIDE ONLY	5/8 DIA INSIDE 1-3/8 DIA OUTSIDE
2614.FL2614	2914		NOT REQ'D	

## LOCK STILE MACHINING



**LBR DEVICES:**  
OMIT BOTTOM BOLT MACHINING.  
FIRE BOLT REQ'D FOR FL DEVICES  
SEE DRAWING 01297-II-000 FOR DETAILS