

Installation Specifications: Series 2600, 2600LBR Trim Series: Exit Only, Cyl. Only, 2901, 2902, 2903

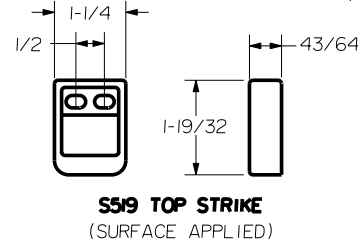
For online instructions, assistance or warranty information:
Call 1-800-392-5209 or visit <https://dhwsupport.dormakaba.com/hc/en-us>

HOLE (2) PLS	DEVICES	TRIMS	HOLE B	HOLE B1	SLOT D
#10-24 TAP INSIDE ONLY	2601	EXIT ONLY	NO	NO	NO
	2603	CYL ONLY	1-3/16 DIA. OUTSIDE		3/4 SLOT INSIDE
1/4 DIA INSIDE 13/32 DIA OUTSIDE	2601	2901	NO	YES	NO
	2602	2902	1-7/16 DIA OUTSIDE		
	2603	2903	1-7/16 DIA OUTSIDE		

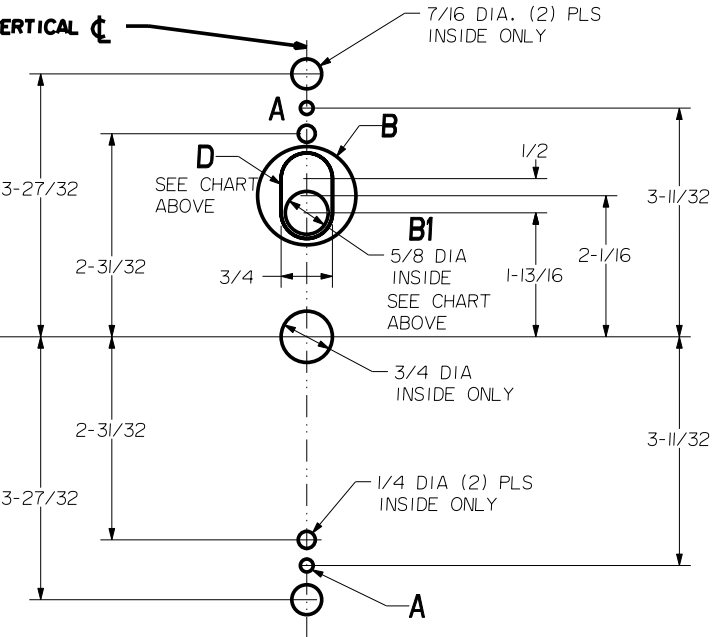
SEX BOLT MACHINING
DRILL 1/4 DIA. INSIDE
DRILL 3/8 DIA. OUTSIDE

DOOR SKIN PLUS REINFORCEMENT - 5/32 MAX
11/16
1-3/8 MIN THRU DOOR
1-7/16
23/32
1-1/2 THRU DOOR

NOTCH THRU INSIDE FACE 1-5/8 DEEP
2-1/16
2-3/8
5/8
7/32 DIA INSIDE ONLY



LOCK STILE MACHINING

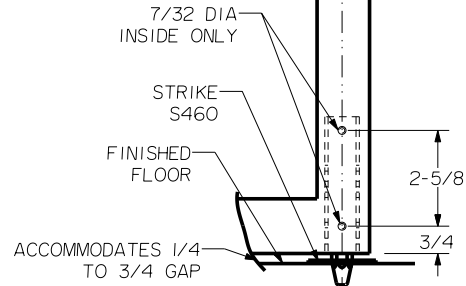
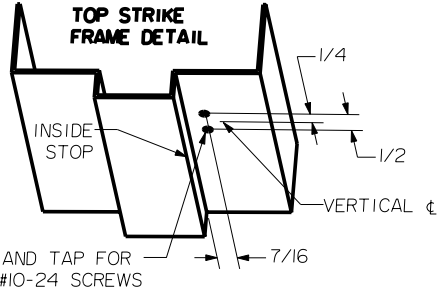


PREPARE THESE HOLES AT DEVICE INSTALLATION

HORIZONTAL \uparrow FOR DEVICE

RHR SHOWN - FOR LHR REVERSE STILE MACHINING

39-15/16 FINISHED FLOOR



LBR DEVICES:
OMIT BOTTOM BOLT MACHINING.

NOTE: "LETTER" AT END OF TRIM MODEL NO. DESIGNATES LEVER STYLE. EXCEPT AS NOTED, LEVER STYLE HAS NO EFFECT ON STILE MACHINING.

Not to scale 1:1. Measurements are for reference only.
Not a drilling template.