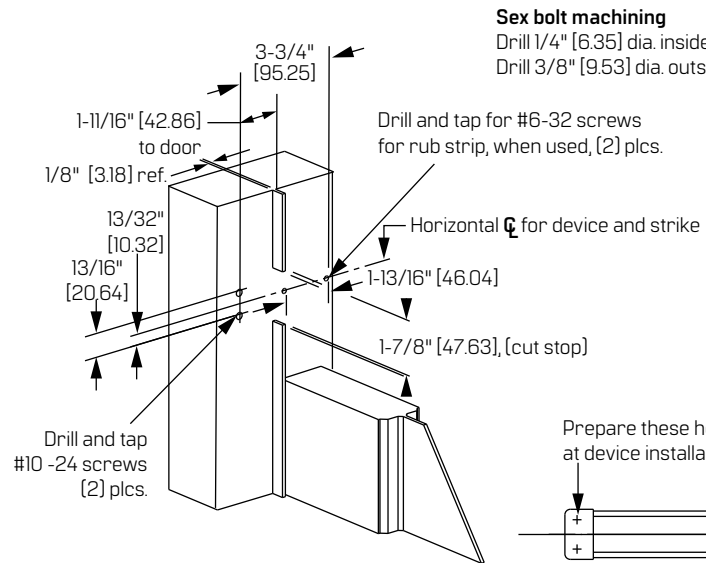


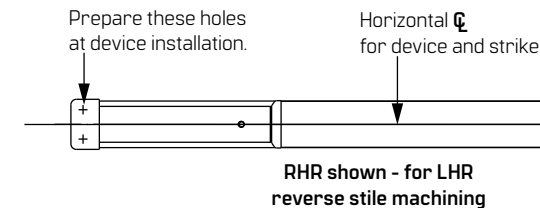
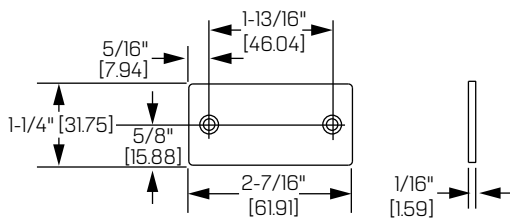
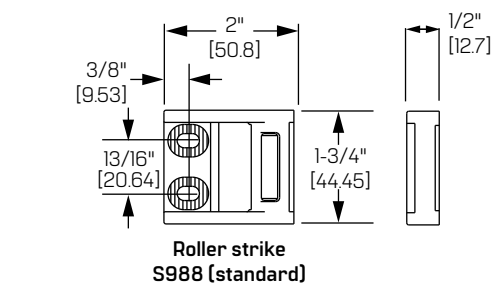
Series: 2100 Rim Device – Trim Series: 2000 – Strike: S988 – Aluminum Door Preparation

For online instructions, assistance or warranty information:
Call 1-800-392-5209 or visit <https://dhwsupport.dormakaba.com/hc/en-us>



NOTE: "LETTER" at end of trim model number designates grip style. Except as noted, grip style has no effect on stile machining.

Devices	Trims	B-hole 1-3/8" [34.93] dia. through door	C-hole through door	D1
2101	2001	No	No	3/8" [9.53] dia. outside 1/4" [6.35] dia. inside
2102	2002	Yes	Yes	No
2103	2003			
E2103	2005	No	No	No
2108				
2110				
2115	2015	No	No	No



Aluminum door and frame with blade or applied stop		
Min. stiles	Device size	Door width
3-1/2" [88.9]	3' - 0" [0.91m]	2' - 6" to 2' - 11" [0.76 m] to [0.89 m]
	4' - 0" [1.22m]	3' - 0" to 3' - 11" [0.91 m] to [1.19 m]
4-1/4" [107.95] or flush door	3' - 0" [0.91m]	2' - 7" to 3' - 0" [0.79 m] to [0.91 m]
	4' - 0" [1.22m]	3' - 1" to 4' - 0" [0.94 m] to [1.22 m]

