

Rim Device 2400 Series x 2900 Trim Aluminum Door

Trim Series: Exit Only, CYL Only, 2901, 2902, 2903

Device Series: 2400

Strike: S988

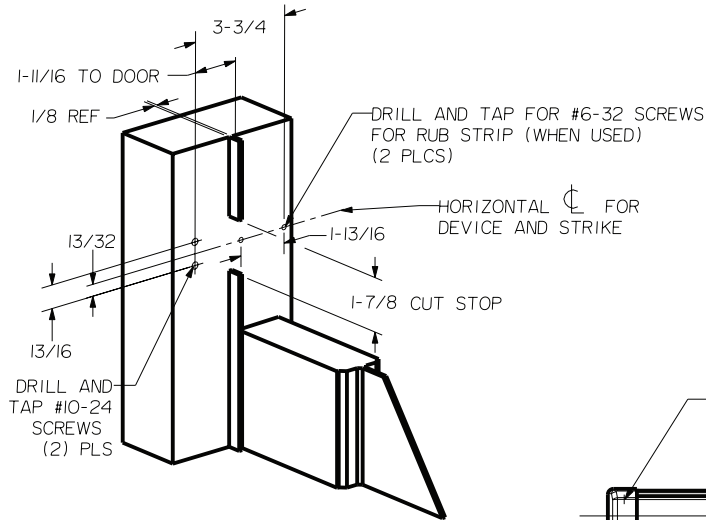


dormakaba Group

For online instructions, assistance or warranty information:
Call 1-800-392-5209 or visit <https://dhwsupport.dormakaba.com/hc/en-us>

SEX BOLT MACHINING

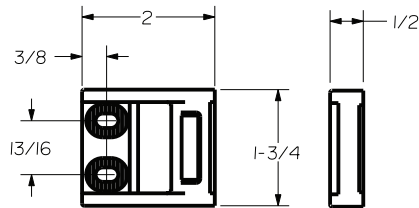
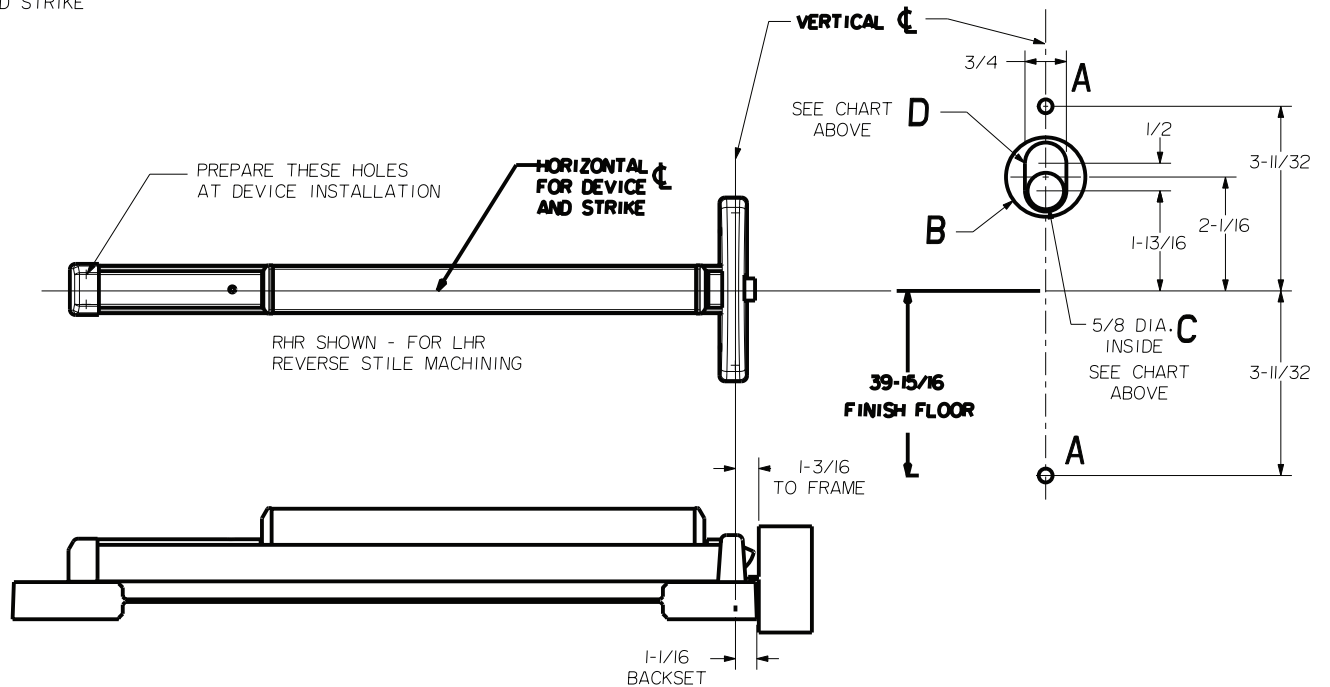
DRILL 1/4 DIA. INSIDE
DRILL 3/8 DIA. OUTSIDE



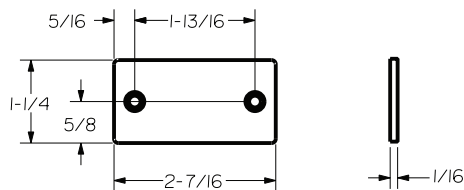
NOTE: "LETTER" AT END OF TRIM MODEL NO. DESIGNATES LEVER STYLE. EXCEPT AS NOTED, LEVER STYLE HAS NO EFFECT ON STILE MACHINING.

HOLE (2) PLS	A	DEVICES	TRIMS	HOLE B	HOLE C	SLOT D
#10-24 TAP INSIDE ONLY		2401	EXIT ONLY	NO	NO	NO
		2403	CYL ONLY	1-3/16 DIA. OUTSIDE		3/4 SLOT INSIDE
1/4 DIA INSIDE 13/32 DIA OUTSIDE		2401	2901	NO	YES	NO
		2402	2902			
		2403	2903	1-7/16 DIA OUTSIDE		

LOCK STILE MACHINING



ROLLER STRIKE S988 STANDARD



RUB STRIP S454 (STANDARD)

ALUMINUM DOOR AND FRAME WITH BLADE OR APPLIED STOP		
MIN. STILE	DEVICE SIZE	DOOR WIDTH
1-3/4"	3'-0"	2'-6" TO 3'-0"
	4'-0"	3'-1" TO 4'-0"