

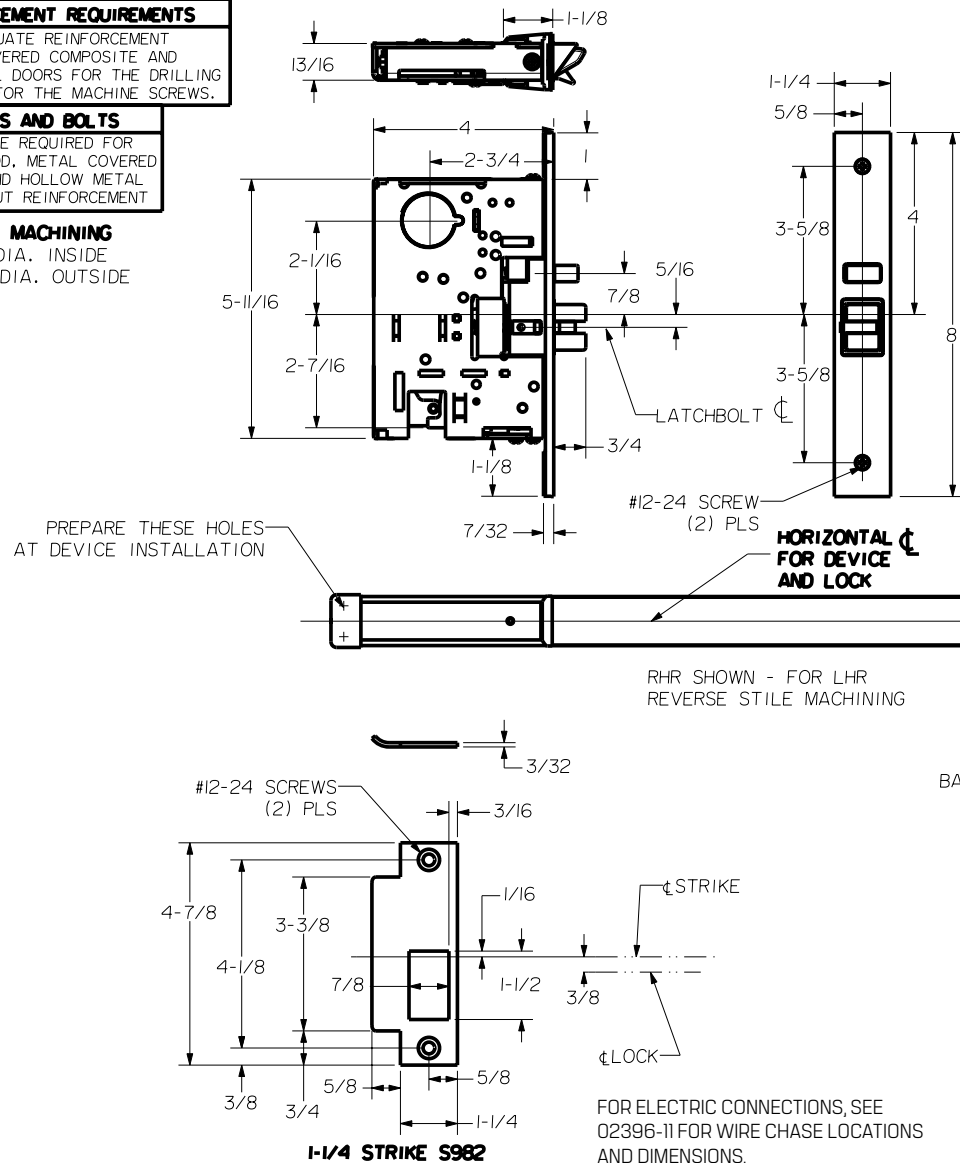
# Installation Specifications: Series 2300, FL2300 Trim Series: 2000

For online instructions, assistance or warranty information:  
Call 1-800-392-5209 or visit <https://dhwsupport.dormakaba.com/hc/en-us>

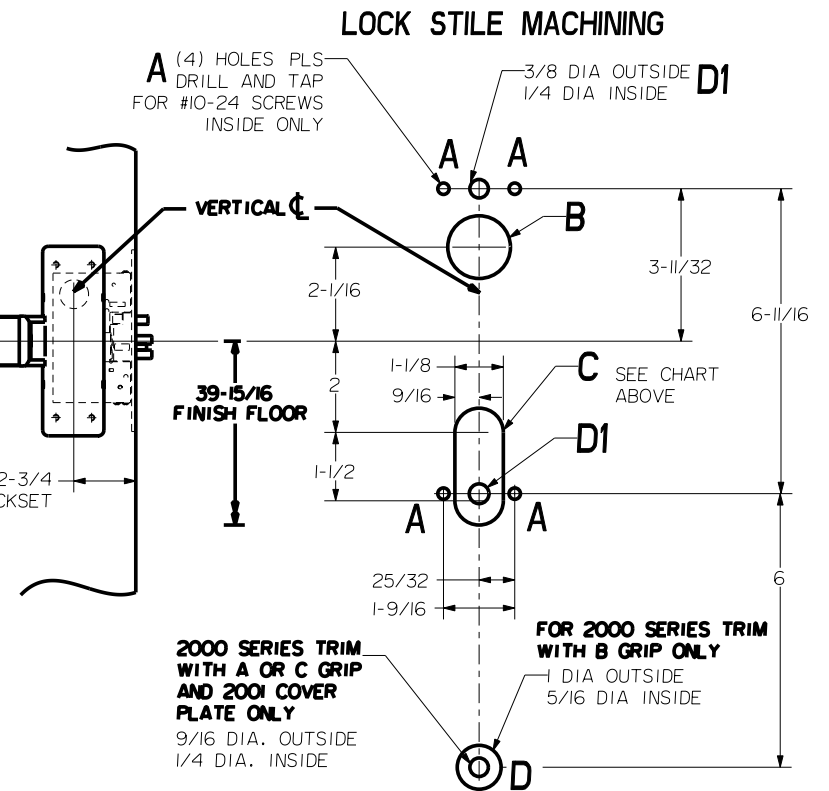
**REINFORCEMENT REQUIREMENTS**  
PROVIDE ADEQUATE REINFORCEMENT TO METAL COVERED COMPOSITE AND HOLLOW METAL DOORS FOR THE DRILLING AND TAPPING FOR THE MACHINE SCREWS.

**SEX NUTS AND BOLTS**  
SEX BOLTS ARE REQUIRED FOR PLASTIC, WOOD, METAL COVERED COMPOSITE AND HOLLOW METAL DOORS WITHOUT REINFORCEMENT

**SEX BOLT MACHINING**  
DRILL 1/4 DIA. INSIDE  
DRILL 3/8 DIA. OUTSIDE



DEVICES	TRIMS	HOLE B 1-3/8 DIA. THRU DOOR	SLOT C	DI
2301.FL2301	2001	NO	INSIDE ONLY	3/8 DIA OUTSIDE
2302.FL2302	2002			1/4 DIA INSIDE
2303.FL2303	2003	YES	THRU DOOR	NO
2305.FL2305	M2005			
2315.FL2315	M2015	NO		



FOR ELECTRIC CONNECTIONS, SEE 02396-11 FOR WIRE CHASE LOCATIONS AND DIMENSIONS.

**S985, S984 OPTIONAL OPEN BACK STRIKES  
SEE TEMPLATE NUMBER HM-S985**

NOTE:  
"LETTER" AT END OF TRIM MODEL NO. DESIGNATES GRIP STYLE. EXCEPT AS NOTED, GRIP STYLE HAS NO EFFECT ON STILE MACHINING.

Not to scale 1:1. Measurements are for reference only.  
Not a drilling template.