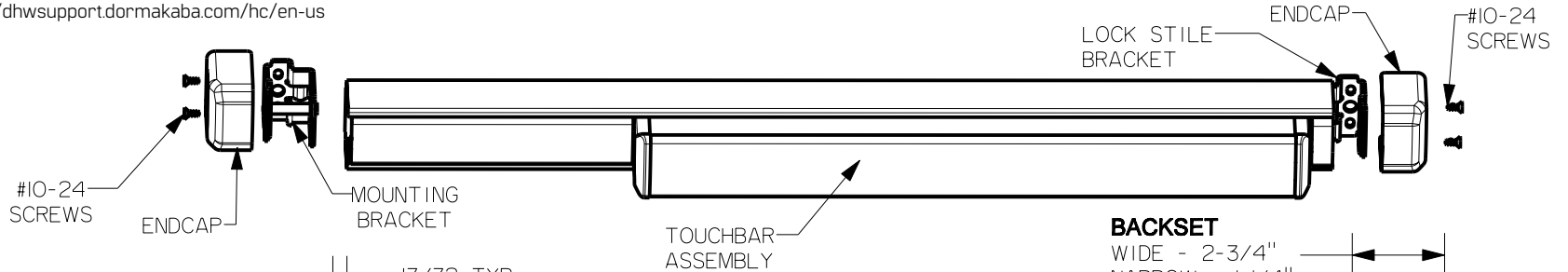


Door Preparation and Installation Instructions

For online instructions, assistance or warranty information:
Call 1-800-392-5209 or visit <https://dhwsupport.dormakaba.com/hc/en-us>

DUMMY TOUCHBAR

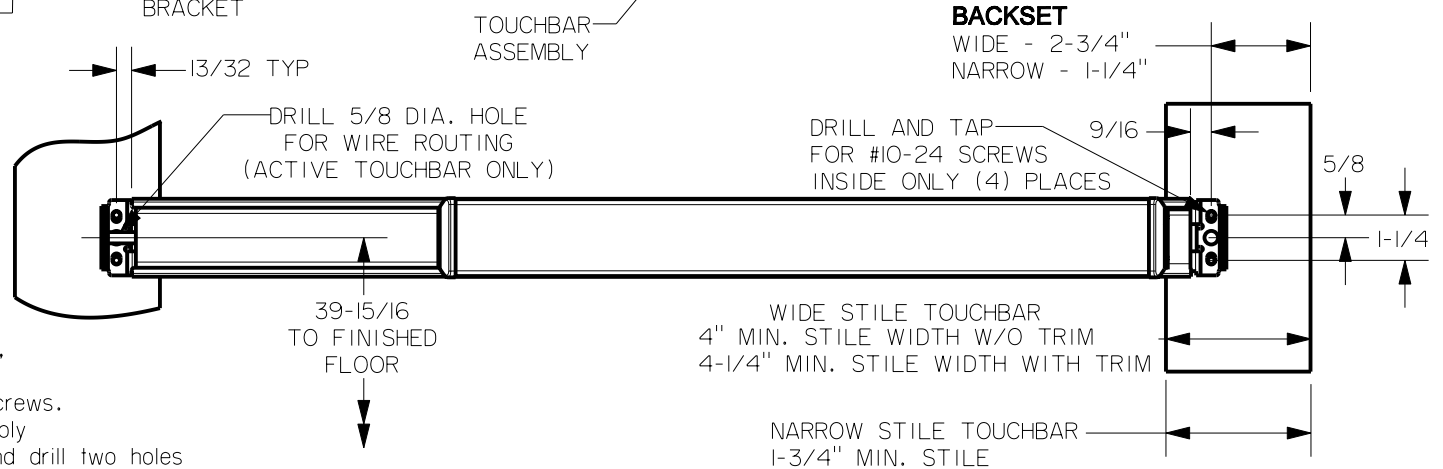


RIGID TOUCHBAR

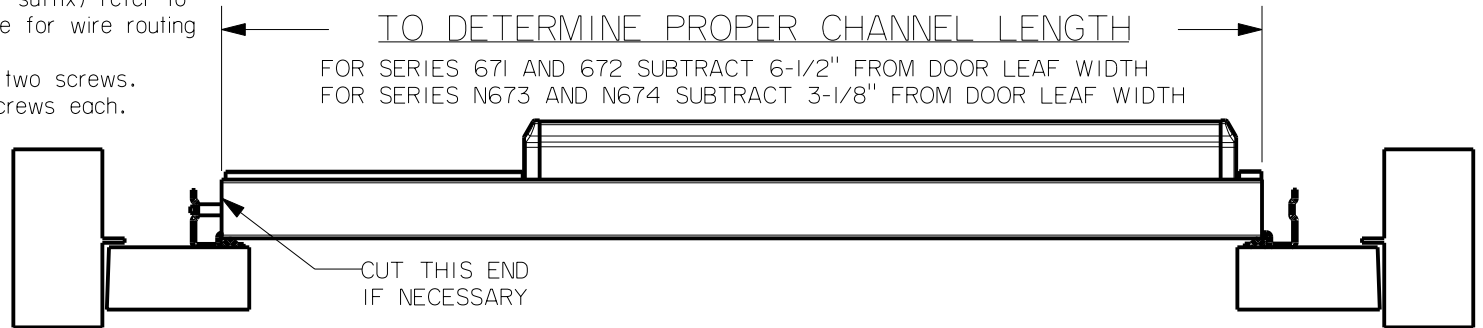
WIDE STILE - 671DR-3 AND 671DR-4
NARROW STILE - N673DR-3 AND N673DR-4

ACTIVE TOUCHBAR

WIDE STILE - 672DA-3 AND 671DA-4
NARROW STILE - N674DA-3 AND N674DA-4

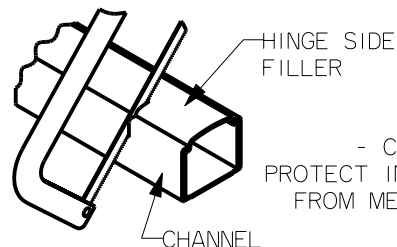


- 1) Mark centers, drill and tap as indicated.
- 2) Determine proper channel length as indicated, cut if needed.
- 3) Mount lock stile bracket to door with two screws.
- 4) Insert mounting bracket into touchbar assembly tight against channel. Level device. Mark and drill two holes for #10 sheet metal screws or #10-24 machine screws.
- 5) For active touchbar (Models with "DA" suffix) refer to O185I-II for wiring details and drill hole for wire routing as noted above.
- 6) Fasten mounting bracket to door with two screws, and attach both end caps with two screws each.



Not to scale !! Measurements are for reference only.
Not a drilling template.

NOTE: IF DEVICE HAS ELECTRICAL OR OTHER OPTIONS SEE INSTRUCTIONS PACKED WITH THAT OPTION.



- CAUTION -
PROTECT INSIDE OF DEVICE FROM METAL SHAVINGS