

Series: Precision 22 – Door Preparation

For online instructions, assistance or warranty information:
Call 1-800-392-5209 or visit <https://dhwsupport.dormakaba.com/hc/en-us>

Reinforcement requirements

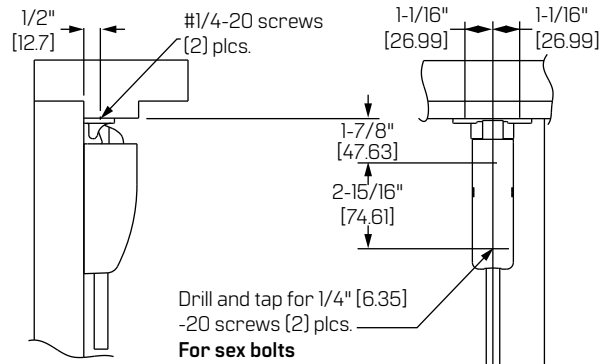
Provide adequate reinforcement to metal-covered composite and hollow metal doors for drilling and tapping for machine screws.

Sex nuts and bolts

Sex bolts are required for plastic, wood, metal-covered composite and hollow metal doors without reinforcement.

Sex bolt machining

Hole "A" (4) plcs. and mounting bracket
Drill 1/4" [6.35] dia. inside.
Drill 3/8" [9.53] dia. outside.



Prepare these holes at device installation (mounting bracket).

Horizontal ϕ for device and lock case

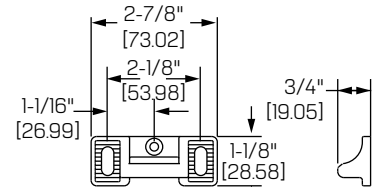
Vertical ϕ

RHR shown - for LHR reverse stile machining

2-3/4" [69.85] or centered on exposed lock stile

39-15/16" [1014.41] finished floor

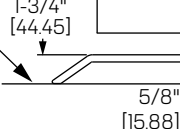
Door edge



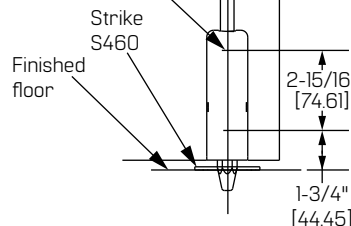
Strike S300 (standard)
Roller strike S301 (optional)

Drill and tap for 1/4" [6.35] -20 screws (2) plcs.
For Sexbolts
9/32" [7.14] dia. inside
3/8" [9.53] dia. outside (HC devices require sexbolts.)

Finished floor



Threshold application

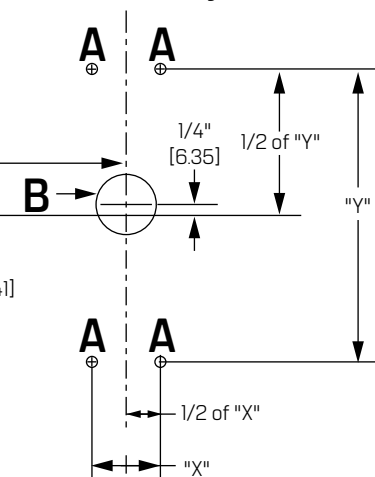


Not to scale. Measurements are for reference only.
Not a drilling template.

A-hole [4] plcs.	Devices	Trims	B-hole
#10-24 tap inside only	22, FL22	Cylinder only	1-3/16" [30.16] dia. outside 1-3/8" [34.93] dia. inside
1/4" [6.35] dia. inside	22, FL22	See trim instructions	1" [25.4] dia. min.

NOTE: This device is compatible with other manufacturers' access control exterior trim. See instructions for mounting trim.

Lock stile machining



"X" dim.	"Y" dim.
1-9/16" [39.69]	6-11/16" [169.86]
Alternate holes	
1-3/8" [34.93]	7" [177.8]

LBR devices:
Omit bottom bolt machining.
Fire bolt req'd for FL devices.
See drawing T93637 for details.